

Spring Promenade

West Drayton • Middlesex • UB7 9GL

PCM: £2,500 PCM



coopers
est 1986

This well presented four bedroom family home is situated in the popular Drayton Garden Village close to Heathrow Airport and within easy reach of West Drayton Train Station and Stockley Business Park.

Accommodation; Four bedrooms (master with luxury en-suite bathroom, Further modern family bathroom, Ground floor w/c, Fully fitted kitchen/diner with appliances, Lounge with doors leading to private garden. Benefits from allocated parking space, central heating, double glazing. FURNISHED

Fantastic location

Close to West Drayton Station

4 bedroom town house

Close to Stockley Business Park

Close to Heathrow Airport

Allocated parking

Well presented

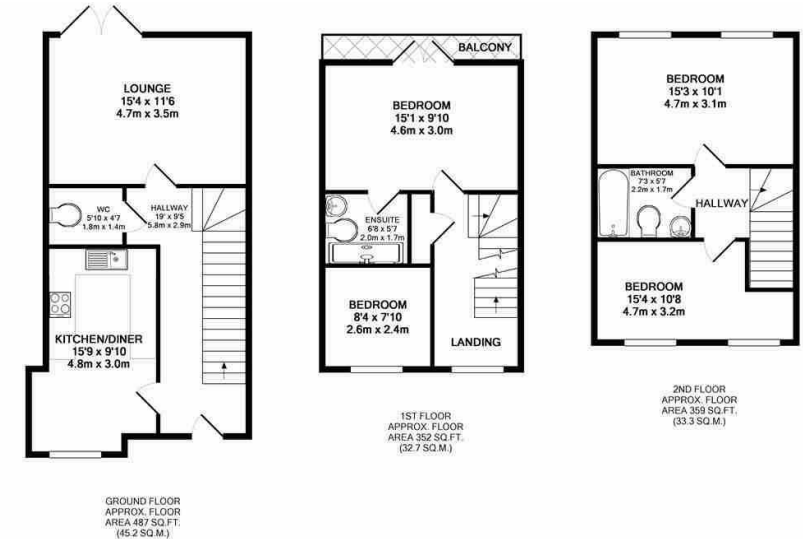
Lovely sized rear garden

Double glazing

Furnished

Available Date

27th August 2026



Whilst every attempt has been made to ensure the accuracy of the floor plan contained here, measurements of doors, windows, rooms and any other items are approximate and no responsibility is taken for any error, omission, or mis-statement. This plan is for illustrative purposes only and should be used as such by any prospective purchaser. The services, systems and appliances shown have not been tested and no guarantee as to their operability or efficiency can be given. Made with Metropix 62015.

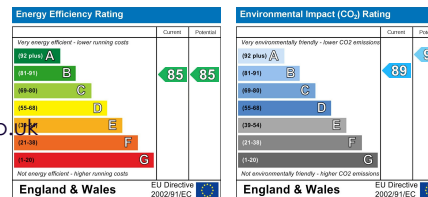


01895 257 566

1 Vine Street, Uxbridge,
Middlesex, UB8 1QE

propertymanagement@coopersresidential.co.uk

CoopersResidential.co.uk



Important Notice: These particulars, whilst believed to be accurate are set out as a general outline only for guidance and do not constitute any part of an offer or contract. Intending purchasers should not rely on them as statements or representation of fact, but must satisfy themselves by inspection or otherwise has the authority to make or give any representation or warranty in respect of the property.

coopers
est 1986