

# QUEEN'S GROVE

SOUTHSEA | HAMPSHIRE | PO5 3HH



## OFFERS IN EXCESS OF £500,000 Freehold

- Spacious End of Terrace Family Home
- Located within a Popular Road, South of Elm Grove
- Three Good Sized Bedrooms
- Modern Bathroom Suite : Downstairs WC
- West Facing Rear Garden with Rear Access
- Allocated Parking : Integral Garage
- Gas Central Heating : Double Glazing Throughout
- Viewing Highly Recommended!







## In Brief

Located in the highly sought-after Queens Grove, this beautifully appointed three-bedroom townhouse offers a perfect blend of style, comfort, and convenience.

Set across three floors, the property features a spacious open-plan kitchen on the ground floor, complete with access to a private west facing rear garden—ideal for entertaining or relaxing.

The first floor presents a bright and welcoming living room, and a generously sized double bedroom. On the top floor, you'll find two further bedrooms, including a master bedroom with built-in wardrobes, and a modern bathroom suite.

With off-road parking, gas central heating, and double glazing throughout, this home is ready to move into.

Situated just a short walk from Southsea's vibrant shops, cafes, and the seafront, it offers an exceptional lifestyle opportunity in one of the area's most desirable locations.

Offers in Excess of £500,000

## KEY FACTS

TENURE: Freehold

EPC RATING: 'TBC'

COUNCIL TAX BAND: 'E'



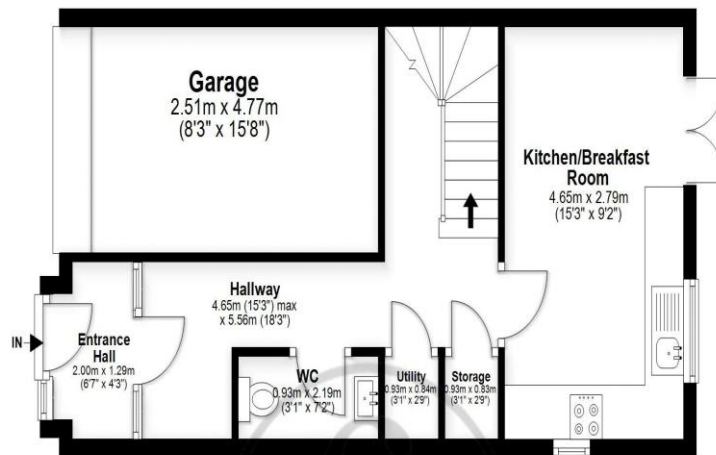


# QUEEN'S GROVE

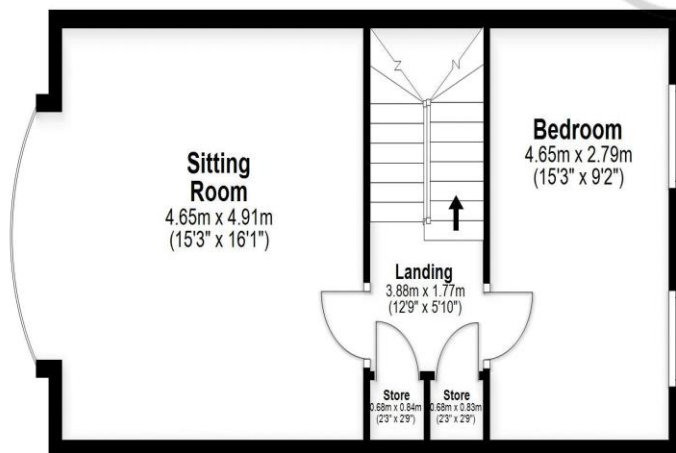
SOUTHSEA | HAMPSHIRE | PO5 3HH



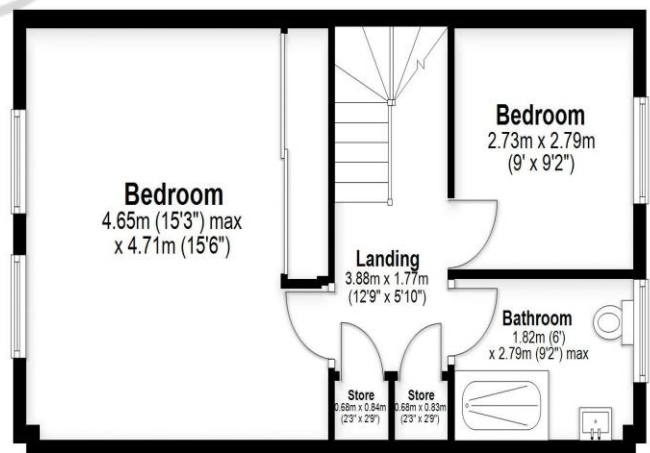
### Ground Floor



### First Floor



### Second Floor



**Southsea**  
Sales & Lettings  
7/9 Stanley Street,  
Southsea, PO5 2DS  
Tel: 023 9281 5221

**Old Portsmouth & Gunwharf Quays**  
Sales & Lettings  
The Seagull, 13 Broad Street,  
Old Portsmouth, PO1 2JD  
Tel: 023 9281 5221

**Drayton & Out of Town**  
Sales & Lettings  
139 Havant Road,  
Drayton, PO6 2AA  
Tel: 023 9221 0101

**London**  
Sales & Lettings  
Mayfair Office, Cashel House,  
15 Thayer Street, W1U 3JT  
Tel: 0870 112 7099

**Southsea**  
Admin Centre  
12 Marmion Road,  
Southsea, PO5 2BA  
Tel: 023 9282 2300

[www.fryandkent.com](http://www.fryandkent.com)