

MATTHEW JAMES

Residential Sales • Lettings • Management



207 Tufnell Park Road, Tufnell Park, N7 0PX

£1,900 Per Calendar Month

A bright one double bedroom converted raised ground floor flat. This immaculate property is just a few minutes walk from Tufnell Park underground station and the areas local shops and restaurants. Benefitting from a well fitted kitchen and bathroom, double glazed wood sash windows and oak flooring throughout, as well as being finished to a high decorative standard. Offered Furnished. Available from 8th August.

Ground Floor Entrance

Exterior steps up to buildings front door, the flat is accessed via a communal hallway.

Hallway

Video entry phone, oak flooring, good sized storage cupboard housing washing machine.

Lounge



A good sized bright room with oak wood flooring and large double glazed wooden sash bay windows to front. Open to...

Kitchen



A fitted kitchen with high gloss white wall and base units with black speckled rolled worktop. Appliances include integrated four ring gas hob and oven/Grill, dishwasher, fridge/ freezer and stainless steel sink with drainer and mixer tap. Finished in large cream floor tiles and black splash back wall tiles.

Double Bedroom



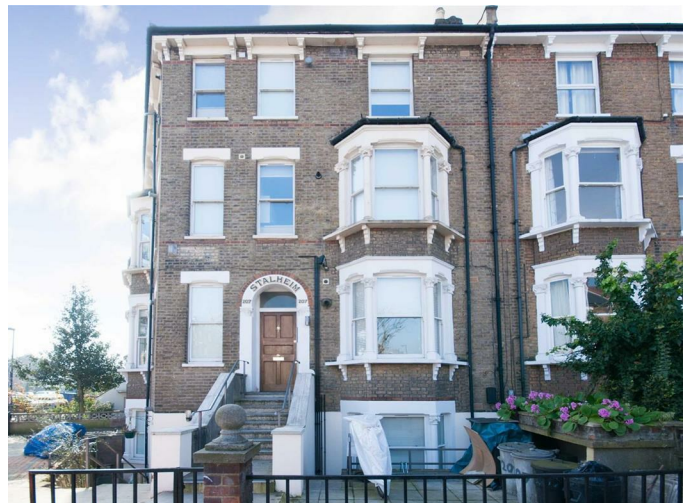
Bright double bedroom with oak wood flooring and double glazed wooden sash window looking out to rear.

Bathroom / W.C.



Modern bathroom with a white suite comprising of a large bath with power shower and shower attachment, wall mounted wash basin with mixer tap and low flush WC. Other features include a heated chrome towel rail and mirrored medicine cabinet. Finished in cream wall and floor tiles.

Front Elevation



Additional Information

Islington Council Tax Band - C

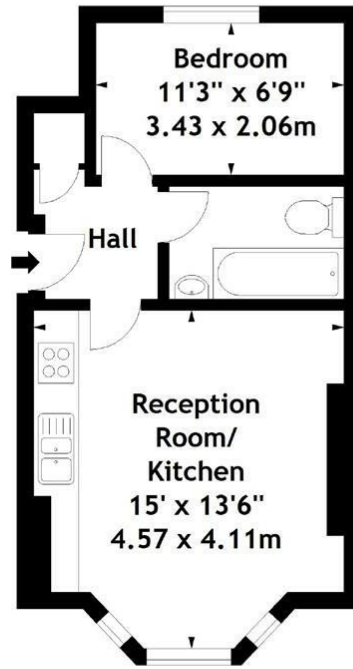
Holding deposit based on asking price - £438

Full deposit based on asking price - £2,190

Furnished

Floor Plan

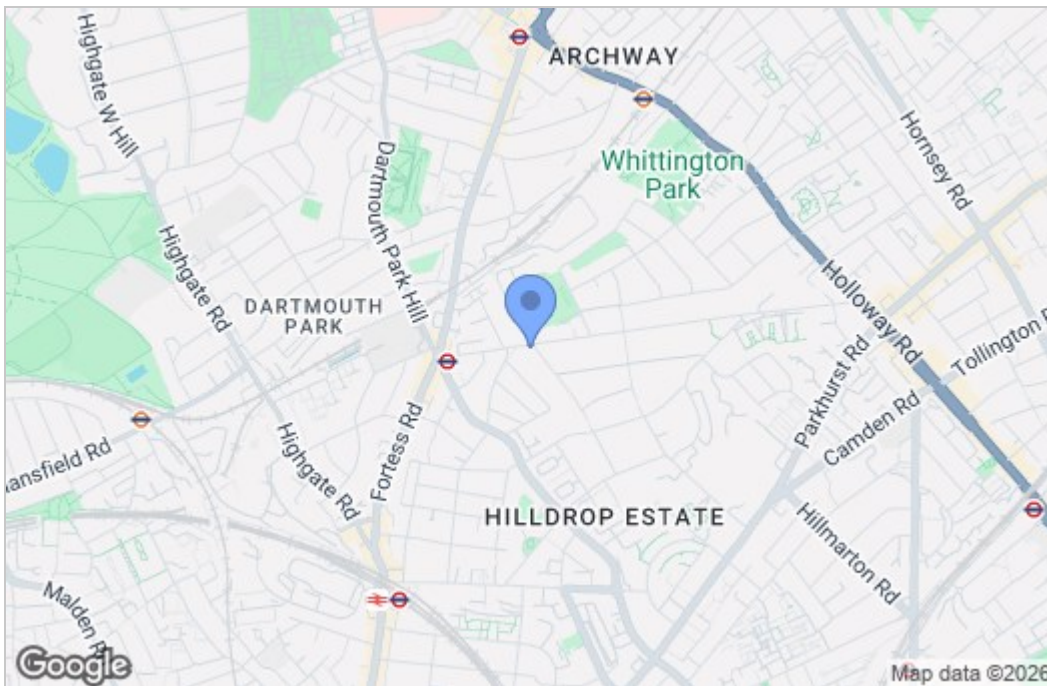
Tufnell Park Road, N7
 Approx. Gross Internal Area
 347 Sq Ft - 32.24 Sq M



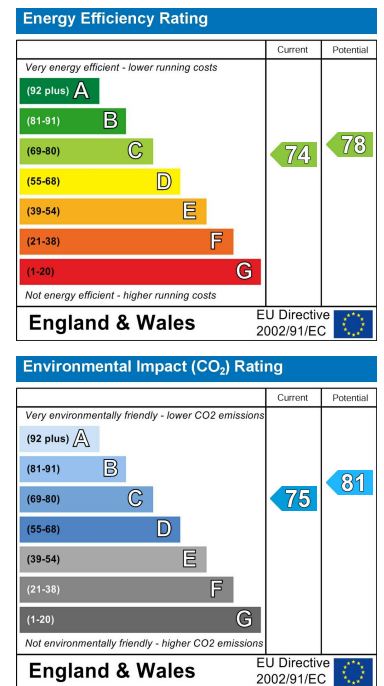
Raised Ground Floor

Measured in accordance with RICS guidelines. Every attempt is made to ensure accuracy, however all measurements are approximate. This floor plan is for illustrative purposes only and is not to scale.
 © Datagraphy Ltd 2014
 Photographs * Floorplans * Virtual Tours
 Tel: 0845 643 4401 www.datagraphy.com

Area Map



Energy Efficiency Graph



These particulars, whilst believed to be accurate are set out as a general outline only for guidance and do not constitute any part of an offer or contract. Intending purchasers should not rely on them as statements of representation of fact, but must satisfy themselves by inspection or otherwise as to their accuracy. No person in this firm's employment has the authority to make or give any representation or warranty in respect of the property.