



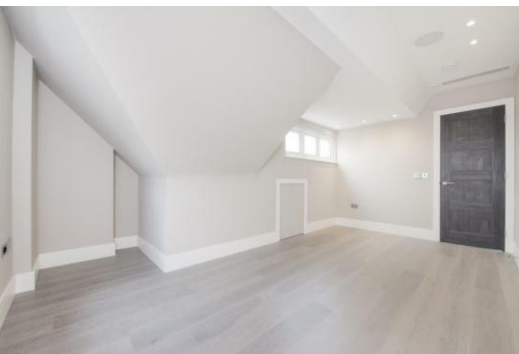
# Fitzjohns Avenue

Hampstead, NW3

£7,999.33 per month  
(£1,846 per week)

A fantastic interior designed and newly refurbished 3/4 double bedroom duplex apartment on the 2nd/3rd floors of this smart period building in the heart of Hampstead ideally located for the fashionable cafes and boutiques. Accommodation comprises reception room, fully kitted eat-in kitchen, master bedroom with built-in storage, en-suite shower room and access to a balcony, 2 further double bedroom suites, 4th bedroom/study, shower room, guest cloakroom and plenty of storage.

**CHESTERTONS**



# Fitzjohns Avenue

## Hampstead, NW3

- A Fantastic Interior Designed Duplex Apartment
- 4 Bedrooms, 4 Bathroom. reception, Eat In Kitchen
- Smart Period Building, Balcony
- Situated in Hampstead, Ideally Located for the Fashionable Cafes and Boutiques



**Minimum Term:** 18 months  
**Deposit Required:** £11,076.00  
**Local Authority:** London Borough Of Camden  
**Council Tax Band:** G  
**EPC Rating:** D  
**Furnished, Part Furnished, Unfurnished**

Energy Efficiency Rating		Current	Potential
Very energy efficient - lower running costs			
(92-100)	A		
(81-91)	B		
(69-80)	C		
(55-68)	D	61	72
(39-54)	E		
(21-38)	F		
(1-20)	G		
Not energy efficient - higher running costs			
England, Scotland & Wales		EU Directive 2002/91/EC	

### *Chestertons Hampstead Lettings*

55-56 Hampstead High Street  
Hampstead  
London  
NW3 1QH  
hampsteadlettingsusers@chestertons.co.uk  
02077941125  
chestertons.co.uk

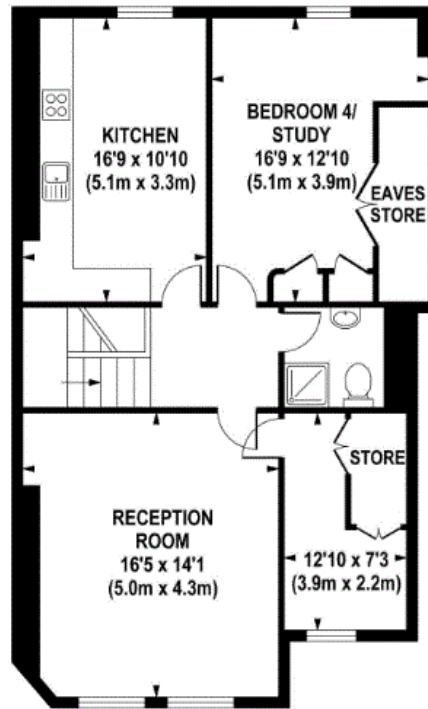
Additional tenant charges apply (fees apply to non-AST tenancies only)  
Tenancy Agreement Fee: £300  
References per Tenant/Guarantor: £60  
Inventory check (approx. £100 – £250 inc. VAT)  
chestertons.co.uk/property-to-rent/applicable-fees

# FITZJOHNS AVENUE, NW3

Approximate Gross Internal Area 1729 sq ft / 160.6 sq m



**SECOND FLOOR  
GROSS INTERNAL  
FLOOR AREA 840 SQ FT**



**THIRD FLOOR  
GROSS INTERNAL  
FLOOR AREA 889 SQ FT**

Although every attempt has been made to ensure accuracy, all measurements are approximate. The floor plan's for illustrative purposes only and not to scale. Measured in accordance to RICS standards. DE-PHOTOGRAPHY.NET

