



Bromar Road, SE5

£350,000

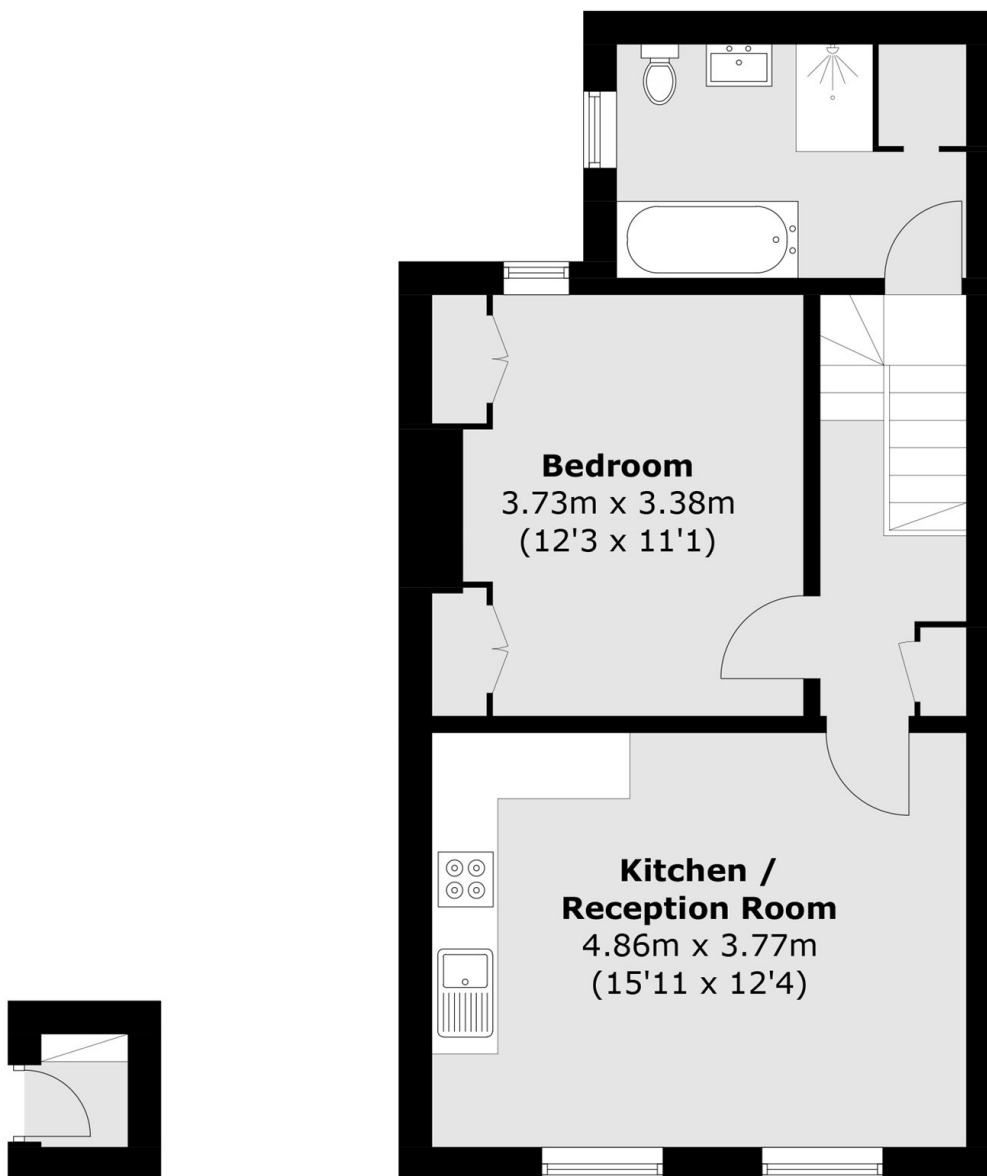
A top floor one double bedroom flat in a Victorian period conversion on the sought after Bromar Road. The flat has an open plan sociable kitchen/reception room and comes with a healthy lease length.

Bromar Road is a popular tree-lined road perfectly located for Bellenden Road with its array of specialist shops, bars and selection of restaurants and many outstanding local schools. Peckham Rye and Denmark Hill Stations are close by offering excellent rail links into the City and beyond.

Features

- One Double Bedroom
- Top Floor
- Period Conversion
- Excellent Location
- Healthy Lease
- Open Plan Kitchen/Reception

Bromar Road,
London, SE5



First Floor

Second Floor

Total area (approx.): 45.8 sq. m (492.9 sq. ft)

Dexters

Peckham Rye
2 Barry Parade
Barry Road
London
Sales
020 8742 4146

Energy Rating: D. We aim to make our particulars both accurate and reliable. However they are not guaranteed; nor do they form part of an offer or contract. If you require clarification on any points then please contact us, especially if you're traveling some distance to view. Please note that appliances and heating systems have not been tested and therefore no warranties can be given as to their good working order.

RICS | Regulated
Estate Agent
and Letting Agent

[dexters.co.uk](https://www.dexters.co.uk)