



Retail Shop & Apartment Muker, Swaledale, DL11 6QG  
Offers over £450,000



# Retail Shop & Apartment Muker, Swaledale, DL11 6QG

FABULOUS & FLEXIBLE 185sqm (1,991sqft) LIVE-WORK SPACE, in the most sought-after of Swaledale's villages - a true tourist destination. TURN YOUR DREAMS INTO REALITY - A SUPERB OPPORTUNITY suitable for an Owner-occupier, an Investor, or a SIPP purchase (Self-Invested Personal Pension). No Previous Experience Needed & For Sale with NO ONWARD CHAIN.

Currently: 3 sizeable CRAFT SHOP, RETAIL & GALLERY AREAS, Catering KITCHEN & WASHROOM/WC; Huge 7.83m x 5.65m (25'8" x 18'6") vaulted main LIVING AREA (or extra STUDIO etc space) with multi-fuel stove, 2 double BEDROOMS & SHOWER ROOM. Landscaped GARDENS with fine views & outside STORES - Highly Recommended.

Currently: 3 sizeable CRAFT SHOP, RETAIL & GALLERY AREAS, Catering KITCHEN & WASHROOM/WC; Huge 7.83m x 5.65m (25'8" x 18'6") vaulted main LIVING AREA (or extra STUDIO etc space) with multi-fuel stove, 2 double BEDROOMS & SHOWER ROOM. Landscaped GARDENS with fine views & outside STORES - Highly Recommended.

## NOTES (1)

(1) It's been a successful business for over 40 years, with 9 years under the current owners who have expanded the business.

There is scope to further increase turnover by adding e-commerce to the website & exploiting the café side.

(2) There is character everywhere (The Old School dates from the 17th Century) & the property has been sympathetically modernised by the current owners.

(3) Current Rateable Value (1st of April 2023 to present) is £10,250, which qualifies for 100% Small Business Rate Relief - if you don't have other rateable properties. No RATES PAYABLE.

**Stone flagged RECEPTION AREA 4.29m x 1.79m (14'0" x 5'10")**

**Main CRAFT SHOP & RETAIL AREA 7.73m x 5.61m (25'4" x 18'4")**

**RETAIL/GALLERY AREA 5.46m av x 4.29m (17'10" av x 14'0")**

**COFFEE AREA/GALLERY AREA 3.78m av x 3.89m (12'4" av x 12'9")**

Extra retail space & previously used as café space.

**Catering KITCHEN 3.66m x 1.95m min (12'0" x 6'4" min)**

Non-slip commercial flooring & hygienic wall cladding, stainless steel unit & sink. Hot-water boiler.

**WASHROOM/WC**

Washbasin & separate WC.

**FIRST FLOOR**

Accessed via external stone stairs.

**Main Open-Plan LIVING AREA 7.83m max x 5.65m (25'8" max x 18'6")**

A fabulous truss-vaulted room with multi-fuel stove & kitchen area.

**SHOWER ROOM 2.14m x 2.06m (7'0" x 6'9")**

(Included in above measurements) Power-shower, washbasin & WC. Airing cupboard with hot-water cylinder.

**DRESSING AREA 2.81m x 1.62m (9'2" x 5'3")**

Currently used an OFFICE.

**BEDROOM 1. 4.34m x 4.27m (14'2" x 14'0")**

Including built-in wardrobes & dresser.

**EN SUITE**

Washbasin & WC.

**BEDROOM 2. 2.83m x 2.55m (9'3" x 8'4")**

**OUTSIDE REAR**

Beautifully landscaped walled gardens with great views to the fells, & a large decked area. Side access to front. UTILITY/STORE (1.90m x 1.22m/6'2" x 4'0") with plumbing for washing machine & GARDEN STORE (2.71m x 2.14m av/8'10" x 7'0").

**NOTES (2)**

(1) Freehold

(2) Mains water, electricity & drainage.

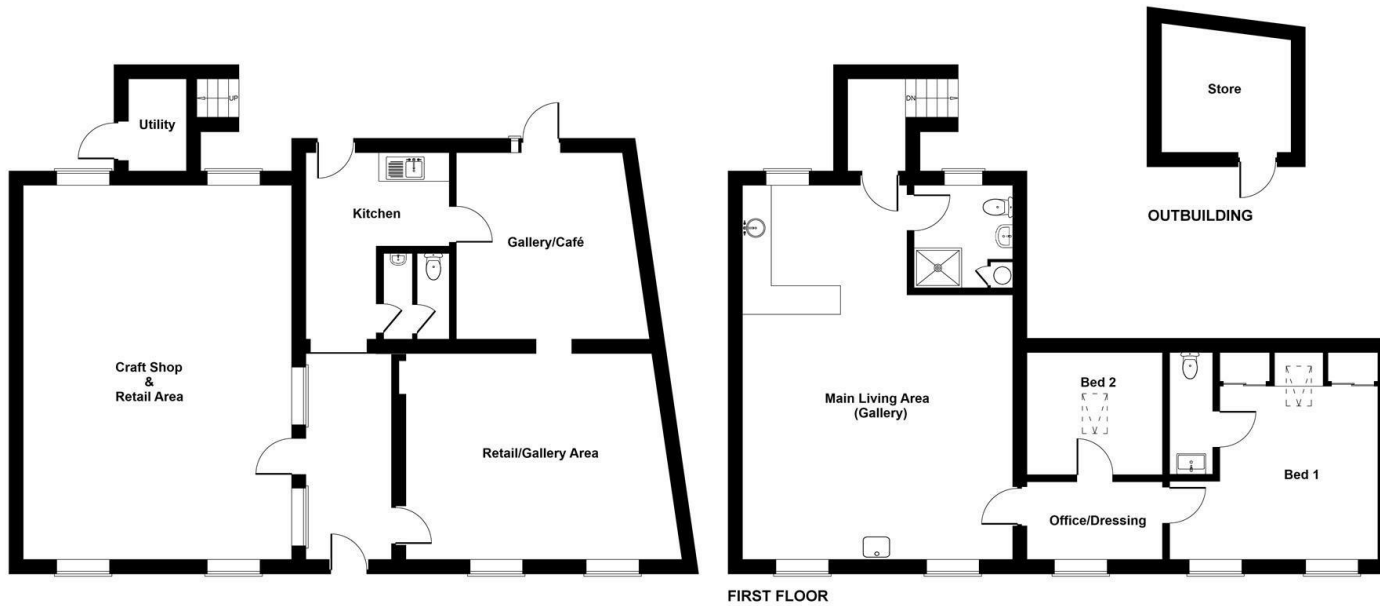
(3) Rateable Value - See above., Council Tax on accommodation: B

(4) EPCs: TBC

(5) OPENING TIMES: The business opens 7 days a week throughout peak season (April - October), & 3-4 days a week in winter months: currently closed after the New Year & re-opened in the Spring.



**OFFERS OVER £450,000**



SKETCH PLAN FOR ILLUSTRATIVE PURPOSES ONLY  
 All measurements walls, doors, windows, fittings and appliances, their sizes and locations, are approximate only. They cannot be regarded as being a representation by the seller, nor their agent.  
 Produced by Potterplans Ltd. 2026

### Energy Efficiency Rating

	Current	Potential
<i>Very energy efficient - lower running costs</i>		
(92 plus) <b>A</b>		
(81-91) <b>B</b>		
(69-80) <b>C</b>		
(55-68) <b>D</b>		
(39-54) <b>E</b>		
(21-38) <b>F</b>		
(1-20) <b>G</b>		
<i>Not energy efficient - higher running costs</i>		

**England & Wales** EU Directive 2002/91/EC

### Environmental Impact (CO<sub>2</sub>) Rating

	Current	Potential
<i>Very environmentally friendly - lower CO<sub>2</sub> emissions</i>		
(92 plus) <b>A</b>		
(81-91) <b>B</b>		
(69-80) <b>C</b>		
(55-68) <b>D</b>		
(39-54) <b>E</b>		
(21-38) <b>F</b>		
(1-20) <b>G</b>		
<i>Not environmentally friendly - higher CO<sub>2</sub> emissions</i>		

**England & Wales** EU Directive 2002/91/EC

