



£850,000 Freehold

MEADVALE ROAD, EALING, W5 1NR





A DELIGHTFUL THREE-BEDROOM END OF TERRACE HOUSE ON THE EVER-POPULAR BRENTHAM GARDEN ESTATE.

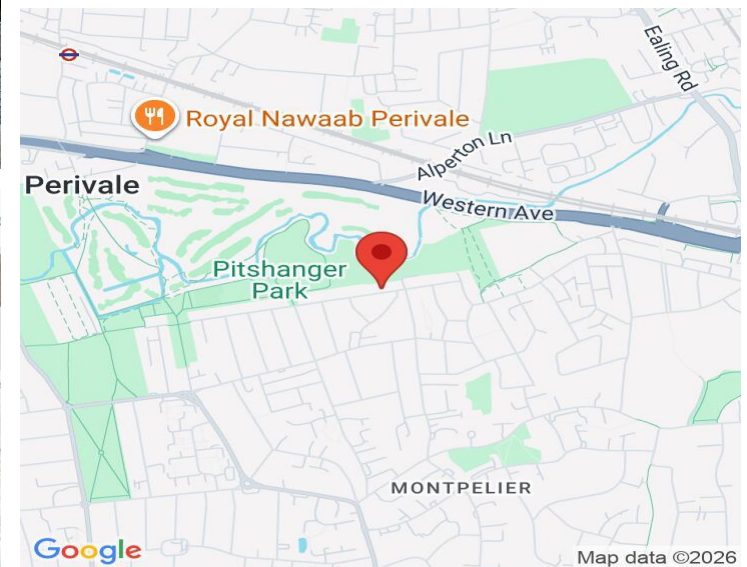
Well placed in the heart of the much-sought after Brentham Garden Estate - one of Ealing's most attractive and important conservation areas. The houses built in a distinctive architectural style. Meadvale Road is a tree lined avenue just a short stroll to the award-winning Pitshanger Lane with its varied shops, restaurants and local services.

The house backs onto Brentham Sports Club with great views overlooking the sports facilities. Nearby are the vast open spaces of Pitshanger and Cleveland Parks and regular bus services to Ealing Broadway Town Centre and Station - enjoying all the benefits of the Central, District and Elizabeth Lines. Conveniently placed for several local private and state schools.

This much-loved family house has been in the same ownership for many years and retains a wealth of original features and charm. It now presents an opportunity to modernise and extend - subject to the usual planning consents. The accommodation consists of: Two reception rooms. Fitted kitchen. Three bedrooms. Family shower room and separate WC. Benefiting from well stocked and mature front and rear gardens. No forward chain.

COUNCIL TAX BAND: F

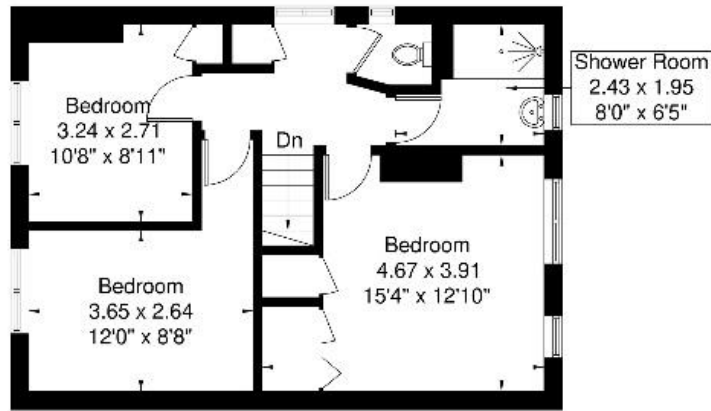
EPC Rating: E



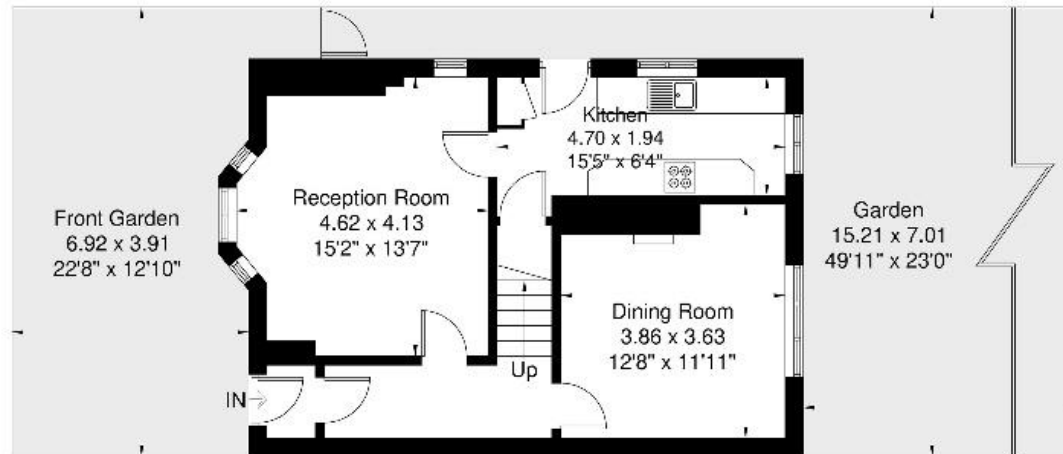
 www.sintonandrews.com
020 8566 1990

Meadvale Road

Approximate Gross Internal Area = 105.1 sq m / 1131 sq ft



First Floor
52.4 sq m / 564 sq ft



Ground Floor
52.7 sq m / 567 sq ft

Although every attempt has been made to ensure accuracy, all measurements are approximate. The floorplan is for illustrative purposes only and not to scale.
© www.perspective.co.uk

020 8566 1990

8 Spring Bridge Road, Ealing, London W5 2AA

SINTONANDREWS.COM

