

A photograph of a modern, two-story house with a light-colored exterior and a dark brown tiled roof. The house features a large glass extension on the ground floor, revealing a dining area with yellow chairs and a kitchen. A paved patio area with outdoor furniture and a closed umbrella is adjacent to the extension. The house is set on a green lawn, and a wooden fence runs along the back. In the background, a windmill is visible among trees. The sky is blue with some clouds. Red leaves are visible in the top left corner, and green leaves are in the top right corner.

# FERMERS

ASKING PRICE

**£1,000,000**

**Windmill Close**

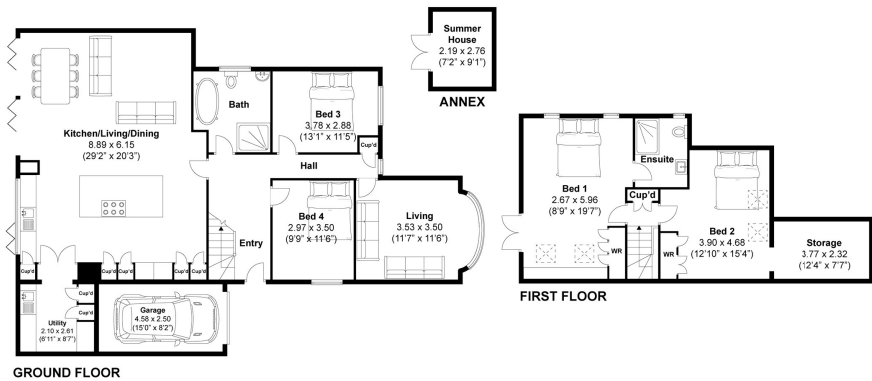
Hove, BN3 7LJ



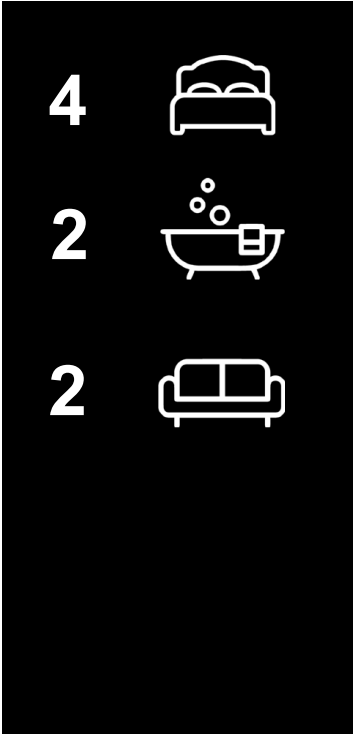
EPC RATING: D COUNCIL TAX BAND: D

Windmill Close, Hove

Approximately 191.5 sqm (2061 sqft)



**Disclaimer:**  
The measurements are approximate and are for illustration purposes only.  
The dimensions are measured internally and in metres and feet. We do not take any responsibility for errors and/or omissions.  
If you require further verification please discuss with the buyer/owner of the property.



Energy Efficiency Rating		
	Current	Potential
Very energy efficient - lower running costs		
(92 plus) <b>A</b>		
(81-91) <b>B</b>		
(69-80) <b>C</b>		80
(55-68) <b>D</b>	60	
(39-54) <b>E</b>		
(21-38) <b>F</b>		
(1-20) <b>G</b>		
Not energy efficient - higher running costs		
England & Wales	EU Directive 2002/91/EC	



Agents Note: Whilst every care has been taken to prepare these particulars, they are for guidance purposes only. All measurements are approximate and are for general guidance purposes only and whilst every care has been taken to ensure their accuracy, they should not be relied upon and potential buyers/tenants are advised to recheck the measurements

**FERMERS**

**OFFICE ADDRESS**  
67 Queen Victoria Avenue  
Hove  
East Sussex  
BN3 6XA

**OFFICE DETAILS**  
01273 541 177  
sales@fermers.co.uk  
www.Fermers.co.uk