



16 Galley View, Ansley

Nuneaton

Offers in Region of £320,000



**SHELDON
BOSLEY
KNIGHT**

LAND AND
PROPERTY
PROFESSIONALS

16 Galley View

Ansley, Nuneaton

Sheldon Bosley Knight are delighted to present this beautifully redecorated three double bedroom modern family home in the highly sought-after village of Ansley. Ideal for families, first-time buyers, or investors, the property features a brand-new kitchen and stylish interiors throughout.

The welcoming hallway leads to a convenient downstairs WC and a bright lounge with an attractive gas feature fireplace. To the rear, the contemporary kitchen/dining area comes complete with integrated appliances.

Upstairs offers three generous double bedrooms, including a principal bedroom with en-suite shower room. Bedrooms two and three benefit from fitted wardrobes, and the family bathroom is finished with a modern white suite.

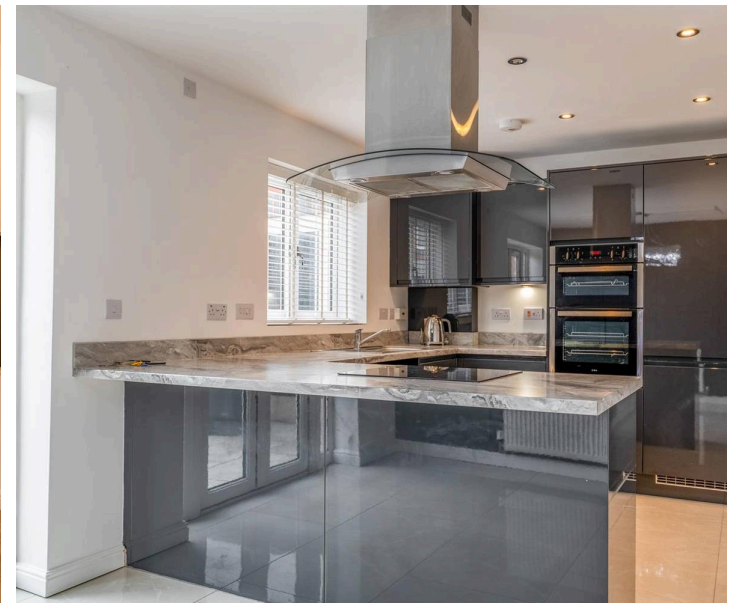
Outside, the low-maintenance rear garden features a patio, lawn and shrub borders. To the front, there is a garage with private driveway providing off-road parking, along with an attractive lawned frontage enhancing kerb appeal.

Homes of this quality in Ansley are rarely available. Contact our Nuneaton team today to arrange your viewing.

Council Tax band: D

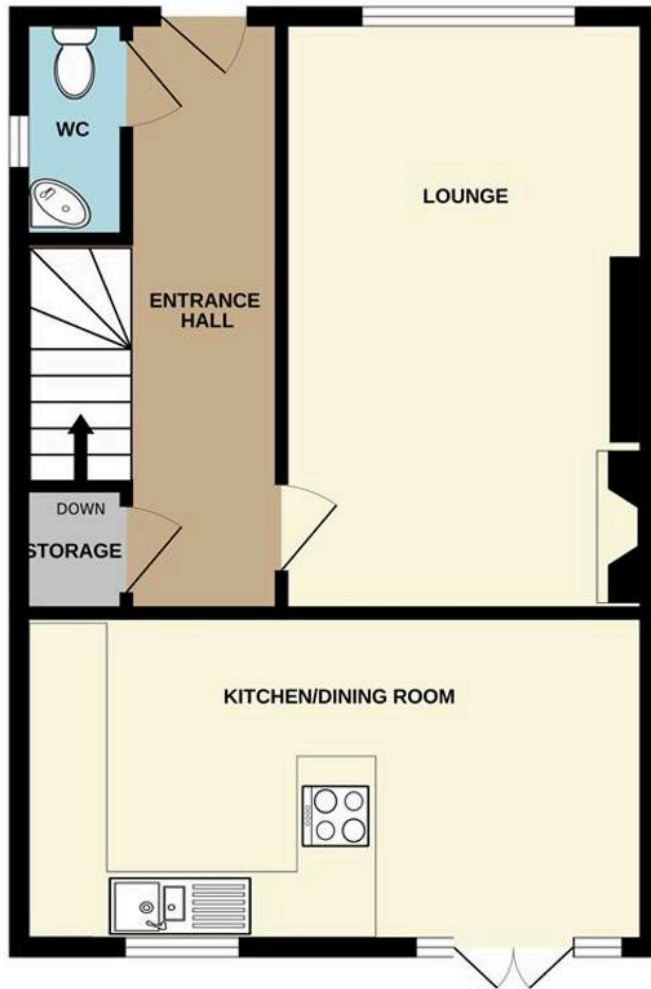
Tenure: Freehold

- Wonderful detached 3 Bedroom family home
- NO CHAIN
- Popular village location
- Fitted kitchen with appliances
- Lounge with gas fire and media wall

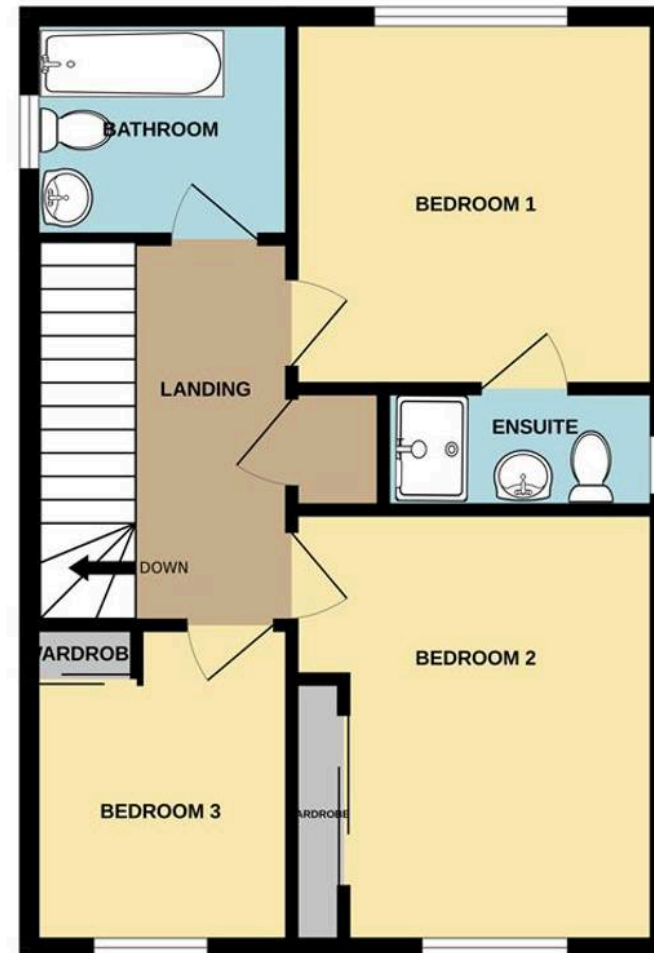




GROUND FLOOR



1ST FLOOR





Sheldon Bosley Knight Nuneaton

Sheldon Bosley Knight, 39 Newdegate Street, Nuneaton – CV11 4ER

02476374949 • nuneaton@sheldonbosleyknight.co.uk • www.sheldonbosleyknight.co.uk/