



Ramsden View Road , Wickford, SS12 0LD Asking Price £350,000

*** PLANNING APPROVED *** READY TO BUILD ***

An exceptional opportunity to acquire a planning-approved residential building plot, offered plot only, with full planning permission granted for the construction of a high-quality three-bedroom detached bungalow.

This attractive and well-positioned plot provides a rare chance for self-builders, downsizers or developers to deliver a modern single-storey home without the delays and uncertainty associated with securing planning consent. The approved scheme offers a carefully considered layout designed to suit contemporary living while retaining broad market appeal.

The planning permission allows for the construction of a spacious three-bedroom detached bungalow, arranged over a single level and extending to approximately 153 sq m (where applicable). The design focuses on practicality, accessibility and generous internal proportions.

-The approved accommodation comprises:

-A large open-plan kitchen, dining and living area, designed as the central hub of the home

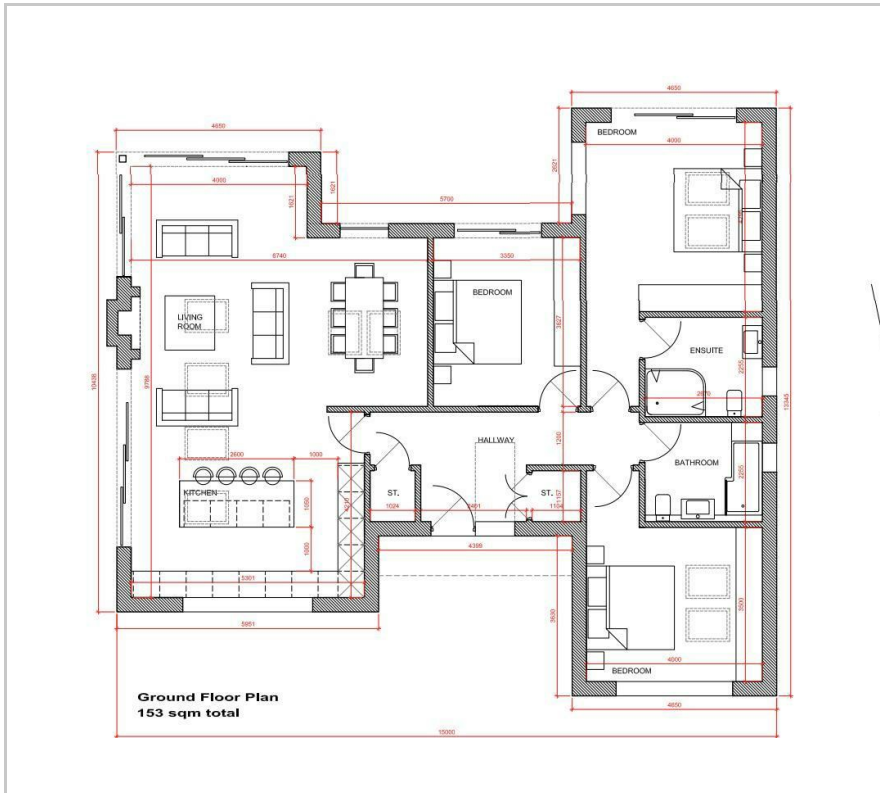
- PLANNING APPROVED FOR A 3 BEDROOM BUNGALOW
- BUILDING PLOT
- DETACHED FAMILY HOME
- ENSUITE TO MASTER
- IDEA FOR SELF BUILD
- THREE BEDROOM
- OPEN PLAN LIVING
- OVER LOOKING FIELDS
- SEMI RURAL LOCATION
- BASILDON PLANNING FOR FURTHER INFORMATION - 25/01056/FULL

Viewing

Please contact our Sales Office on 01268 730707 if you wish to arrange a viewing appointment for this property or require further information.



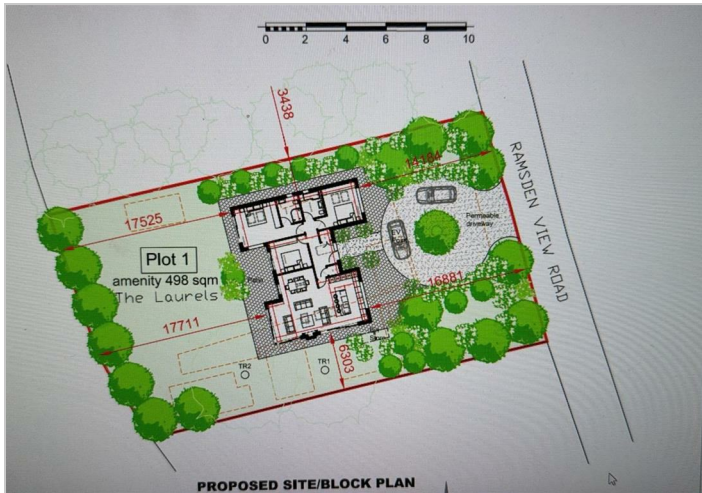
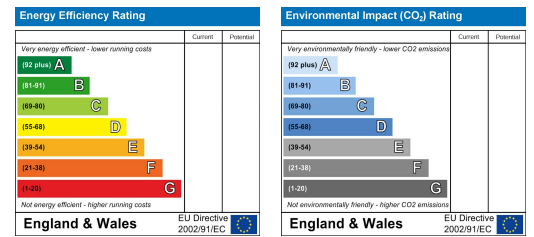
Floor Plan



Area Map



Energy Efficiency Graph



These particulars, whilst believed to be accurate are set out as a general outline only for guidance and do not constitute any part of an offer or contract. Intending purchasers should not rely on them as statements of representation of fact, but must satisfy themselves by inspection or otherwise as to their accuracy. No person in this firm's employment has the authority to make or give any representation or warranty in respect of the property.

2-4 Runwell Road, Wickford, Essex, SS11 7AB

Tel: 01268 730707 Email: info@cowlingandpayne.co.uk <https://www.cowlingandpayne.co.uk>