

## 9 Mere Hall

Warrington Road, Mere

A charming period house with well designed accommodation over four levels, situated in a lovely rural location on a prestigious and secure country house development of just 11 properties, close to the Mere Golf resort, with superb views over lovely communal gardens and parkland.

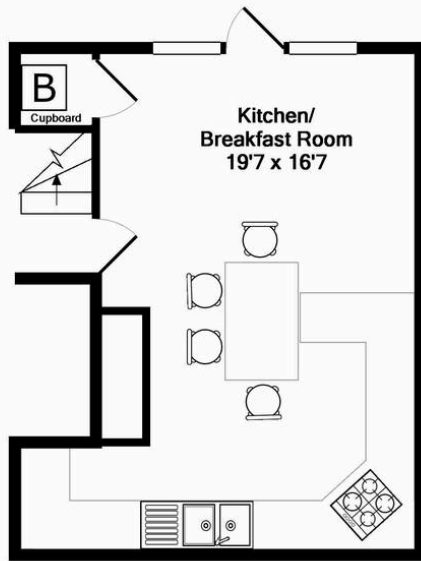
Council Tax band: G

Tenure: Share of Freehold

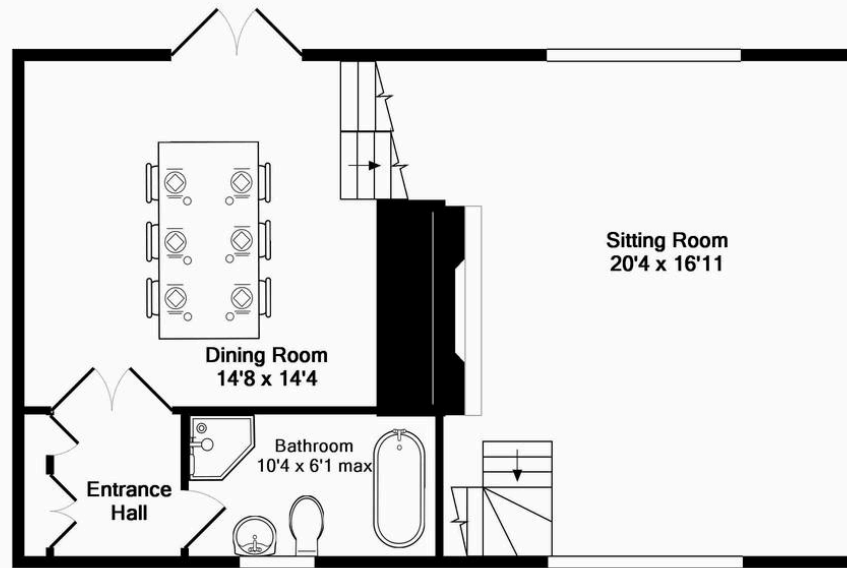
EPC Energy Efficiency Rating: E

- Prestigious small country house development
- Three bedrooms, three bathrooms, three reception rooms
- Superb communal grounds and parkland views
- Fabulous rural location close to The Mere Country club
- Private and communal parking, garage and private terraces

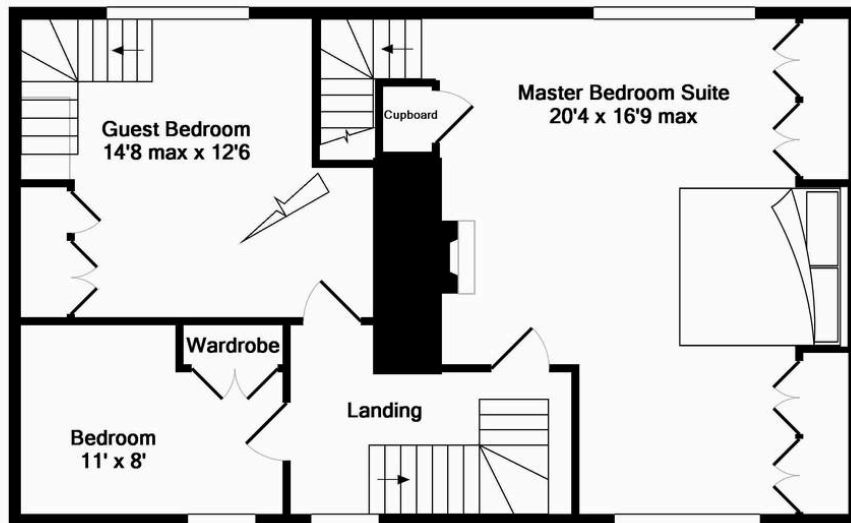




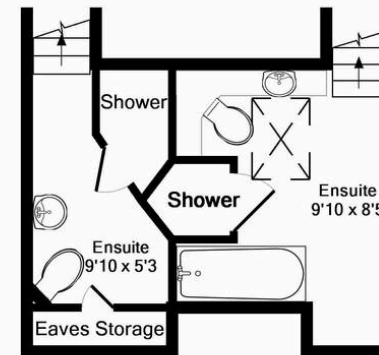
Lower Ground Floor  
 Approx. Floor  
 Area 29.2 Sq.M.  
 (315 Sq.Ft.)



Ground Floor  
 Approx. Floor  
 Area 62.9 Sq.M.  
 (677 Sq.Ft.)



1st Floor  
 Approx. Floor  
 Area 62.9 Sq.M.  
 (677 Sq.Ft.)



2nd Floor  
 Approx. Floor  
 Area 16.2 Sq.M.  
 (174 Sq.Ft.)

Total Approx. Floor Area 171.2 Sq.M. (1843 Sq.Ft.)  
 Made with Metropix ©2010



## Stuart Rushton & Company

Stuart Rushton & Co, 35 King Street – WA16 6DW

01565 757000

[enquiries@srushton.co.uk](mailto:enquiries@srushton.co.uk)

[www.srushton.co.uk](http://www.srushton.co.uk)



We are not authorised to make or give any representations or warranties in relation to the property either here or elsewhere. We assume no responsibility for any statement that may be made in these particulars, and they do not form part of any offer or contract and must not be relied upon as statements or representation of fact. Any areas, measurements or distances are approximate. The text, photographs and plans are for guidance only. Importantly, it should not be assumed that the property has all necessary planning, building regulations or other consents and we have not tested any services, equipment or facilities. Purchasers must satisfy themselves by inspection or otherwise.