



Courtlands, TW10

£2,350 Per calendar month

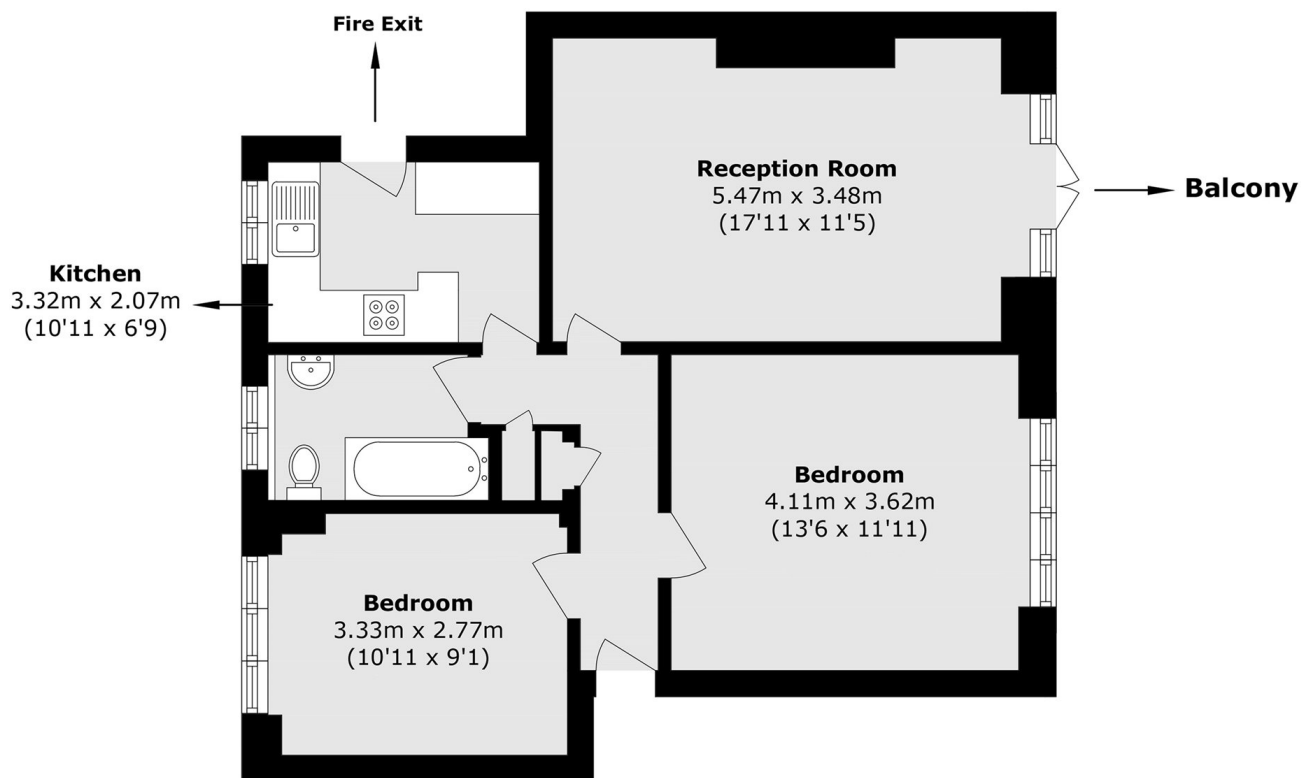
Newly decorated two bedroom bedroom in the popular Courtlands Development. The apartment is in good condition throughout and comes with two double bedrooms, separate kitchen, living room and family bathroom. The property also benefits from communal gardens, parking permit, balcony and heating and hot water included in the rent.

Courtlands is an extremely popular development moments from a gate to Richmond Park, North Sheen mainline station and half a mile to Richmond town centre /mainline station.

Features

- Courtlands Development
- Communal Gardens
- Parking Permit
- Heating and Hot Water included
- Balcony
- Newly Decorated

Courtlands, Richmond, TW10



Total area (approx.): 61.1 sq. m (657.6 sq. ft)