



**POOLE
TOWNSEND**

Lindal, Ulverston

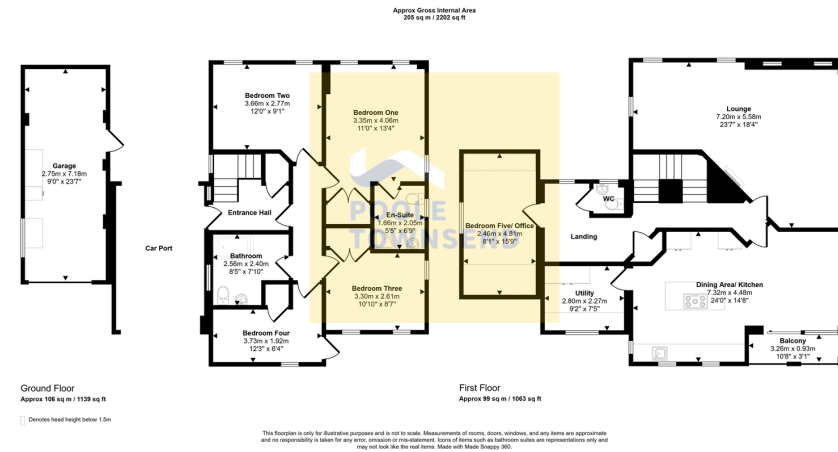
£545,000

🛏 5 🚿 2 🚗 2

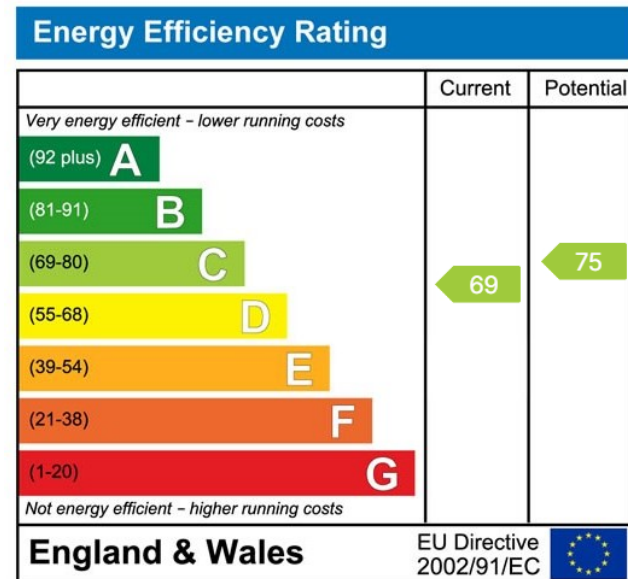


- Fabulous Five Bedroom Family Home
- Beautiful village location
- Viewing is highly recommended
- Garage and Drive
- Spacious and well presented throughout
- Spacious Lounge With Large Separate Kitchen/Diner
- Extensive gardens and Separate Woodland
- Freehold and Council Tax Band E
- Office Room or Bedroom
- Separate Woodland Area throughout





Nestled in a desirable location, this beautifully presented detached home offers spacious and versatile living, complemented by a welcoming garden and a large woodland, perfect for modern family life. Thoughtfully arranged over two floors, the main living accommodation is situated on the first floor and features a bright and airy living room with a wood-burning stove, ideal for cosy evenings. The high-quality kitchen/diner comes with integrated appliances and opens onto a sheltered balcony, creating a lovely space for dining or enjoying the outdoors. There is also a utility, cloakroom, and a versatile fifth bedroom, which could be used as a home office or study. On the ground floor, the property offers the bedroom accommodation, including a master bedroom with en-suite, two further double bedrooms, and a single bedroom.



Visit us at
www.pooletownsend.co.uk
enquiries@pooletownsend.co.uk

We are open
 Monday – Friday 9.00 – 5.00
 Saturday 9.00 – 1.00

Barrow 01229 811811
 Ulverston 01229 588111
 Grange 015395 33316
 Kendal 01539 734455
 Milnthorpe 015395 62044