



30 Nutley Way
, Bournemouth, BH11 8LD

£1,500 Per month



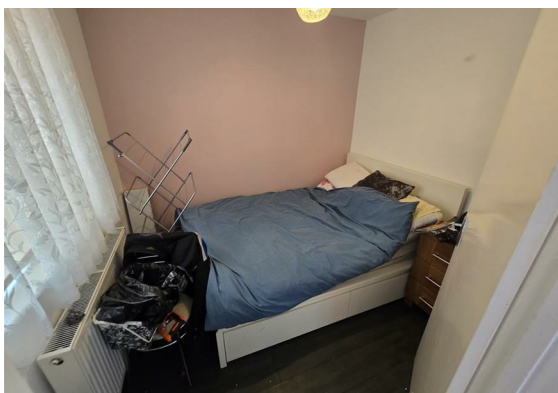
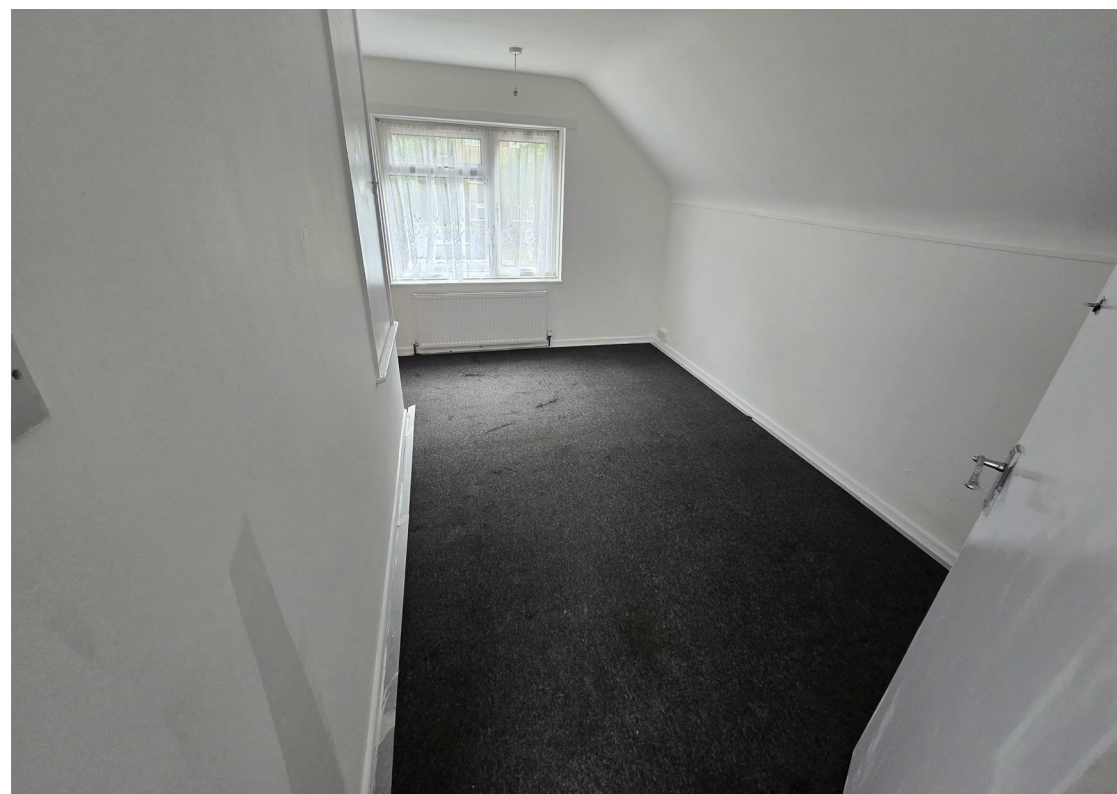
30 Nutley Way

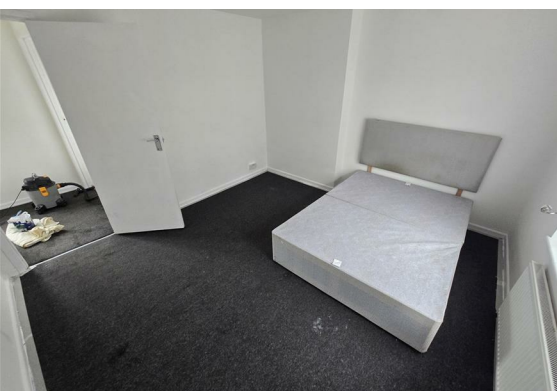
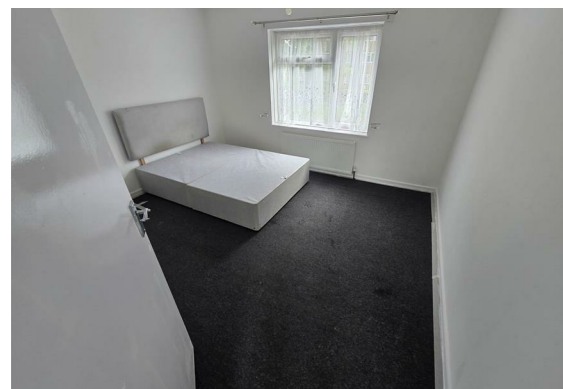
, Bournemouth, BH11 8LD

Spacious Semi-detached family house to let in the suburbia of Bournemouth. The house offers a large driveway to park up to two cars. Internally the ground floor area has a large lounge come dining room and around the back there is a long kitchen overlooking the back garden. One double room with front aspect or a second living /office room. Upstairs two large double rooms to the front and a loo and a family bathroom to the back. Some storage rooms off a arch area to the left side of the property and a patio with a considerable garden loan at the rear of the property. Available now.

Council Tax Band: B

EPC Rate: 69 | C





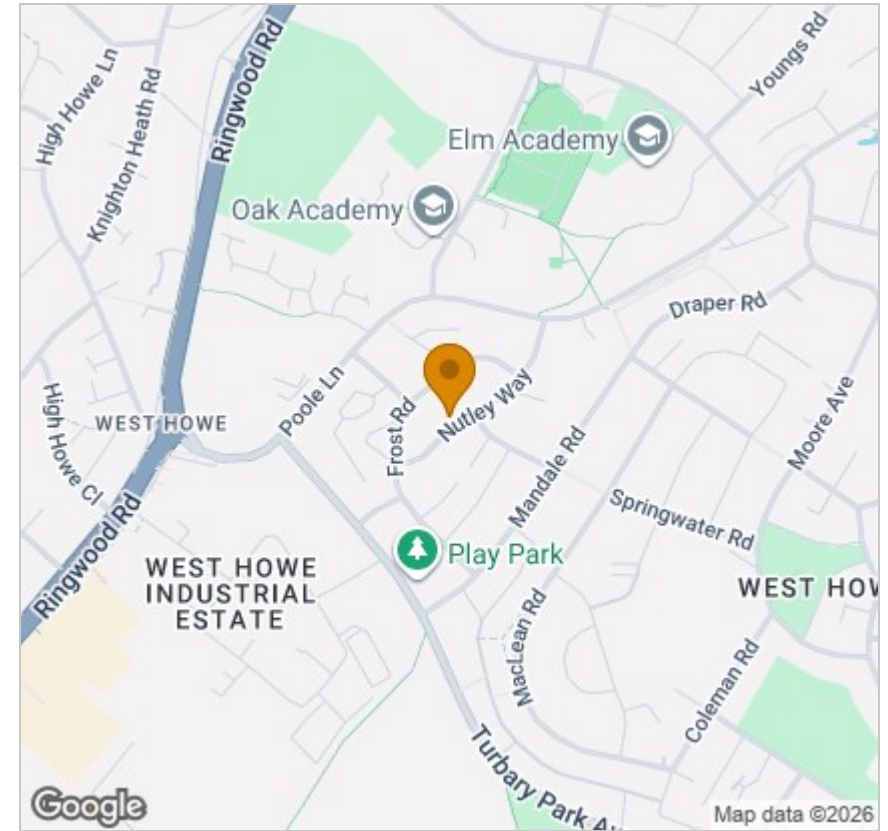
Floor Plan



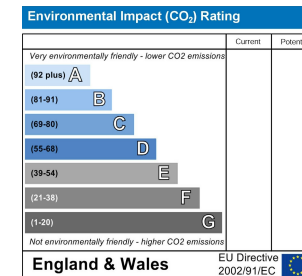
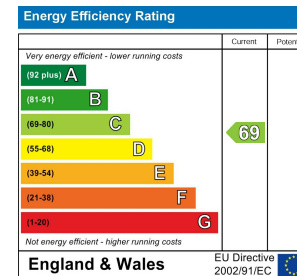
Viewing

Please contact our Tenant Find Only Office on if you wish to arrange a viewing appointment for this property or require further information.

Area Map



Energy Efficiency Graph



These particulars, whilst believed to be accurate are set out as a general outline only for guidance and do not constitute any part of an offer or contract. Intending purchasers should not rely on them as statements of representation of fact, but must satisfy themselves by inspection or otherwise as to their accuracy. No person in this firm's employment has the authority to make or give any representation or warranty in respect of the property.