



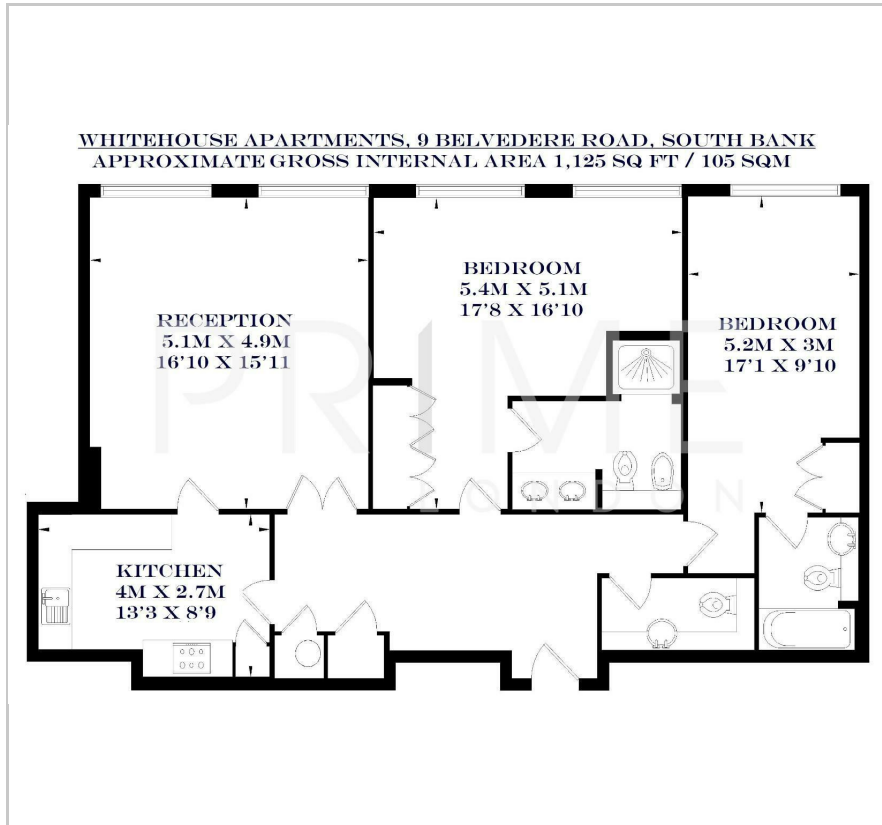
Whitehouse Apartments

9 Belvedere Road, South Bank, SE1 8YW

£900 Per Week



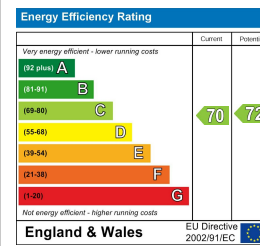
Floor Plan



Area Map



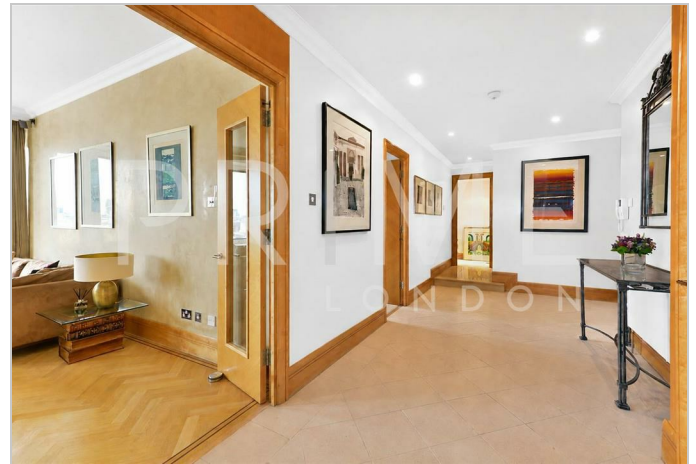
Energy Efficiency Graph



Viewing

By appointment. Contact us on 0207 928 6663 if you wish to arrange a viewing appointment for this property, or require further information.

- 1,125 sq ft (105 sqm)
- Superior on-site facilities
- Courtyard garden
- Directly on the South Bank

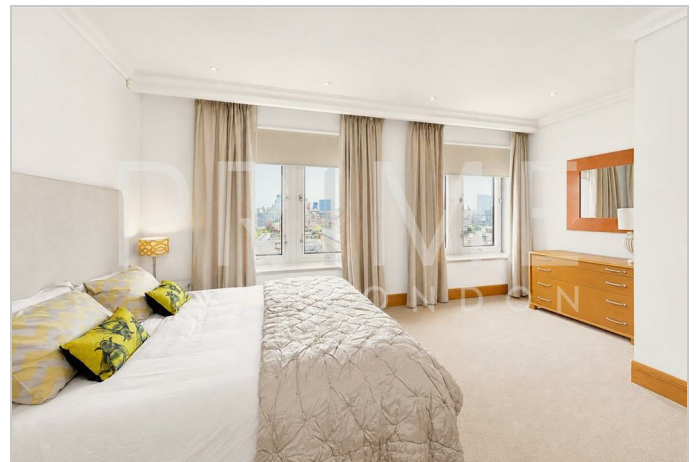


A spacious and luxurious executive Stateroom at Whitehouse Apartments, South Bank, available for lease exclusively through Prime London.

The property offers 1,125 sq ft (105 sqm) of sophisticated living accommodation which includes a spacious reception and dining room with views over the city, separate fitted kitchen with integrated appliances, spacious carpeted bedrooms both with en suite facilities, ample storage and separate guest WC.

Residents of the Whitehouse Apartments enjoy exclusive use of the superior on-site facilities, namely a well maintained courtyard garden, gymnasium, indoor heated swimming pool, spa and expansive rooftop terrace.

Within walking distance of the South Bank's many amenities as well as Waterloo and Westminster stations, the location provides direct transport links into the City and West End.



These particulars, whilst believed to be accurate are set out as a general outline only for guidance and do not constitute any part of an offer or contract. Intending purchasers should not rely on them as statements of representation of fact, but must satisfy themselves by inspection or otherwise as to their accuracy. No person in this firm's employment has the authority to make or give any representation or warranty in respect of the property.