



Beche House, Circular Road South, Colchester, CO2 7UE

welcome to

Beche House, Circular Road South, Colchester

This modern two bedroom apartment is situated on the south side of Colchester, offering excellent access to local amenities and Abbey Fields and within easy reach of the city centre and town train station.



Early viewing is advised of this well presented apartment conveniently situated for access to amenities and transport links and providing an ideal first time purchase or investment opportunity.

Communal Entrance Door To:

Communal Entrance Hall

Entrance Door To:

Hallway

Doors to:

Living Room

Double glazed window overlooking Abbey Fields, two radiators, carpet, leading to:

Kitchen

Modern range of matching base and eye level units, work surfaces, inset sink and drainer unit, tiled splashbacks, built-in oven and hob with extractor fan over, built-in fridge/freezer and dishwasher, space for washing machine, laminate flooring.

Bedroom One

Double glazed window, carpet, radiator, built-in wardrobe, door to:

En Suite

Modern suite comprising double shower cubicle, wash hand basin set into vanity unit and low level w.c., fully tiled walls and flooring, heated towel rail.

Bedroom Two

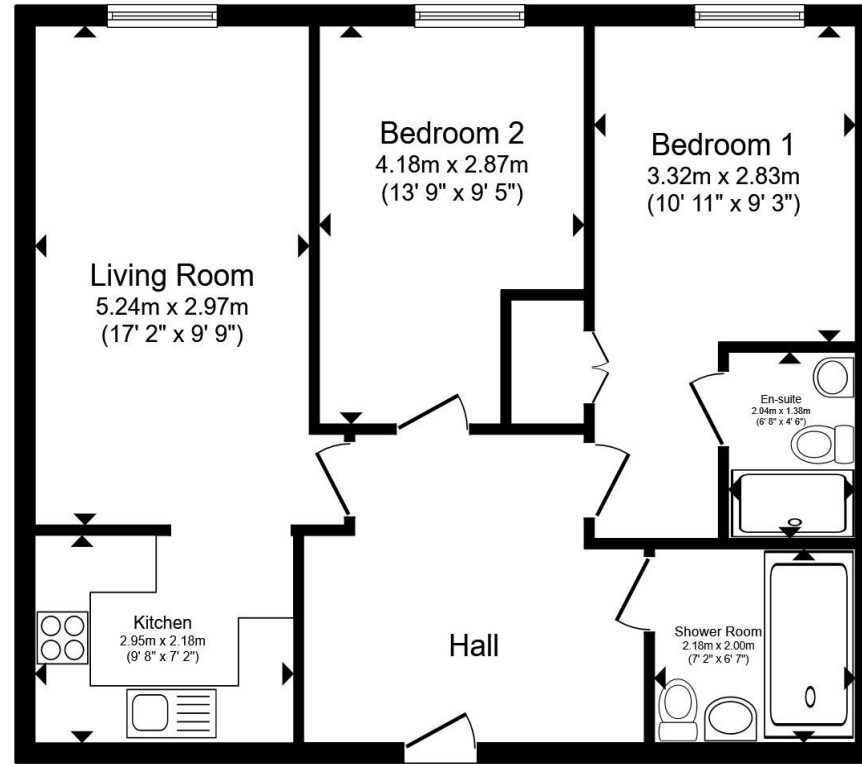
Double glazed window, radiator, carpet.

Bathroom

Modern three piece suite comprising panel enclosed bath, pedestal wash hand basin and low level w.c., part tiled walls heated towel rail, wood effect flooring.

Outside

The property benefits from allocated parking space.



Total floor area 66.7 m² (718 sq.ft.) approx

This floor plan is for illustrative purposes only. It is not drawn to scale. Any measurements, floor areas (including any total floor area), openings and orientation are approximate. No details are guaranteed, they cannot be relied upon for any purpose and they do not form part of any agreement. No liability is taken for any error, omission or misstatement. A party must rely upon its own inspection(s). Powered by www.propertybox.io


william
h brown



view this property online williamhbrown.co.uk/Property/CCS121473



welcome to

Beche House, Circular Road South

- Modern Second Floor Apartment
- Spacious Living Accommodation
- Two Double Bedrooms
- Modern En Suite & Family Bathroom
- Allocated Parking Space
- Overlooking Abbey Fields

Tenure: Leasehold EPC Rating: B

Council Tax Band: B Service Charge: 1400.00

Ground Rent: 250.00

This is a Leasehold property with details as follows; Term of Lease 125 years from 01 Jan 2005. Should you require further information please contact the branch. Please Note additional fees could be incurred for items such as Leasehold packs.

offers in excess of

£160,000



Please note the marker reflects the postcode not the actual property

view this property online williamhbrown.co.uk/Property/CCS121473



Property Ref:
CCS121473 - 0002

1. MONEY LAUNDERING REGULATIONS Intending purchasers will be asked to produce identification documentation at a later stage and we would ask for your co-operation in order that there is no delay in agreeing the sale. 2. These particulars do not constitute part or all of an offer or contract. 3. The measurements indicated are supplied for guidance only and as such must be considered incorrect. Potential buyers are advised to recheck measurements before committing to any expense. 4. We have not tested any apparatus, equipment, fixtures or services and it is in the buyers interest to check the working condition of any appliances. 5. Where an EPC, or a Home Report (Scotland only) is held for this property, it is available for inspection at the branch by appointment. If you require a printed version of a Home Report, you will need to pay a reasonable production charge reflecting printing and other costs. 6. We are not able to offer an opinion either written or verbal on the content of these reports and this must be obtained from your legal representative. 7. Whilst we take care in preparing these reports, a buyer should ensure that his/her legal representative confirms as soon as possible all matters relating to title including the extent and boundaries of the property and other important matters before exchange of contracts.

William H Brown is a trading name of Sequence (UK) Limited which is registered in England and Wales under company number 4268443, Registered Office is Cumbria House, 16-20 Hockliffe Street, Leighton Buzzard, Bedfordshire, LU7 1GN. VAT Registration Number is 500 2481 05.

directions to this property:

Refer to map



william h brown



01206 577772



Colchester@williamhbrown.co.uk



8 Culver Street West, COLCHESTER, Essex, CO1 1JG



williamhbrown.co.uk