



## Hereford Road, W2

£350,000

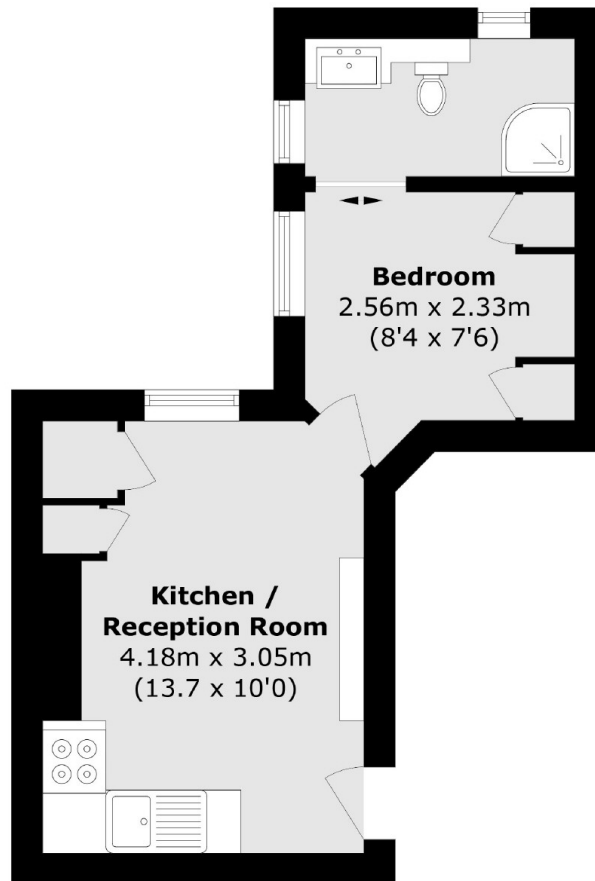
A first floor apartment in a white stucco fronted Victorian conversion. There is a modern kitchen which is open plan to the reception room, a double bedroom with wall-mounted storage and a contemporary shower suite.

Hereford Road is ideally located between Westbourne Grove and Notting Hill Gate. Hyde Park is a short walk away as are the transport links of Queensway, Bayswater and Notting Hill Gate.

### Features

- One Bedroom
- Open Plan
- White Stucco Fronted
- Second Floor
- Contemporary En Suite

# Hereford Road, London, W2



Total area (approx.): 22.0 sq. m (236.8 sq. ft)