



Shore Place, E9

£695,000

A two double bedroom, two bathroom modern apartment measuring in excess of 900 square foot. This property has an open plan kitchen/reception with space for dining, two private balconies and is located within a secure development. The apartment is being sold with vacant possession and is chain free.

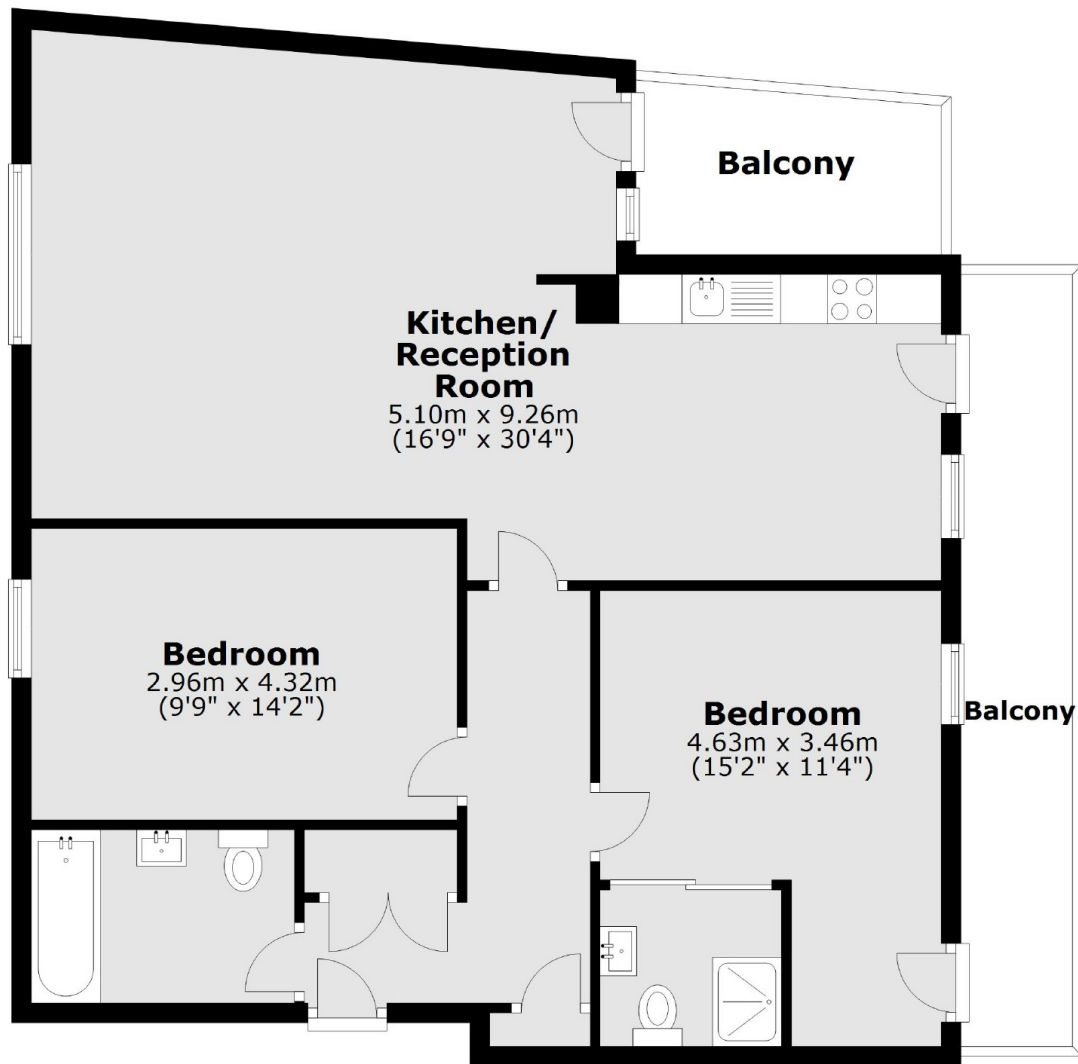
Positioned between London Fields and Victoria Park, the apartment is ideally located for the vibrant cafés, restaurants, green spaces, and local amenities of Hackney. The closest transport connections are within easy reach, with Hackney Central railway station and Cambridge Heath railway station both less than half a mile away.

Features

- Chain Free
- Penthouse
- Two Private Balconies
- Secure Bike Storage
- 901 Square Feet
- Lift
- London Fields Station

Shore Place,
London, E9

Fourth Floor



Main area: Approx. 83.7 sq. metres (900.6 sq. feet)
Plus balconies, approx. 14.5 sq. metres (155.8 sq. feet)