



## Heathdale Avenue, TW4

£1,825 Per calendar month

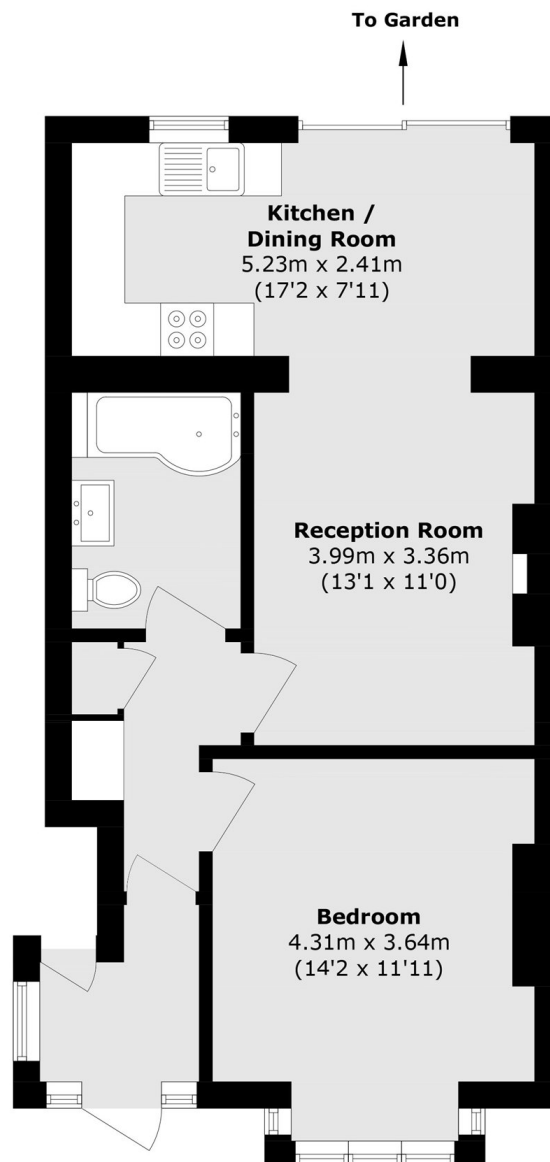
A well presented ground floor apartment offering a bright reception, modern kitchen dining space, spacious double bedroom and bathroom, plus a private garden, free on street parking, and convenient access to local amenities and transport links.

Nearby amenities include schools, shops, restaurants and takeaways, while transport links feature Hounslow West Underground, frequent buses and easy access to the A4/M4, offering excellent connections to Heathrow, London and Hounslow Town Centre.

### Features

- One Bedroom
- Modern Kitchen
- Open-Plan
- Private Garden
- Free Parking
- Transport Links

# Heathdale Avenue, Hounslow, TW4



Total area (approx.): 56.1 sq. m (603.8 sq. ft)

## Dexters

Isleworth  
568 London Road  
Isleworth  
TW7 4EP  
Lettings  
020 8560 1717

Energy Rating: C. We aim to make our particulars both accurate and reliable. However they are not guaranteed; nor do they form part of an offer or contract. If you require clarification on any points then please contact us, especially if you're traveling some distance to view. Please note that appliances and heating systems have not been tested and therefore no warranties can be given as to their good working order.

 **RICS** | Regulated  
Estate Agent  
and Letting Agent

[dexters.co.uk](https://www.dexters.co.uk)