



## Ashburn Gardens, SW7

£807 Per week

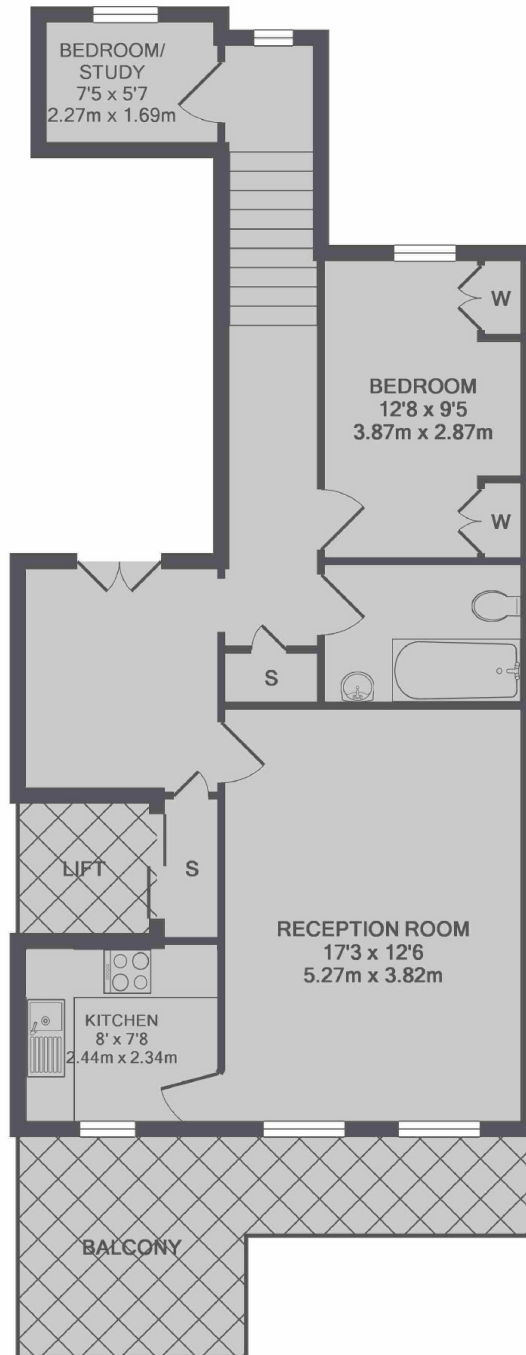
A furnished one-bedroom flat, plus extra study/small bedroom available to let, situated on the first floor of a stucco-fronted Victorian building, with direct lift access. The property features a private terrace and contemporary furnishings, and is ideally located just off Gloucester Road.

Conveniently located near Gloucester Road, the property benefits from close proximity to a wide range of cafés, shops, and restaurants, including Waitrose supermarket, Boots pharmacy, Pret coffee shop, and Black & Blue steakhouse. Gloucester Road Underground Station is the nearest tube station, offering excellent transport links.

### Features

- Two Double Bedrooms
- First Floor
- High Ceilings
- Private Terrace
- Direct Lift Access
- Gloucester Road Underground

# Ashburn Gardens, London, SW7



TOTAL APPROX. FLOOR AREA 685 SQ.FT. (63.6 SQ.M.)