



Beaconsfield Road, KT5

£700,000

Dexters



Beaconsfield Road, KT5

This charming exposed brick, Victorian home is beautifully presented throughout, showcasing a wealth of character and original features. The accommodation comprises a spacious bay-fronted living room, a bright rear dining room, a stylish integrated kitchen, two generous double bedrooms, a large family bathroom, and a delightful private garden.

The ground floor offers two elegant reception rooms, providing versatile living and entertaining space, which lead through to a well-appointed kitchen with concertina doors opening directly onto the private rear garden.

Upstairs, there are two well-proportioned double bedrooms and a spacious four-piece family bathroom.

Externally, the property benefits from a private rear garden, complete with a patio area and a well-maintained lawn, ideal for relaxing or entertaining.

Beaconsfield Road is a desirable and sought after road with Fishponds Park and Alexandra Park just under 0.2 miles away and the convenience of local shops, bars and restaurants on your doorstep. Surbiton town centre with its fast train links into London is just under a mile away.

Features

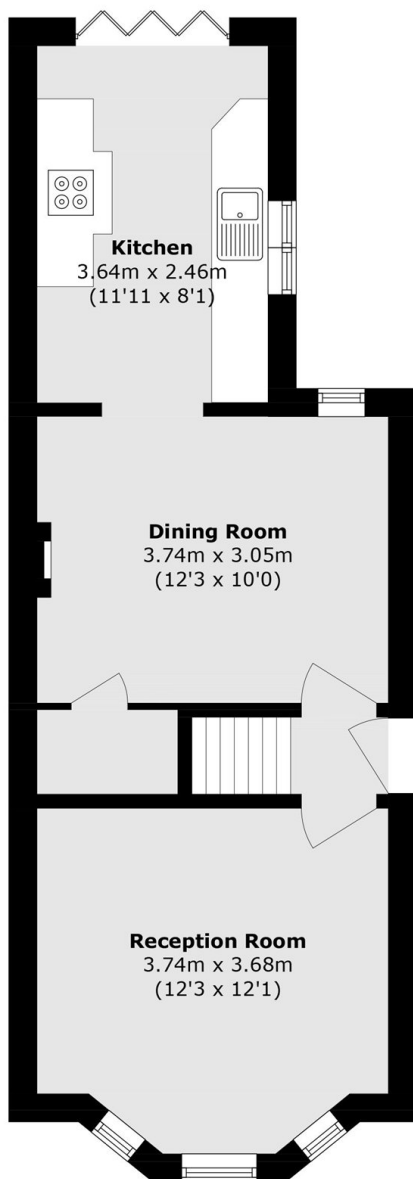
- Victorian House
- Two Double Bedrooms
- Large Bathroom
- Smart Kitchen
- Lovely Garden
- Sought After Road



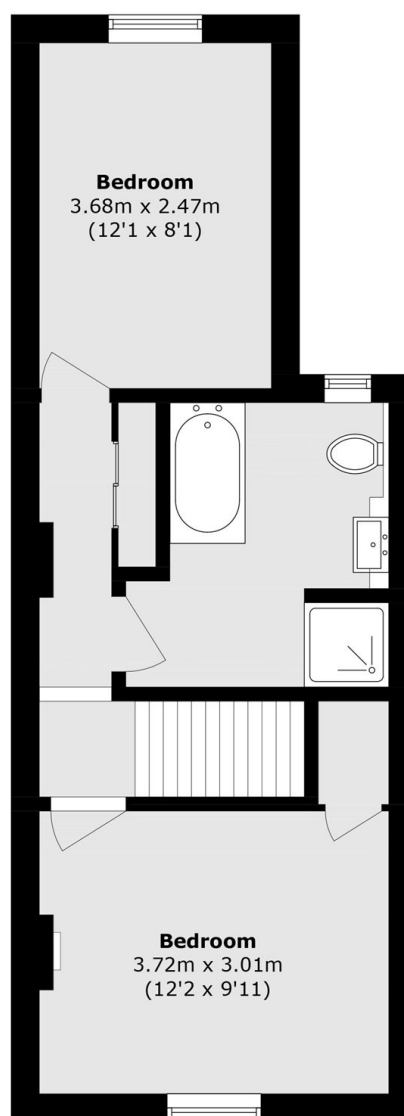




Beaconsfield Road, Surbiton, KT5



Ground Floor



First Floor

Total area (approx.): 74.8 sq. m (805.1 sq. ft)