



5 Gilbert Close, Newport, TF10 7UU
£460 Per Week

A great student house suitable for four students. This modern contemporary house has a modern kitchen and three modern bathrooms, these compliment the large kitchen diner, spacious lounge and utility room. The four bedrooms all have larger beds, there is excellent parking and the landlord is including a two weekly cleaning service of the communal areas to make life that little easier!

Hall

Lounge



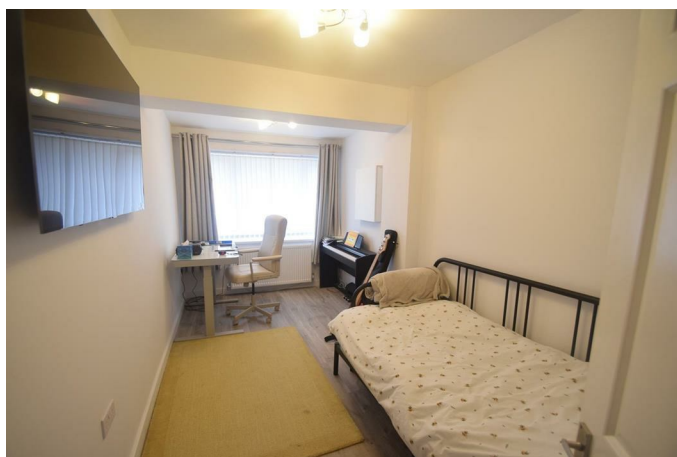
Kitchen Diner



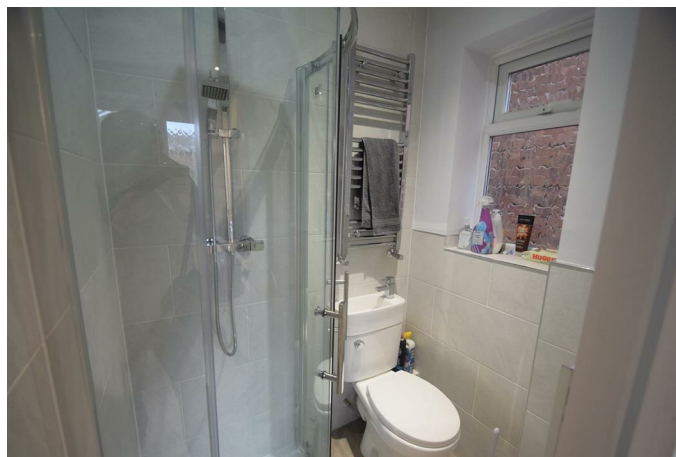
Utility Room



Ground Floor Bedroom



Ground Floor Shower Room



Bedroom Two



En-Suite Shower Room



Bedroom Three



Bedroom Four



Bathroom

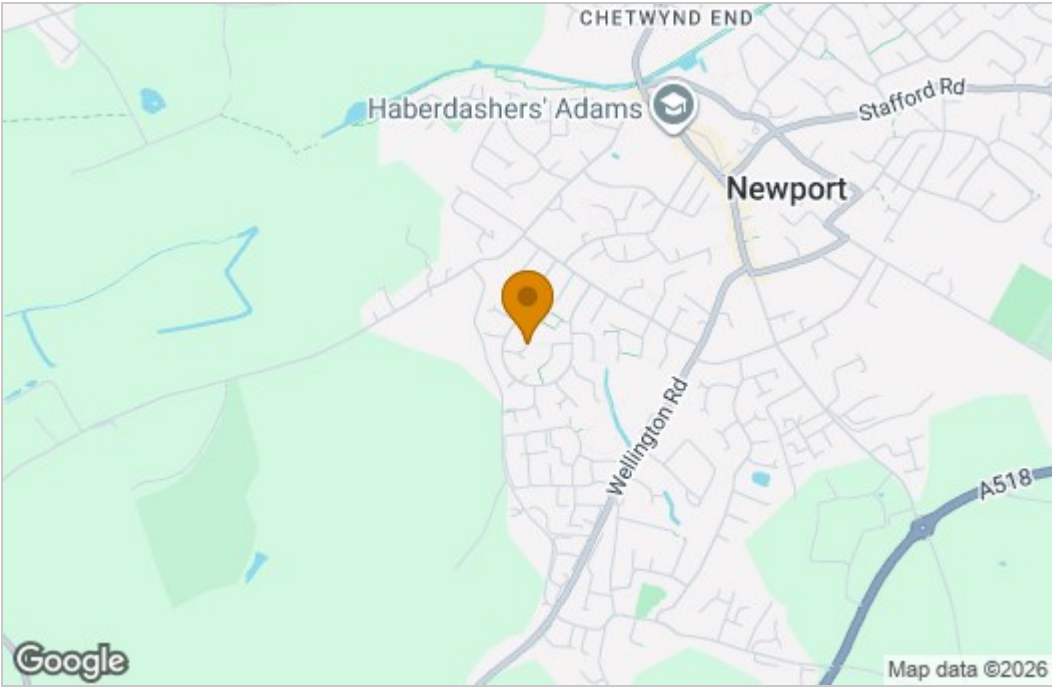


Outside

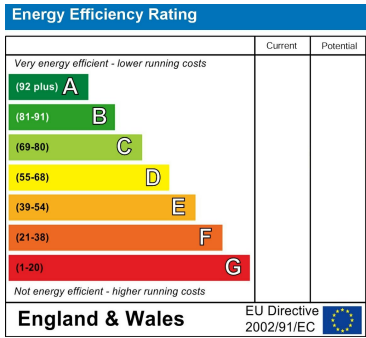
The property benefits from off-road parking for multiple cars. It is also situated in a cul-de-sac location and within walking distance of Newport town centre.

Floor Plan

Area Map



Energy Efficiency Graph



These particulars, whilst believed to be accurate are set out as a general outline only for guidance and do not constitute any part of an offer or contract. Intending purchasers should not rely on them as statements of representation of fact, but must satisfy themselves by inspection or otherwise as to their accuracy. No person in this firms employment has the authority to make or give any representation or warranty in respect of the property.