



Sutherland Grove, SW18

£4,500 Per calendar month

This spacious four double bedroom property has three bathrooms, two separate living areas and two kitchens, as well as off-street parking. Making it an ideal property for professional sharers.

Sutherland Grove is a highly desired location, benefitting from close proximity to both East Putney and Southfields underground stations, as well as sought after Primary and Secondary Schools.

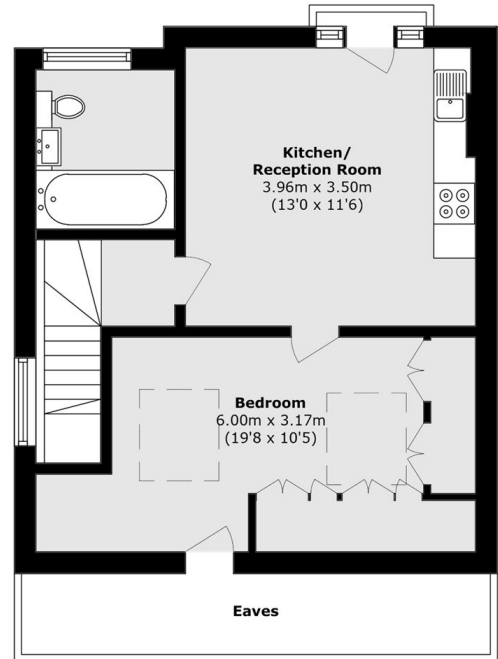
Features

- Four Bedrooms
- Two Kitchens
- Three Bathrooms
- Parking
- Furnished
- Perfect For Sharers

Sutherland Grove, London, SW18



First Floor



Second Floor

Total area (approx.): 103.8 sq. m (1117.3 sq. ft)
(Excluding Eaves)