



3 Bed Bungalow - Detached

Pear Tree Croft Northwood Lane, Darley Dale, Matlock DE4 2HS
Offers Around £349,950 Freehold



3



1



2



C

**Fletcher
& Company**

www.fletcherandcompany.co.uk

- Highly Appealing Detached Bungalow
- Private Position - Countryside Views
- Lounge & Kitchen/Diner
- Three Bedrooms & Bathroom
- Useful Attic Room
- Pleasant Gardens
- Long Driveway - Plenty of Car Standing Spaces
- Attached Garage with Utility Area
- No Chain Involved
- Viewing Highly Recommended

Nicely tucked away with open views, this three bedroom detached bungalow with useful attic room is located in a popular position in Darley Dale and offered for sale with no chain involved.

The Location

Pear Tree Croft is located at the top of Northwood, equidistant between Bakewell and Matlock. Walking, cycling and driving routes around the majestic Peak District are possible in all directions and the popular market towns of Buxton and Chesterfield are close by too. Chatsworth House and the Chatsworth Estate are within 5 miles too. It is a tremendous location in all respects.

Accommodation

Entrance Hall

20'1" x 14'8" x 4'7" x 3'10" (6.13 x 4.49 x 1.41 x 1.17)

With double glazed entrance door, two radiators, inset door mat, solid oak wood flooring, wall lights, coving to ceiling and double glazed window with leaded finish.

Lounge

15'8" x 11'6" (4.79 x 3.53)

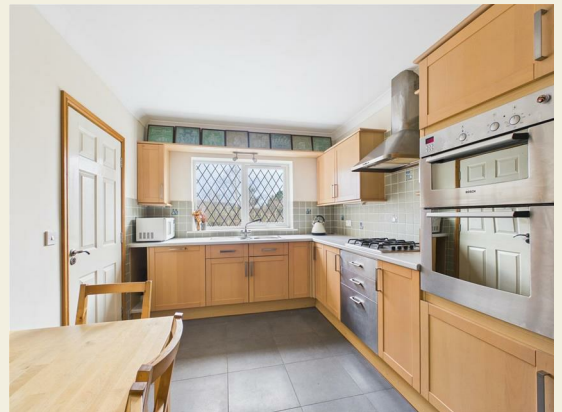
With solid oak wood flooring, wall lights, radiator, coving to ceiling, countryside views, internal panelled door with chrome fittings and double glazed sliding patio door opening onto raised patio and garden.



Kitchen/Diner

17'1"x 8'10" (5.23x 2.71)

With one and a half stainless steel sink unit with mixer tap, wall and base fitted units with matching worktops, built-in four ring gas hob with extractor hood over, built-in double electric fan assisted oven, integrated dishwasher, space for fridge/freezer, tile flooring, spiral staircase, radiator, coving to ceiling, countryside views, built-in cupboard providing storage with shelving and radiator and internal panelled door with chrome fittings.



Bedroom One

10'11" x 10'7" (3.35 x 3.24)

With radiator, coving to ceiling, countryside views, double glazed window with leaded finish and internal panelled door with chrome fittings.



En-Suite

6'7" x 4'9" (2.02 x 1.46)

With separate shower cubicle with shower, pedestal wash handbasin, low level WC, tile splashbacks, tile flooring, radiator, coving to ceiling, double glazed window with leaded finish and internal panelled door with chrome fittings.



Bedroom Two

10'2" x 7'8" (3.11 x 2.35)

With radiator, coving to ceiling, double glazed window to side with leaded finish and internal panelled door.



Bedroom Three

11'5" x 7'8" (3.48 x 2.34)

With radiator, coving to ceiling, double glazed window with leaded finish to front and internal panelled door.



Bathroom

8'10" x 6'4" (2.71 x 1.95)

With corner bath, pedestal wash handbasin, low level WC, tile splashbacks, tile flooring, radiator, coving to ceiling, double glazed window with leaded finish and internal panelled door with chrome fittings.



Attic Room

7'4" x 4'1" (2.25 x 1.25)

With spiral staircase leading to ground floor, countryside views and double glazed Velux style window.

Attic Room

12'7" x 11'11" (3.85 x 3.65)

With exposed wood flooring, storage into eaves, radiator, countryside views, three double glazed Velux style windows and internal panelled door with chrome fittings.



Attic Room

12'9" x 12'9" (3.91 x 3.89)

With exposed wood floors, storage into eaves, spotlights to ceiling, radiator, countryside views, two double glazed Velux style windows and internal panelled door.



Attic Room

7'5" x 4'1" (2.28 x 1.25)

With separate shower cubicle with electric shower, pedestal wash handbasin, low level WC, exposed wood floor, radiator, skylight window to front and internal panelled door with chrome fittings.



Gardens

The property enjoys a lawn garden with raised sun patio/terrace area with balustrade and countryside views to rear.



Driveway

A long driveway leads to the property and provides car standing spaces for several cars.

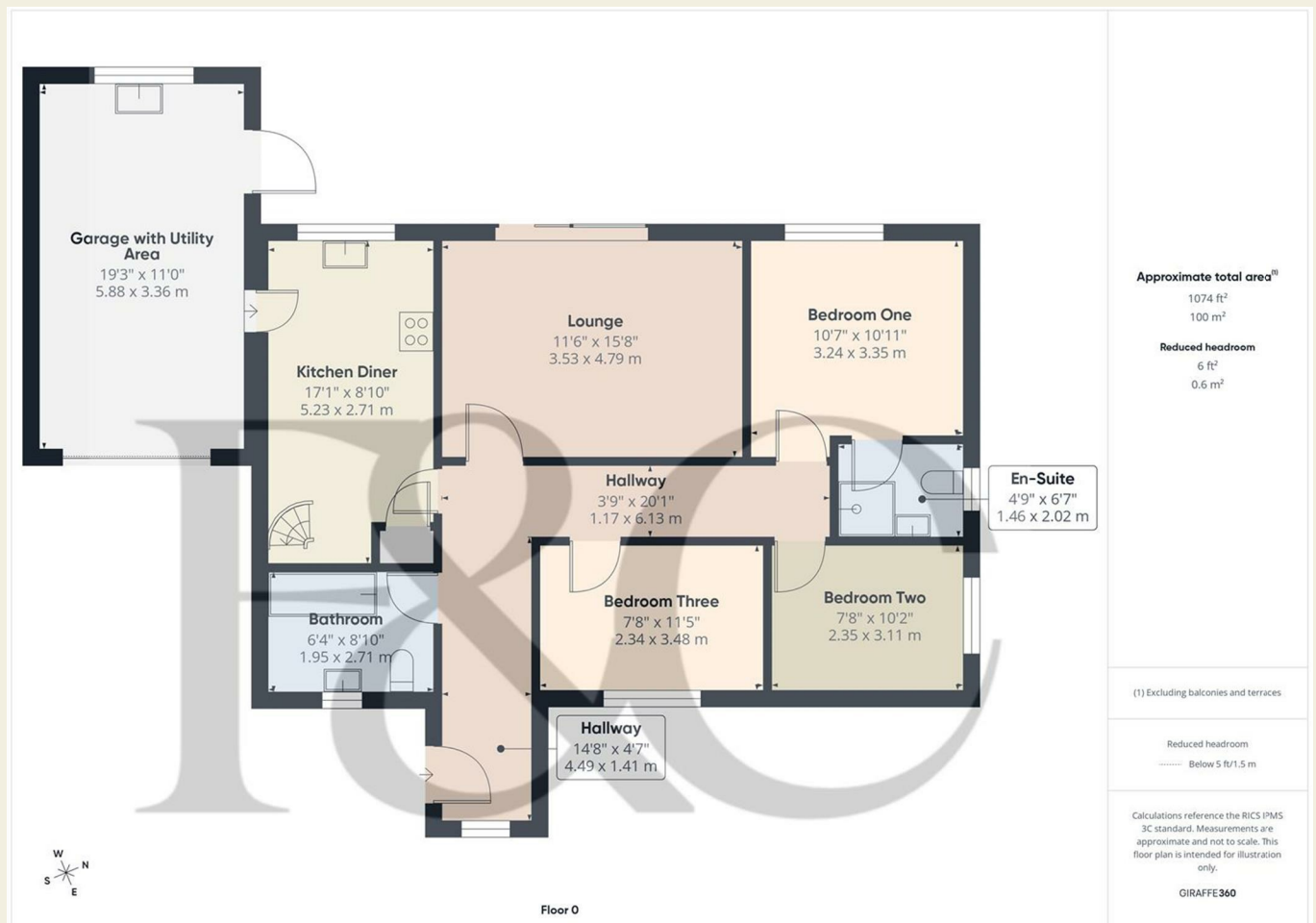


Garage with Utility Area

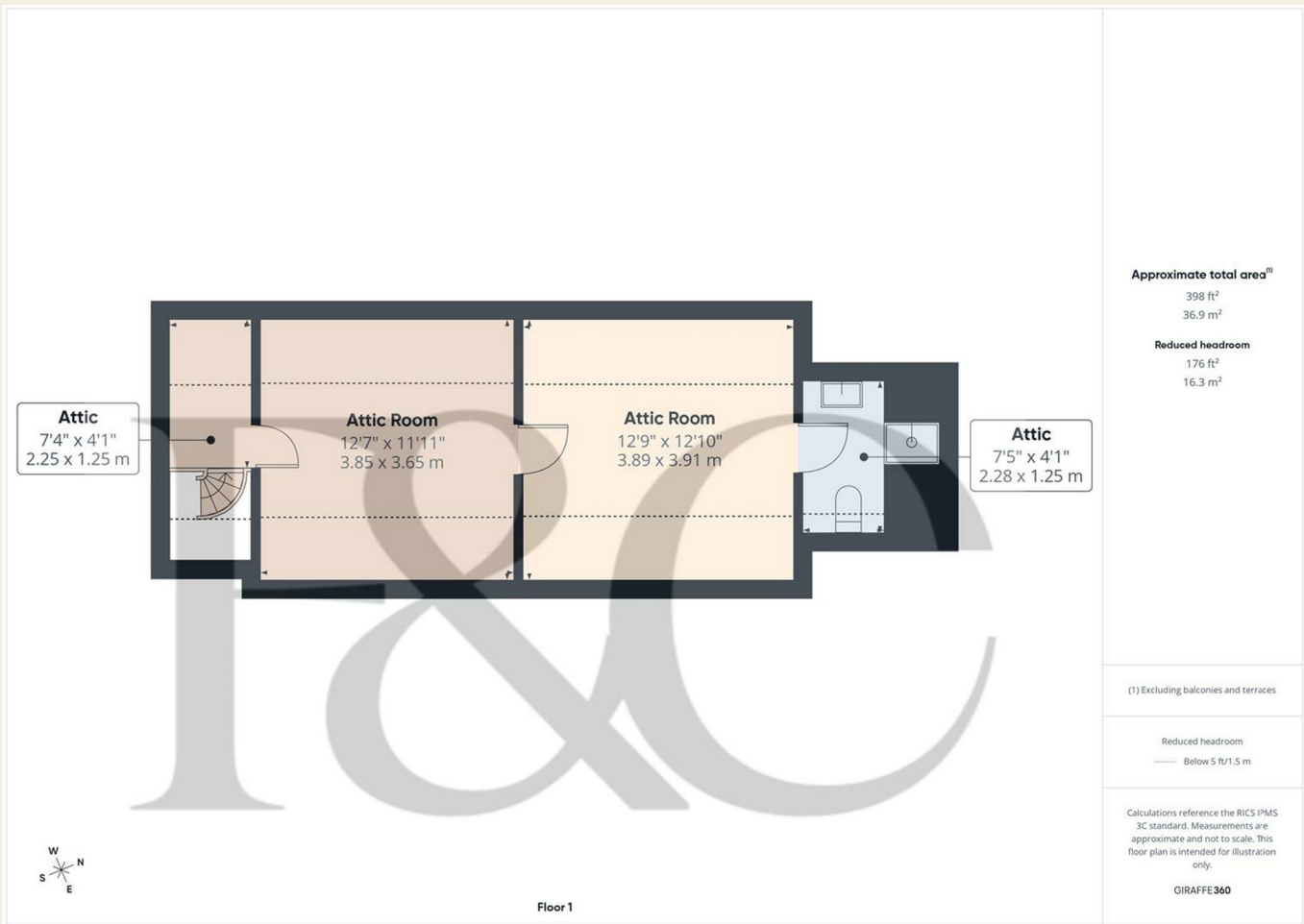
19'3" x 11'0" (5.88 x 3.36)

With concrete floor, power, lighting, single stainless steel sink unit with mixer tap, plumbing for automatic washing machine, storage cupboards, worktops, countryside views to rear, wall mounted boiler, double glazed window, double glazed door giving access to garden, manual operated up and over front door and integral door giving access to property.

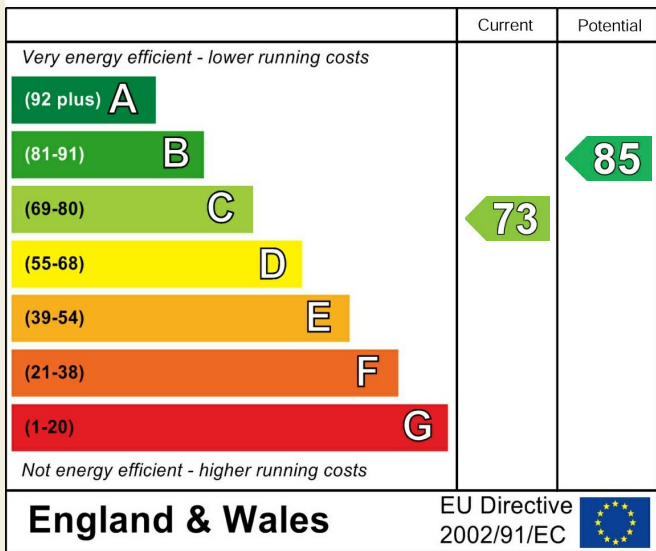
Council Tax Band D



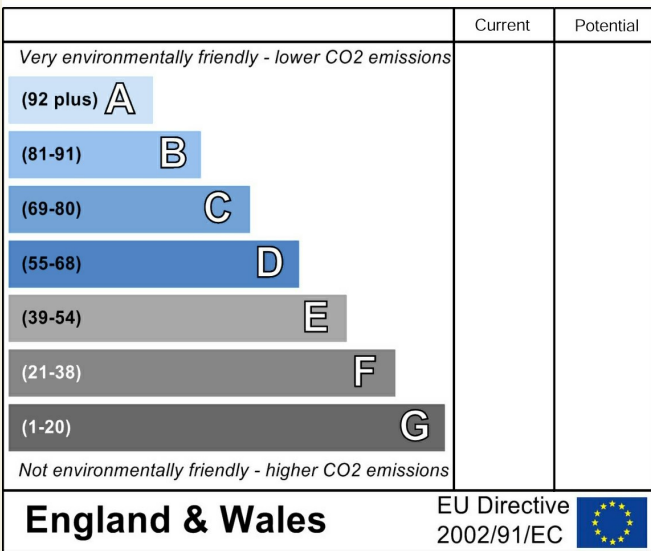
These particulars do not constitute an offer or a contract neither do they form part of an offer or contract. The vendor does not make or give and Messrs. Fletcher & Company nor any person employed has any authority to make or give any representation or warranty, written or oral, in relation to this property. Whilst we endeavour to make our sales details accurate and reliable, if there is any point which is of particular importance to you, please contact the office and we will be pleased to check the information for you, particularly if contemplating travelling some distance to view the property. None of the services or appliances to the property have been tested and any prospective purchasers should satisfy themselves as to their adequacy prior to committing themselves to purchase.



Energy Efficiency Rating



Environmental Impact (CO₂) Rating



These particulars do not constitute an offer or a contract neither do they form part of an offer or contract. The vendor does not make or give and Messrs. Fletcher & Company nor any person employed has any authority to make or give any representation or warranty, written or oral, in relation to this property. Whilst we endeavour to make our sales details accurate and reliable, if there is any point which is of particular importance to you, please contact the office and we will be pleased to check the information for you, particularly if contemplating travelling some distance to view the property. None of the services or appliances to the property have been tested and any prospective purchasers should satisfy themselves as to their adequacy prior to committing themselves to purchase.