




SCOTT WINDLE POWERED BY **exp** <sup>TM</sup> UK

@ [scott.windle@exp.uk.com](mailto:scott.windle@exp.uk.com)

 [scottwindle.exp.uk.com](http://scottwindle.exp.uk.com)

 07838 311 550



# Assart Way, Chippenham

Guide Price £285,000

🛏 2 🚿 1 🚿 1





**Reference; SW0341.** Beautifully presented two double bedroom semi detached property built by Bloor Homes about 4 years ago, pleasantly situated on the new and highly sought after Hilltop Park development offering excellent access to the M4 motorway, A4, A420 and the Town Centre with mainline railway station. The property offers spacious and light accommodation throughout and in brief comprises; Entrance hallway with the stairs rising to the first floor, lounge, kitchen / dining room with double doors opening to the garden, utility area with space for washing machine, and a downstairs cloakroom. To the first floor are two double bedrooms, the master with built in wardrobes, and a family bathroom. Externally there is a large, easily maintainable, South/Easterly facing landscaped garden with garden office. The garden offers a good degree of privacy and has gated side access leading to the driveway that provides parking for c.2 cars. This lovely property would make a fantastic first time buy and an internal viewing is highly recommended.

### Situation

The new and highly sought after Hilltop Park development offers excellent access to the major centres of Bath, Bristol, Swindon and London via the M4 motorway, A4 & A420. Just a short walk away is Sainsburys supermarket with pharmacy, Aldi and Bath Road retail park with a M&S Foodhall and Costa. The highly regarded secondary schools of Sheldon and Hardenhuish are both within easy reach. A more comprehensive range of amenities can be found in the nearby town centre including the mainline railway station (London-Paddington), a range of shops, café's and restaurants, public library, college and sports facilities.

### Property Information

Freehold

Council Tax Band; C    EPC Rating; B

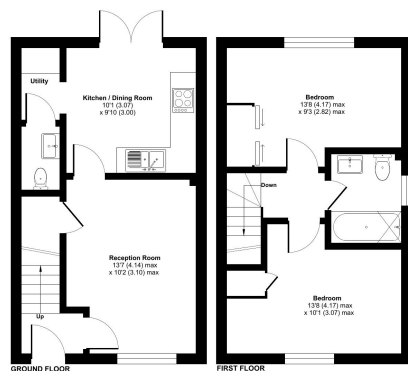
Gas Fired Central Heating

Estate Charge; TBC



Assart Way, Chippenham, SN14

Approximate Area = 656 sq ft / 60.9 sq m  
For identification only - Not to scale



Plot plan prepared in accordance with RICS Property Measurement Standards incorporating International Property Measurement Standards (IPMS) (Accessories). © 2024/2025. Prepared for: 2024/2025. Prepared by: 2024/2025.

- Please Quote Reference SW0341
- Built By Bloor Homes
- Excellent Access To M4, A4 & A420
- Beautifully Presented
- Semi Detached House
- Two Double Bedrooms
- Kitchen / Dining Room
- Utility Area & Cloakroom
- Large Landscaped Garden With Garden Office
- Driveway Parking To Side



96

83

eXp World UK Ltd is a registered company at Level 37, 25 Canada Square, London, E14 5LQ.

Registered company number is 12016573. VAT Registration Number is 327 4120 29