

## Broome Close, Horsham

Offers Over £450,000

4 1 3



An Extended Four Bedroom Family Home located towards the end of a Small Cul De Sac close to Popular Schools, boasting excellent Potential To Improve and No Onward Chain.

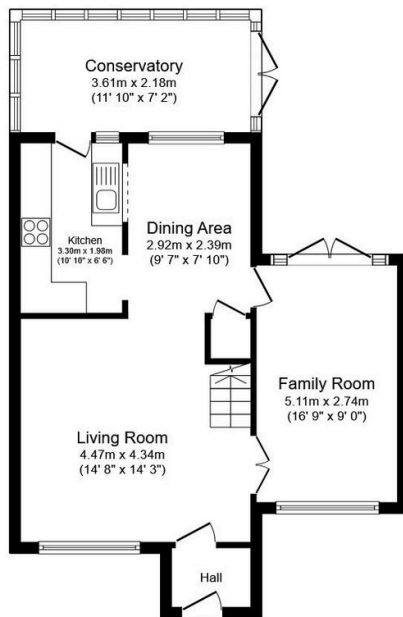
Tenure: Freehold

Council Tax Band: D

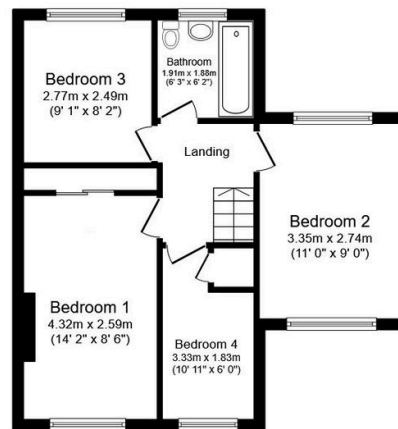
EPC: Current D - Potential B

## Key Features

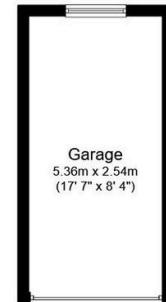
- Watch Our Video Tour
- No Onward Chain
- 17ft Garage & Parking
- Potential To Improve
- Cul De Sac Location
- Extended Family Home
- Four Generous Bedrooms
- Three Reception Rooms
- Close To Popular Schools
- 0.8 Miles From Littlehaven Station



**Ground Floor**  
Floor area 60.3 sq.m. (649 sq.ft.)



**First Floor**  
Floor area 45.4 sq.m. (489 sq.ft.)



**Garage**  
Floor area 13.9 sq.m.  
(149 sq.ft.)

**Total floor area: 119.6 sq.m. (1,287 sq.ft.)**

This floor plan is for illustrative purposes only. It is not drawn to scale. Any measurements, floor areas (including any total floor area), openings and orientations are approximate. No details are guaranteed, they cannot be relied upon for any purpose and do not form any part of any agreement. No liability is taken for any error, omission or misstatement. A party must rely upon its own inspection(s). Powered by [www.Propertybox.io](http://www.Propertybox.io)