



North End Road, SW6

£675,000

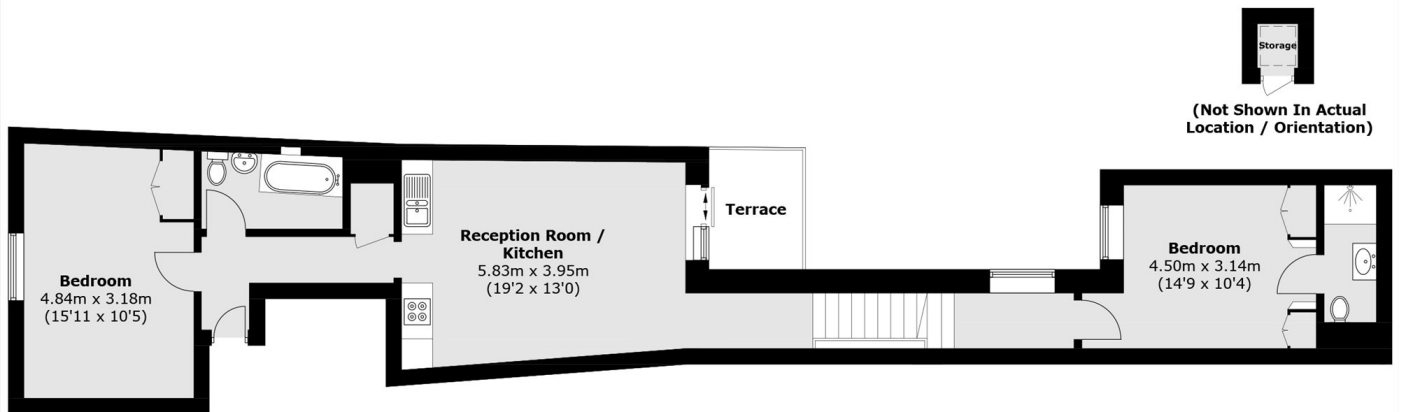
A spacious split-level, two double bedroom flat set within a building refurbished in 2015. The property features a bright open plan kitchen and living area, which offers direct access to a private roof terrace. Both bedrooms are generously proportioned and include ample built-in wardrobes, with the principal bedroom further benefiting from an en suite bathroom.

Enviably located within close proximity to the excellent transport links and amenities of Fulham Broadway, West Brompton, and Earl's Court. The open green spaces of Eel Brook Common are also just a short walk away.

Features

- Two Double Bedrooms
- Open Plan Kitchen Living
- Private Roof Terrace
- Share Of Freehold
- Chain Free
- Separate Utility Area

North End Road, London, SW6



Total area (approx.): 71.4 sq. m (768.5 sq. ft)
Storage: 0.8 sq. m (9 sq. ft)
Terrace: 4.1 sq. m (44.1 sq. ft)