



## Nursery Road, TW16

£1,100,000

A stunning five bedroom detached family home with a large rear garden and off-street parking. This spacious family home offers over 2,100 sq.ft of flexible accommodation spread over three floors. This property is ideal for an upsizing family looking for more space and their forever home.

Nursery Road is a great location, both Upper Halliford and Sunbury stations are close by and offer a direct service into London Waterloo. Additionally there is easy access onto the A316 with connections into London and easy access onto the M3 with connections onto the M25.

### Features

- Detached
- Five Bedrooms
- Three Reception Rooms
- Three Bathrooms
- Large Rear Garden
- Off-Street Parking



## Nursery Road, TW16

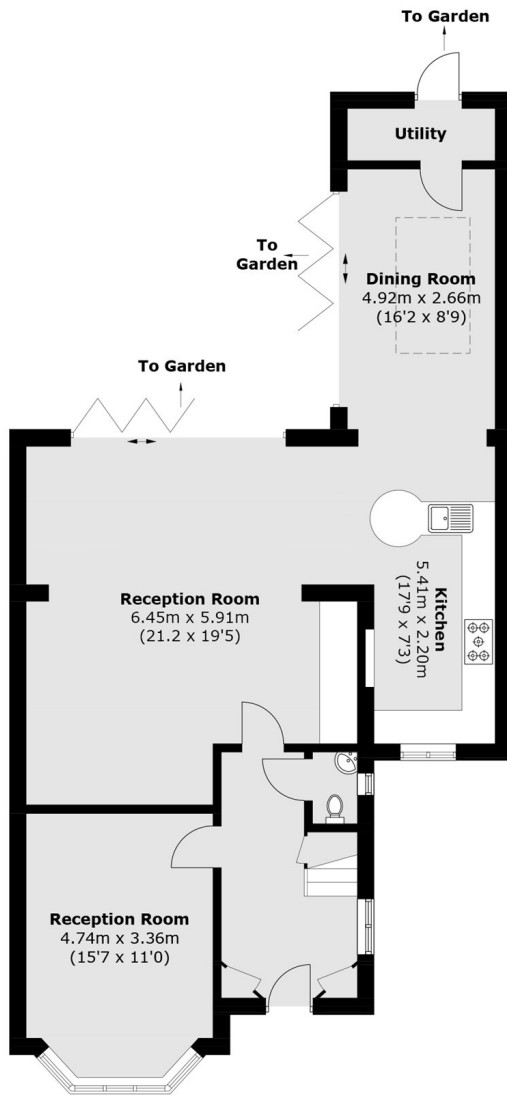
On the ground floor there is a welcoming entrance hallway with a cloakroom, a bay fronted reception room, an extended second reception room with bi-folding doors opening on to the decked section of the rear garden, a modern kitchen with a dining area and a utility room.

On the first floor there are four bedrooms, a generous family bathroom with bath and separate walk in shower and an additional shower room and W.C. The loft has been converted to provide an additional bedroom with an en suite bathroom.

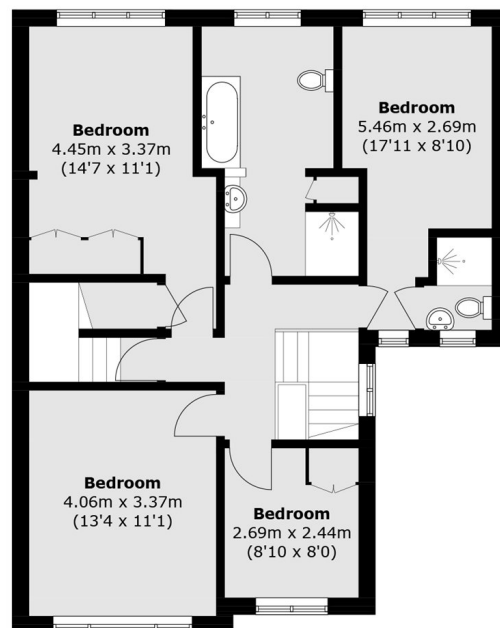
To the front of the property there is a driveway with off-street parking for two cars. To the rear is an amazing garden, the large decked area is ideal for entertaining friends and family and the kids will love playing on the expansive lawn.



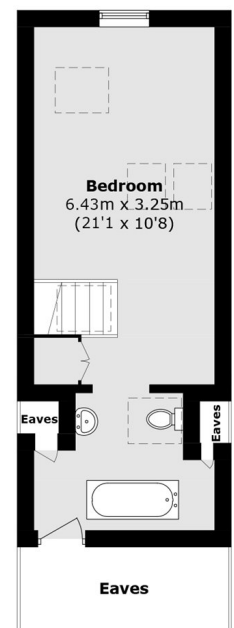
# Nursery Road, Sunbury-On-Thames, TW16



**Ground Floor**



**First Floor**



**Second Floor**

Total area (approx.): 196.8 sq. m (2,118.3 sq. ft)  
(Excluding Eaves)