

MAINE TOWER, HARBOUR WAY, E14

2 BED APARTMENT

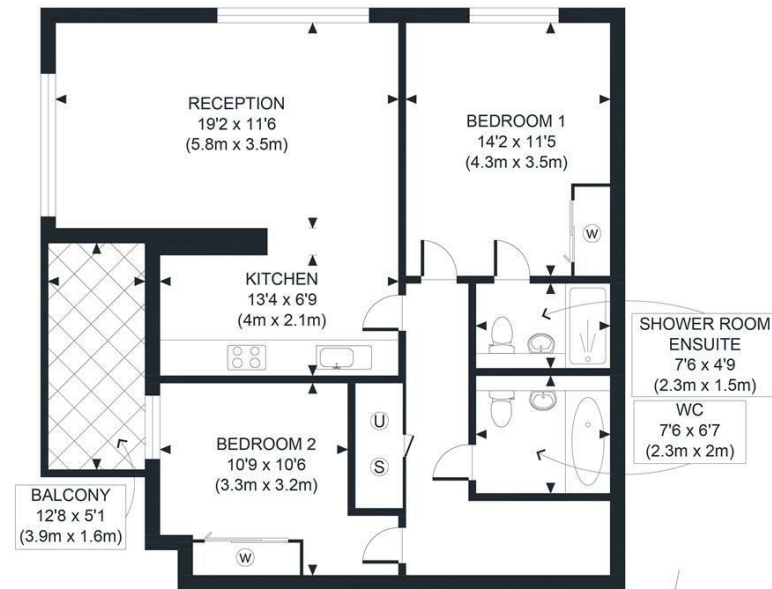
£700,000
LEASEHOLD

Welcome to this stunning two-bedroom apartment located on the 26th floor of a prestigious building in the heart of Canary Wharf, London E14. This property offers a perfect blend of modern living and convenience, making it an ideal choice for professionals and families alike.

As you enter the apartment, you are greeted by a spacious and light-filled living area that boasts breathtaking views. The open-plan design seamlessly connects the living room to a contemporary kitchen, which is equipped with high-quality appliances and ample storage space. The two well-appointed bedrooms provide a peaceful retreat, each with easy access to their own stylish bathrooms, ensuring comfort and privacy for all residents.

One of the standout features of this property is the exclusive access to a residents' cinema and lounge, perfect for unwinding after a long day or entertaining friends. The building also offers concierge services, providing an extra layer of convenience and security for its residents.

Hemmingfords



GROSS INTERNAL FLOOR AREA 841 SQ FT



APPROX. GROSS INTERNAL FLOOR AREA 841 SQ FT / 78 SQM		MAINE TOWER	
Disclaimer: Floor plan measurements are approximate and are for illustrative purposes only. While we do not doubt the floor plan accuracy and completeness, you or your advisors should conduct a careful, independent investigation of the property in respect of monetary valuation			
date	09/01/25		



Energy Efficiency Rating		Current	Potential
Very energy efficient - lower running costs			
(92 plus) A			
(81-91) B			
(69-80) C			
(55-68) D			
(39-54) E			
(21-38) F			
(1-20) G			
Not energy efficient - higher running costs			
England & Wales		EU Directive 2002/91/EC	

Agents Note: Whilst every care has been taken to prepare these particulars, they are for guidance purposes only. All measurements are approximate and are for general guidance purposes only and whilst every care has been taken to ensure their accuracy, they should not be relied upon and potential buyers/tenants are advised to recheck the measurements

Hemmingfords Sales
34 Upper Street
London
N1 0PN

02038907470
info@hemmingfords.co.uk
www.hemmingfords.co.uk

Hemmingfords