



AITMAN DRIVE, TW8

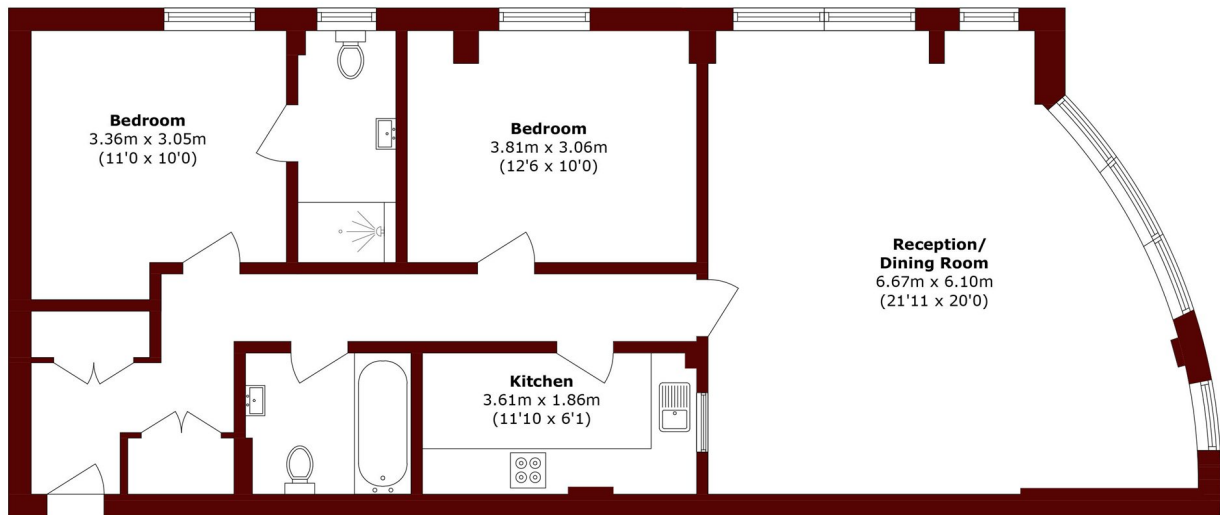
£475,000

Situated in this gated development this immaculately presented two bedroom, two bathrooms apartment comes with allocated parking, a residents gym, a long lease and lift access.

Two bedroom
Two bathroom
Residents gym

Gated allocated parking
Long lease
Energy rating: d

STEP INSIDE AITMAN DRIVE



Total area (approx.): 88.5 sq. m (952.6 sq. ft)

Chiswick
020 8994 2556

Energy Rating: D We aim to make our particulars both accurate and reliable. However, they are not guaranteed; nor do they form part of an offer or contract. If you require clarification on any points then please contact us, especially if you're traveling some distance to view. Please note that appliances and heating systems have not been tested and therefore no warranties can be given as to their good working order

MARSH &
PARSONS