



Peacock Way, Swanwick, Alfreton, DE55 1EQ

Asking Price Of £319,980

SMARTMOVE HOMES are pleased to bring to the market this excellent property in a lovely cul-de-sac in Swanwick briefly comprising of an entrance hallway, sitting/dining room, living room with bi-folding doors into the garden room, downstairs WC and fitted kitchen to the ground floor. To the first-floor landing there are three good sized bedrooms, ensuite/dressing area to master and a modern bathroom suite. Outside there is an enclosed and private garden with ample off road parking leading to a single integral garage. To book a viewing please contact SMARTMOVE HOMES as soon as possible.



Property Description

GROUND FLOOR

Entrance Hallway

Door to the front elevation, laminate floor and radiator.

Sitting / Dining Room

Box bay window to the front elevation, continued laminate floor and radiator.

Living Room

Spacious reception room with electric feature fireplace, two radiators and bi-folding doors providing access to the garden room.

Garden Room

Brick built and double glazed garden room with power, lighting and electric heater.

Kitchen

Modern fitted kitchen with matching wall and base units, quartz worktops with inset one and a half sink and drainer, space and connection for five ring range cooker with extractor over, double oven, integrated dishwasher, space and plumbing for washing machine and tumble dryer, space for tall fridge freezer, tile floor, spotlights, window to the rear elevation and door to the side elevation.

Downstairs WC

WC, wall mounted wash basin, obscure window to the side elevation, tile floor and radiator.

FIRST FLOOR

Landing





Window to the side elevation, access to the airing cupboard and loft, radiator.

Master Bedroom

Large double bedroom with window to the rear elevation, two built in wardrobes and radiator. Provides access to the dressing area.

Dressing Area

Window to the rear elevation and radiator.

Ensuite Shower Room

Modern three piece shower room comprising corner shower cubicle with electric shower over, pedestal wash basin and WC. Obscure window to the rear elevation, extractor fan and fully tiled walls and floor.



Bedroom Two

Double bedroom with window to the front elevation, two built in wardrobes and radiator.

Bedroom Three

Good sized bedroom with window to the front elevation and radiator.

Family Bathroom

Modern family bathroom suite serving the bedrooms.



OUTSIDE

Driveway & Frontage

Block paved driveway providing off road parking for three to four vehicles, leading up to the integral garage.

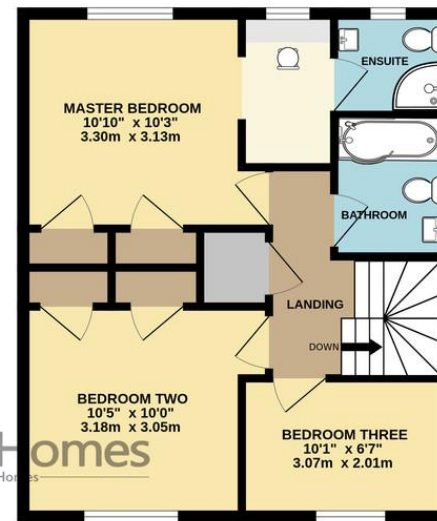
Integral Garage

Single integral garage with manual up and over door, power and lighting.

GROUND FLOOR
661 sq.ft. (61.4 sq.m.) approx.



1ST FLOOR
486 sq.ft. (45.1 sq.m.) approx.



TOTAL FLOOR AREA : 1147 sq.ft. (106.5 sq.m.) approx.

Whilst every attempt has been made to ensure the accuracy of the floorplan contained here, measurements of doors, windows, rooms and any other items are approximate and no responsibility is taken for any error, omission or mis-statement. This plan is for illustrative purposes only and should be used as such by any prospective purchaser. The services, systems and appliances shown have not been tested and no guarantee as to their operability or efficiency can be given.
Made with Metropix ©2026

1 High Street, Ripley,
Derbyshire, DE5 3AA

www.smartmovehomes.co.uk
01773 570055
sales@smartmovehomes.co.uk

Agents Note: Whilst every care has been taken to prepare these sales particulars, they are for guidance purposes only. All measurements are approximate and for general guidance purposes only and whilst every care has been taken to ensure their accuracy, they should not be relied upon and potential buyers are advised to recheck the measurements

