



ROLLOS

♦ solicitors & estate agents ♦



Storage Premises The Beeches, Ladybank, KY15 7LR

Offers Over £25,000



The premises situated within The Beeches would make an ideal storage base or offices offering power and light.

Section into three rooms with shelving and storage cupboards.

Approximate overall sizes is 6.293 x 9.655

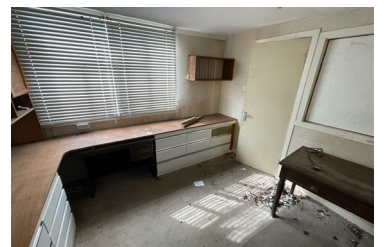
Car port offering covered parking area and further parking to area to the front.

Mains water and drainage are located close to hand. There is mains water inside (a valve).

For more information contact our Cupar office 01334 654081

EPC Rating - C

- Detached unit
- Parking area
- Individual areas with shelving
- Ideal for storage or office space
- Power and light



67 Crossgate, Cupar, Fife, KY15 5AS

Tel: 01334654081 Email: Cupar@rollos.co.uk www.altosoftware.co.uk