



 **3**
Bedrooms

 **1**
Bathroom



Located in Mead Vale, Weston s Mare, this three-bedroom, one-bathroom terraced house offers a practical living space with living room and kitchen/diner. The property has been refurbished, providing a fresh and modern environment for potential buyers. The ground floor consists of a large entrance hall, downstairs cloakroom, spacious sitting room and dining area leading to a modern kitchen, equipped with essential appliances. The kitchen opens to a small garden, offering a private outdoor space for leisure or gardening.

Upstairs, the property features three well-proportioned bedrooms, each providing ample space for furnishings. The bathroom is conveniently located on this floor, designed with modern fixtures and fittings. The house benefits from its position in a popular location, close to local shops and schools, making it suitable for families or professionals.

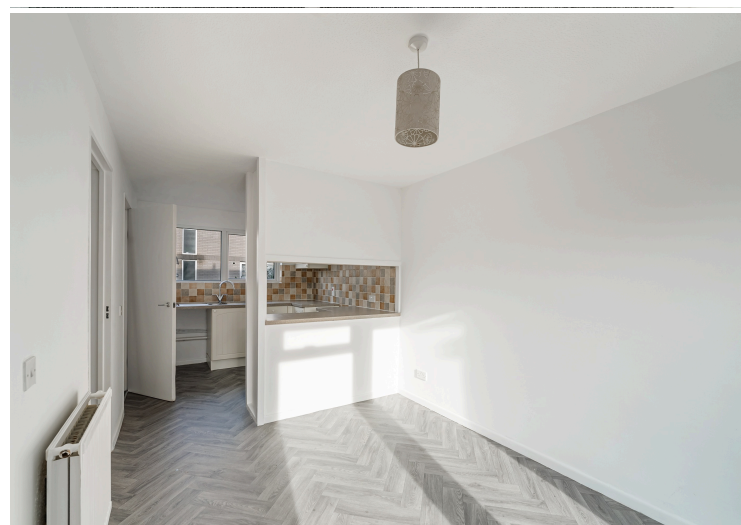
The property falls under the North Somerset Council Tax Band B and has an EPC rating of C, indicating good energy efficiency. It is offered with no onward chain, simplifying the purchasing process for interested buyers.



Mead Vale is a well-connected area with various amenities, including shopping centres, educational institutions, and recreational facilities. Its proximity to Weston s Mare ensures easy access to a wider range of services and transport links.

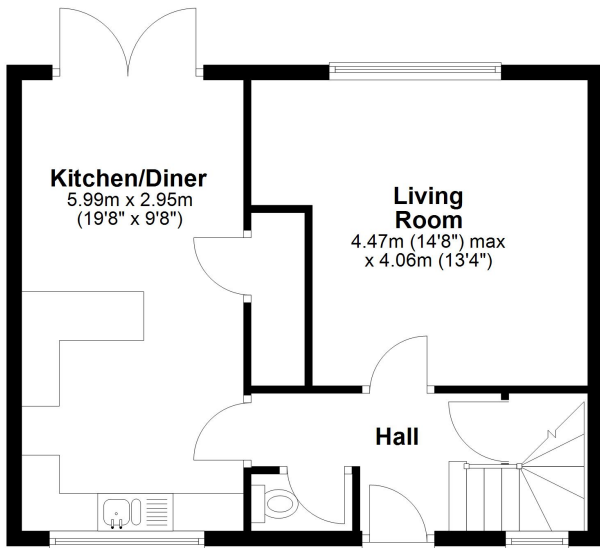
AGENTS NOTE: The seller has advised that they pay a monthly maintenance charge of £16.89 to company Live West for maintenance of communal areas.

- **Mid Terrace House**
- **N Som Council Tax Band B**
- **Popular Location Close To Shops & Schools**
- **Refurbished Accommodation**
- **EPC Rating C**
- **No Onward Chain!**

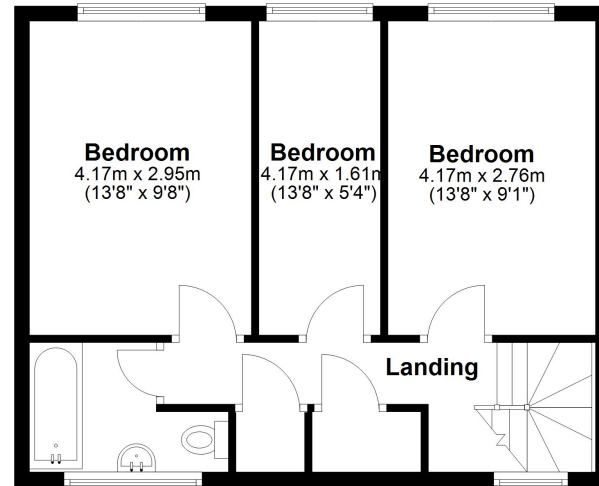




Ground Floor



First Floor



Energy Efficiency Rating		Current	Potential
Very energy efficient - lower running costs			
(92+)	A		
(81-91)	B		
(69-80)	C	73	79
(55-68)	D		
(39-54)	E		
(21-38)	F		
(1-20)	G		
Not energy efficient - higher running costs			
England, Scotland & Wales		EU Directive 2002/91/EC	

Address: Mead Vale, BS22

