



Blackthorn Close, Tadley

£1,250 PCM



Council tax band: C | EPC rating: C

- First floor maisonette
- Two bedrooms
- En suite to master

- Open plan kitchen/ living room
- Modern bathroom
- Two allocated parking spaces

BELVOIR!

Property is personal

Email
tadley.lettings@belvoir.co.uk

Phone
01189 820 333

Located in desirable Baughurst is this well presented two bedroom first floor apartment. The property benefits from a modern finish throughout, open plan kitchen/ living room and two allocated parking spaces.

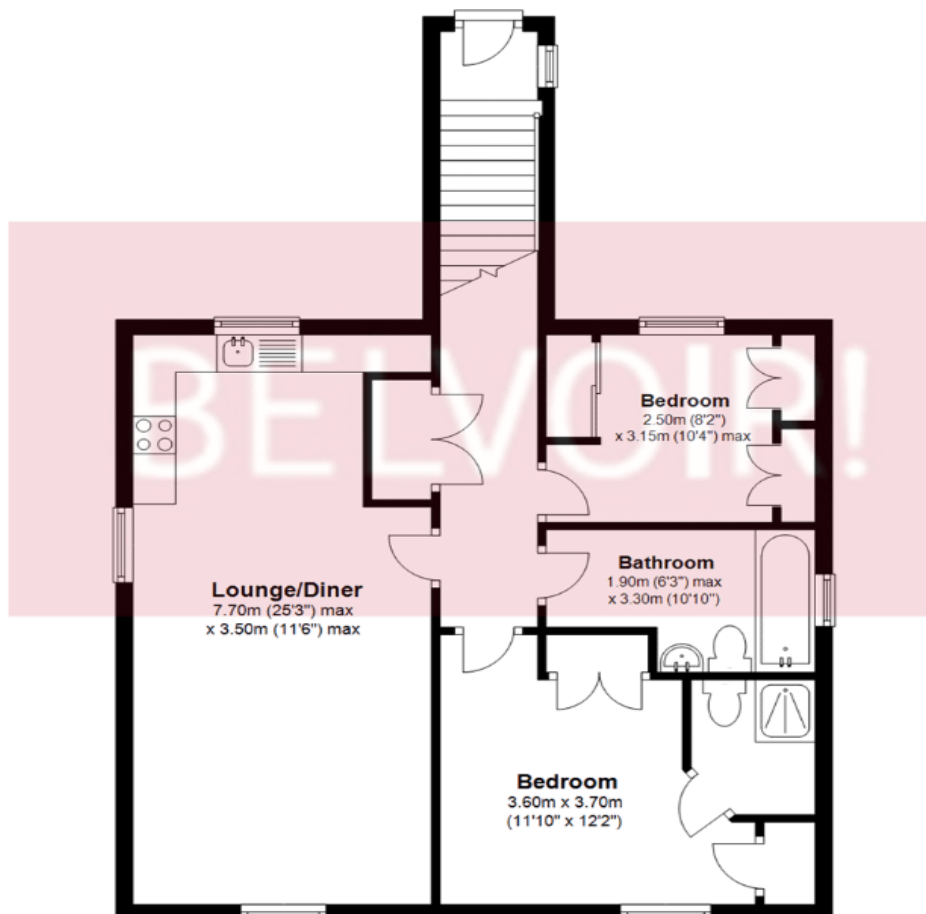
The accommodation comprises: entrance hall with stairs to the first floor, open plan kitchen/ living room with built in electric hob and fan assisted over and integrated fridge/freezer, two bedrooms - each with fitted wardrobes and en suite shower room to the master bedroom and a modern bathroom. Externally there are two allocated parking space.

Available on an unfurnished basis from 24th April 2024.

Please note that all applicants who attend property viewings do at their own risk and must assess any hazards themselves.

Floorplan

Ground Floor



Photographs



