



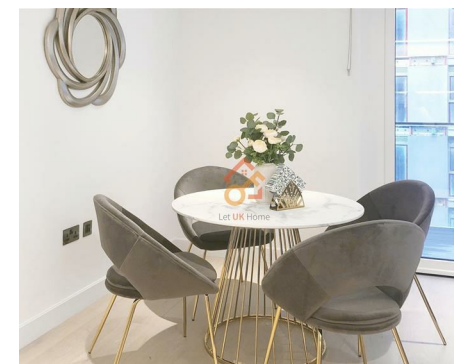
Let **UK** Home

1 Bedrooms

Flat

Located in London

£2,721 Per Month



info@letukhome.co.uk

<https://www.letukhome.co.uk/>

01795 358 886



Fountain Park Way London

W12 7HZ



Let UK Home are excited to offer this spectacular one bedroom apartment in the heart of Bowery Apartment part of the White City Living.

The flat comprises a spacious open kitchen with a stylishly attached dining area, a magnificent living room leading to a large private balcony, one bright bedroom with built-in wardrobes and one modern bathroom.

Residents of this exceptional development will have exclusive use of indoor swimming pool, gymnasium, two 12-seater cinemas, private dining room, residents lounge and rooftop bar. Residents of this exceptional development will also benefit from a concierge and an unrivalled selection of shops, bars, restaurants, leisure facilities and beautiful landscaped courtyards.

White City Living is surrounded by world-class retail, entertainment, education, cultural and commercial venues, and is within walking distance of Europe's largest shopping mall, Westfield, with more than 500 shops, cinemas, restaurants and supermarkets, providing a wealth of shopping, dining and entertainment options to meet residents daily shopping and leisure needs. Not only that, there are many theatres, concert halls, art galleries and museums nearby such as the Design Museum, Leighton House Museum, Shepherd's Bush Empire, Bush Hall and The Bush Theatre, providing residents with a wealth of cultural and entertainment options. In addition, there are a lot of green spaces in the development, and there are Ravenscourt Park and Holand Park nearby, providing residents with great places for leisure and entertainment.

Fountain Park Way London

£2,721 Per Month



- 8th Floor
- Concierge Service
- The Spa
- Cinema & Game Room
- Business Lounge

- Private Balcony
- 24h Security
- The Gym
- Swimming Pool
- EPC Rating: B





Internal measurements	50.5 m ²	544 sq ft
External measurements	5.3 m ²	57 sq ft
Kitchen / Living / Dining	5.11 x 4.69 m	16 ft 9" x 15 ft 4"
Bedroom 1	3.32 x 2.90 m	10 ft 10" x 9 ft 6"
Balcony	3.61 x 1.47 m	11 ft 10" x 4 ft 10"

C: Cupboard U: Utility Cupboard W: Wardrobe W/D: Washer/ Dryer LS: Luggage Storage



Let **UK** Home

3F 2 Eastbourne Terrace
 Paddington
 London
 W2 6LG

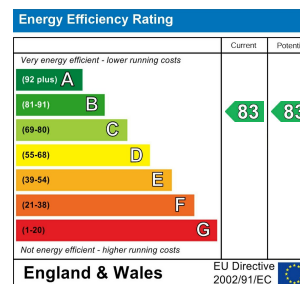
01795 358 886

info@letukhome.co.uk

Council Tax Band: E

Local Authority:

Agents Note: Whilst every care has been taken to prepare these particulars, they are for guidance purposes only. All measurements are approximate and are for general guidance purposes only and whilst every care has been taken to ensure their accuracy, they should not be relied upon and potential buyers/tenants are advised to recheck the measurements.



<https://www.letukhome.co.uk/>