



OVER 60?

Secure this property
for up to **59% less!**

Price

£350,000

Freehold

3x  1x  1x 

**The Conifers, Coldred,
Dover, Kent, CT15**

Wards
Helping you move forwards



Main features

- Welcoming lounge and generous kitchen/diner
- Spacious enclosed rear garden overlooking serene fields
- Plenty of space for vehicles
- 3 good sized bedrooms
- Large plot with scope to extend (subject to necessary planning consents)

Accommodation

Porch
 Entrance Hall
 Lounge: 12'7 x 12'3 (3.84m x 3.74m)
 Lean-to
 Dining Area: 8'7 x 5'6 (2.62m x 1.68m)
 Kitchen: 19'0 x 10'4 (5.80m x 3.15m)
 Inner Hallway
 Utility Area: 8'9 x 5'8 (2.67m x 1.73m)
 Downstairs Toilet

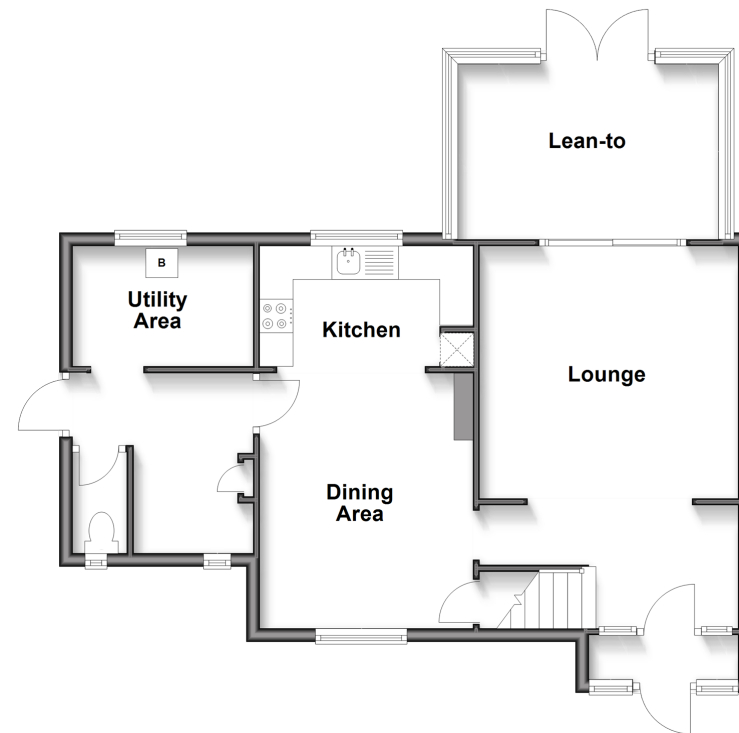
FIRST FLOOR

Landing
 Shower Room: 6'9 x 5'5 (2.06m x 1.65m)
 Bedroom 2: 11'8 x 9'2 (3.56m x 2.80m)
 Bedroom 1: 13'1 x 12'6 (3.99m x 3.81m)
 Bedroom 3: 8'6 x 7'9 (2.59m x 2.36m)

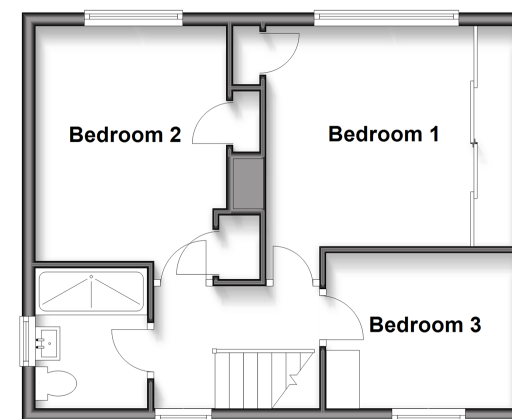
OUTSIDE

Off-Road Parking
 Front and Rear Gardens

Ground Floor
 Approx. 66.2 sq. metres (712.7 sq. feet)



First Floor
 Approx. 41.0 sq. metres (441.3 sq. feet)



Call Dover - 01304 214876 ■ wardsof Kent.co.uk

- Legal advice should be taken to verify fixtures/fittings, planning, alterations and/or lease details
- Appliances & services are untested, dimensions are approximate and floor plans are not to scale
- Through a Homewise Home For Life Plan people aged 60+ can secure this property for up to 59% less, by purchasing a Lifetime Lease.