



Wyesham Road, offers in excess of £315,000

- Popular location
- Well presented accommodation
- Tasteful modern decor
- Living area with French doors to Garden
- Ensuite to main Bedroom
- Drive to Garage
- EPC Rating: Awaited



 3  2  1



About the property

Well presented detached home with comfortable living space, on the edge of modern residential area. Convenient amenities and bus route within the area. Rear garden and garage.

The current owner has lived here since buying this fine ex-show home on the development. A well proportioned design, enjoying pleasant setting, with convenient nearby bus route, local shop and primary school. There is a private gravelled garden area to the front with step up to the front door. The modern tastefully decorated interior comprises; Entrance Hall with Cloakroom having W.C., Kitchen fitted with a range of units comprising cupboards and drawers, integrated oven with gas hob, fridge/freezer, washing machine and dishwasher. Delightful Sitting Room with Dining Area, built-in cupboard, window to rear, along with French doors opening out to the attractive garden.. On the first floor, there are three Bedrooms and a Bathroom. The main Bedroom also benefits from an Ensuite Shower Room. Outside, the rear garden is mainly lawned with planted borders. There is a raised paved terrace to the far end, providing a good area for entertaining. Access via garden gate leads around to the Garage.





Accommodation

Entrance Hall

Cloakroom

Kitchen

9' 9" x 8' 9" (2.97m x 2.67m)

Sitting Room/Dining Area

15' 11" x 16' 6" narrowing to 12' 8" (4.85m x 5.03m
narrowing to 3.86m)

First Floor

Bedroom One

11' 10" x 9' (3.61m x 2.74m)

Ensuite Shower Room

Bedroom 2

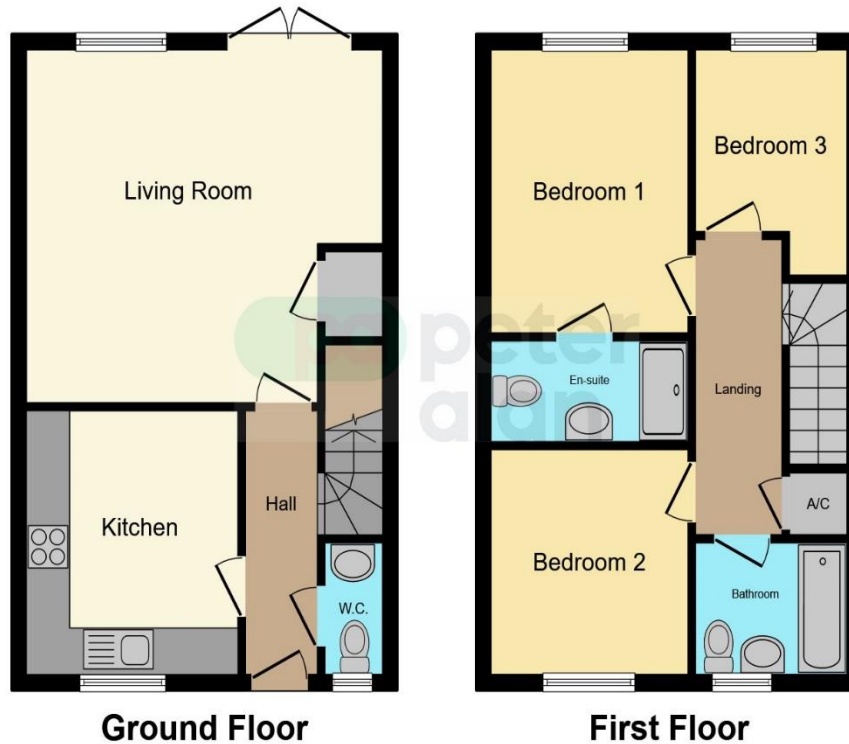
10' 1" x 9' (3.07m x 2.74m)

Bedroom 3

8' 4" plus recess x 7' 1" (2.54m plus recess x 2.16m)

Bathroom

Floorplan



This floor plan is for illustrative purposes only. It is not drawn to scale. Any measurements, floor areas (including any total floor area), openings and orientation are approximate. No details are guaranteed, they cannot be relied upon for any purpose and they do not form part of any agreement. No liability is taken for any error, omission or misstatement. A party must rely upon its own inspection(s). Powered by www.focalagent.com

Important Information

Note while we endeavour to make our sales details accurate and reliable, if there is any point which is of particular interest to you, please contact the office and we will be pleased to confirm the position for you. We have not personally tested any apparatus, equipment, fixtures, fittings or services and cannot verify they are in working order or fit for their purposes. Nothing in these particulars is intended to indicate that carpets or curtains, furnishings or fittings, electrical goods (whether wired or not). Gas fires or light fittings or any other fixtures not expressly included form part of the property offered for sale. This computer generated Floorplan, if applicable, is intended as a general guide to the layout and design of the property. It is not to scale and should not be relied upon for dimensions. Tenure: We cannot confirm the tenure of the property as we have not had access to the legal documents. The buyer is advised to obtain verification from their solicitor or surveyor.

Peter Alan Limited is registered in England and Wales under company number 2073153, Registered Office is Cumbria House, 16-20 Hockliffe Street, Leighton Buzzard, Bedfordshire, LU7 1GN. VAT Registration Number is 500 2481 05. For activities relating to regulated mortgages and non-investment insurance contracts, Peter Alan Limited is an appointed representative of Connells Limited which is authorised and regulated by the Financial Conduct Authority. Connells Limited's Financial Services Register number is 302221. Most buy-to-let