



Price
£475,000

Freehold

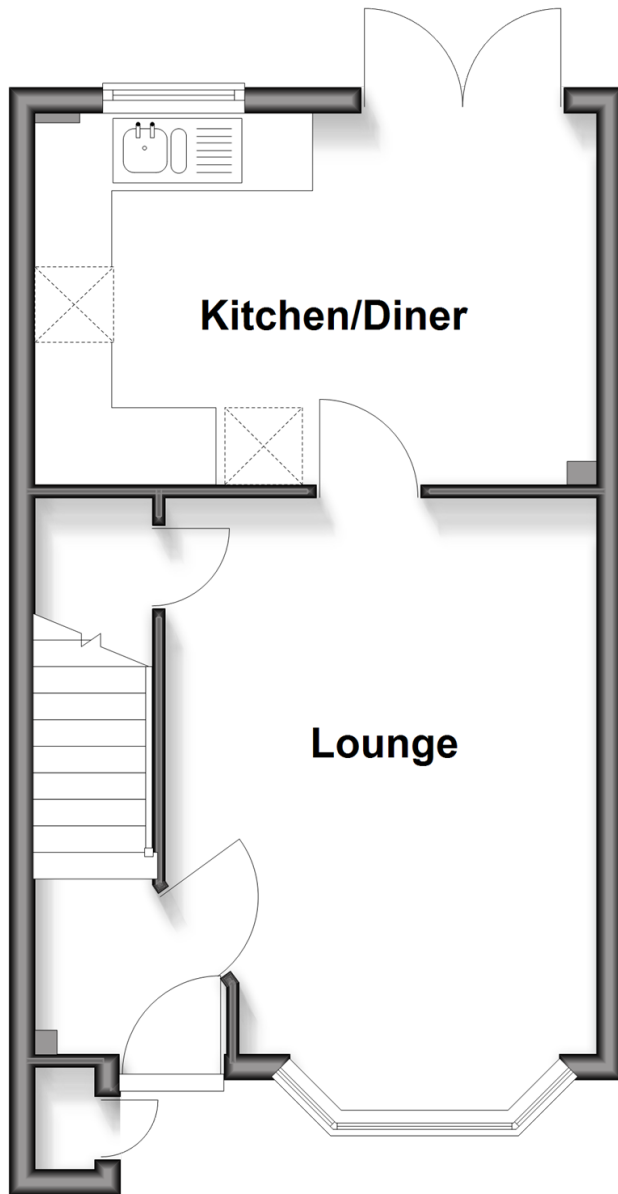
2x  2x  1x 

**Abinger Drive, Redhill,
Surrey, RH1**

cubitt & west
Helping you move forwards

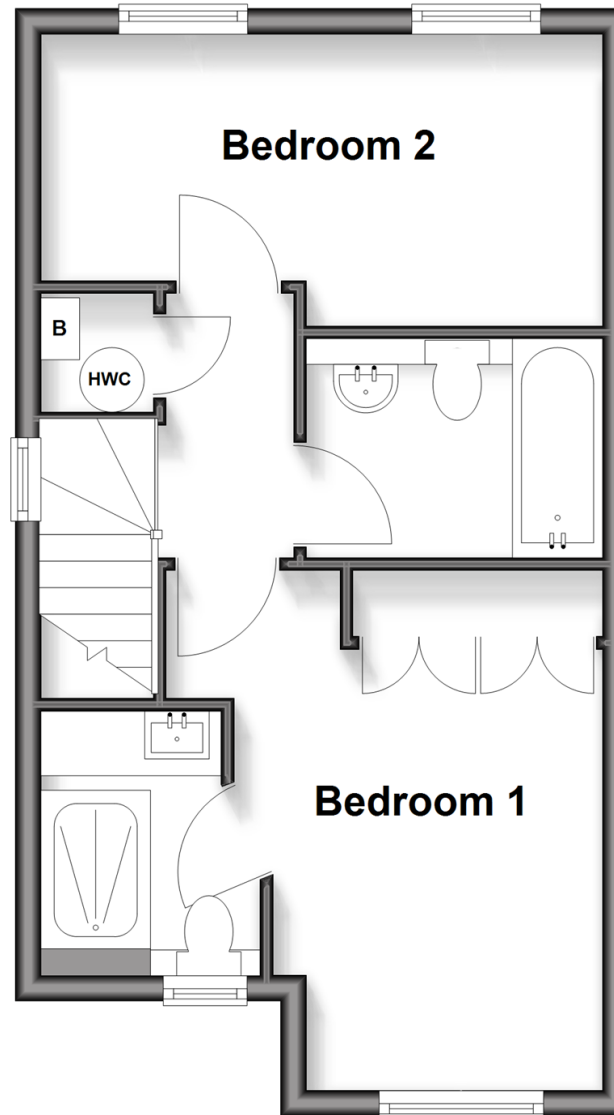
Ground Floor

Approx. 32.1 sq. metres (345.5 sq. feet)



First Floor

Approx. 33.9 sq. metres (364.6 sq. feet)



Accommodation

GROUND FLOOR

Entrance Hall

Lounge: 15'11 x 11'0 (4.85m x 3.36m)

Kitchen/Diner: 14'3 x 9'0 (4.35m x 2.75m)

FIRST FLOOR

Landing

Bedroom 1: 14'1 x 10'11 (4.30m x 3.33m)

En Suite Shower Room

Bedroom 2: 14'4 x 7'5 (4.37m x 2.26m)

Bathroom

OUTSIDE

Driveway

Front Garden

Rear Garden



Main features

- Semi-detached house in a prime spot between Reigate and Redhill
- Long driveway for multiple cars plus ample on-street parking
- Cosmetically updated throughout with a thoughtfully modernised en-suite
- Separate kitchen-dining area
- Bright, airy lounge with attractive bay windows
- Landscaped front and rear gardens



Nearest Schools

Primary Schools: St John's Primary 0.5 miles, St Joseph's Catholic Primary, Redhill 1.3 miles, Salfords Primary 1.3 miles
 Secondary Schools: Reigate School 0.7 miles, Dunottar Day School for Girls 1.4 miles, St Bede's School 1.6 miles



Transport Information

Train Stations: Earlswood 0.8 miles, Redhill 1.3 miles, Reigate 2.1 miles



Address

Abinger Drive, Redhill, Surrey, RH1



Directions

For directions to this property please contact us.



cubitt&west
Helping you move forwards

Call Redhill Branch 01737 778866 ■ cubittandwest.co.uk



■ Legal advice should be taken to verify fixtures/fittings, planning, alterations and/or lease details ■ Appliances & services are untested, dimensions are approximate and floor plans are not to scale



23411685/20260228/JE/JB2