



Guide Price
£400,000

Freehold

3x  2x  1x 

**Sapphire Park, Sutton
Valence, Kent, ME17**

OVER 60?

Secure this property
for up to **59% less!**

Wards
Helping you move forwards



Main features

- Immaculately presented throughout
- Set in a gated development
- Fitted with luxury fixtures & finishes
- Complete with bespoke fitted kitchen with integrated appliances
- 2 Allocated parking spaces and EV car charging port

Accommodation

GROUND FLOOR

Entrance Hall
 Lounge: 16'2 x 10'10 (4.93m x 3.30m)
 Cloakroom
 Kitchen/Diner: 13'0 x 9'9 (3.97m x 2.97m)

FIRST FLOOR

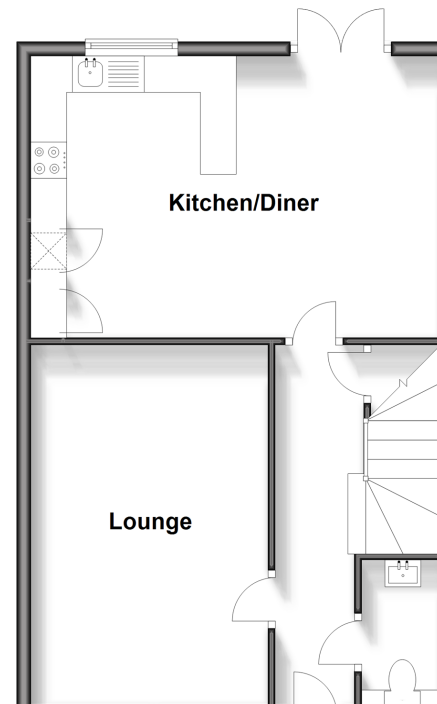
Landing
 Bedroom 1: 11'4 x 10'0 (3.46m x 3.05m)
 En-suite Shower Room
 Bedroom 2: 11'8 x 10'6 (3.56m x 3.20m)
 Bedroom 3: 12'11 x 7'10 (3.94m x 2.39m)
 Bathroom

OUTSIDE

Front and Rear Gardens
 Allocated Parking

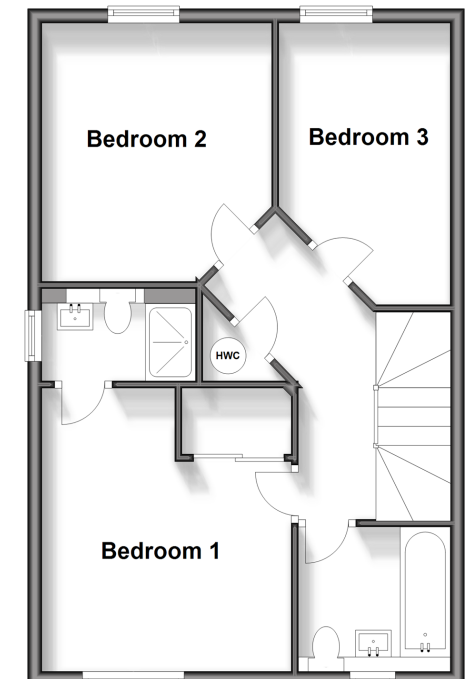
Ground Floor

Approx. 50.9 sq. metres (548.3 sq. feet)



First Floor

Approx. 50.9 sq. metres (548.3 sq. feet)



Call Headcorn - 01622 890435 ■ wardsof Kent.co.uk

■ Legal advice should be taken to verify fixtures/fittings, planning, alterations and/or lease details
 ■ Through a Homewise Home For Life Plan people aged 60+ can secure this property for up to 59% less, by purchasing a Lifetime Lease

■ Appliances & services are untested, dimensions are approximate and floor plans are not to scale



12328947/20260214/SG/HS1