

Wootton Road

ST ANNES

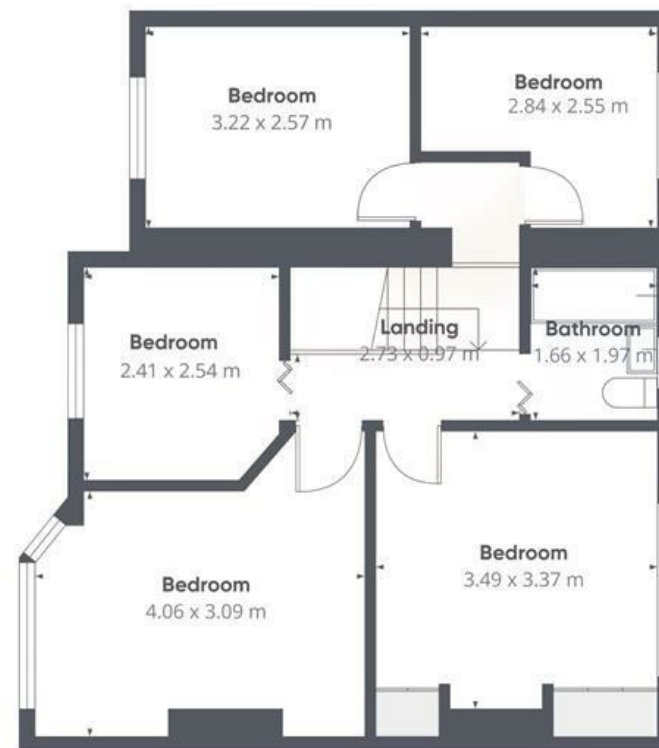
APPROXIMATE FLOOR AREA
121.7 SQM / 1310 SQFT



GROUND FLOOR



FIRST FLOOR



Boardwalk

Wootton Road , BRISTOL



£425,000



4 Bedrooms



BS4 4AL



1 Bathrooms

"There's an effortless sense of space both inside and out, making the home feel open, airy, and welcoming in every season. The conservatory has been a particular highlight perfect for hosting friends or relaxing in the evening bathed in natural light. Step outside and you're moments away from peaceful walks towards the Avon river and woodlands offering a daily escape into nature, while the sweeping views of Troopers Hill provides a view that never fails to impress."

