



# Odhams Walk

London, WC2H

Offers in excess of £500,000

(48 years lease remaining) This spacious and well-presented first floor one bedroom apartment is located in the heart of Covent Garden. Oldham's Walk is a purpose built block securely gated at night. Ideally located for access to the entire West End.

**CHESTERTONS**





# Odhams Walk

## London, WC2H

- Leasehold 48 years remaining
- Purpose built block
- Lift access
- Peaceful yet very central location



Mid-term lease with 48 years remaining. An exceptional one bedroom apartment located on the first floor of Odham's Walk, a well maintained residential development, conveniently positioned just off Long Acre, Neal Street and Shelton Street. This quiet and spacious apartment is presented to the market in an excellent standard. The apartment is surrounded by wealth of restaurants and bars as well as being a short walk to many of the West Ends top attractions. Local transport links include Leicester Square and Covent Garden tube stations.

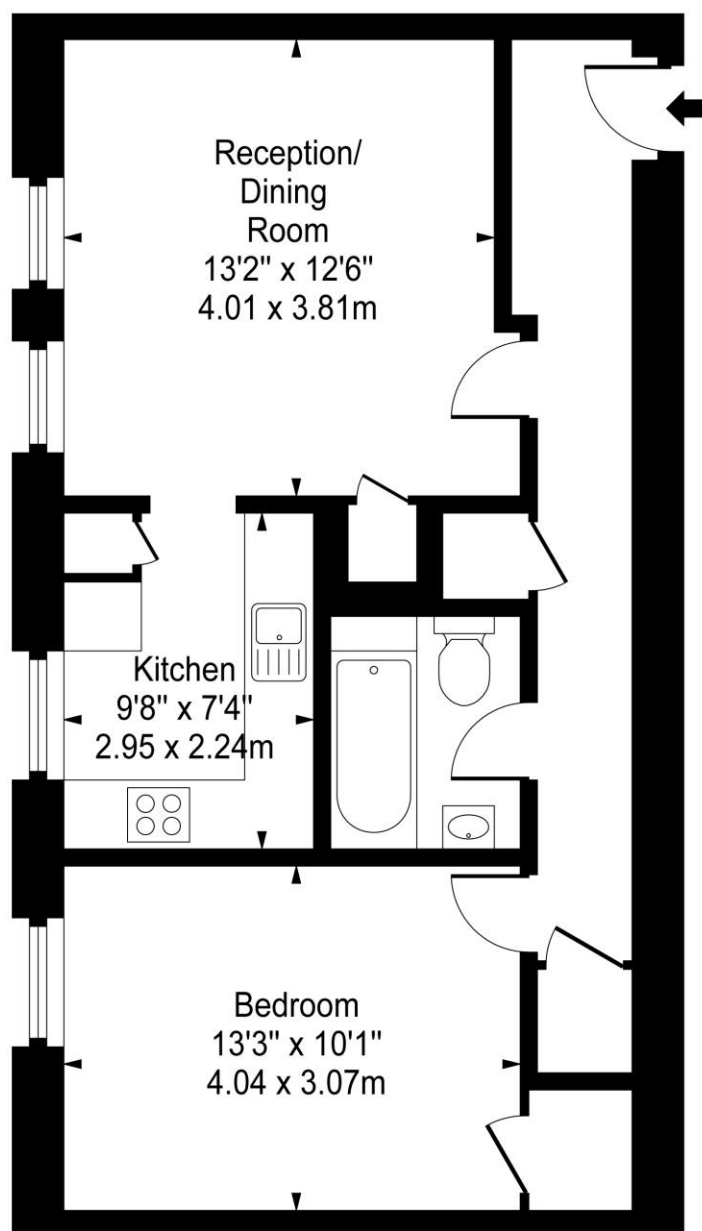
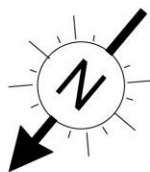
**Tenure:** Leasehold 47 years 1 months  
**Service Charge:** £3070 p.a. (as advised by vendor)  
**Ground Rent:** £10 p.a. (as advised by vendor)  
**Local Authority:** Westminster  
**Council Tax Band:** E

Energy Efficiency Rating		
	Current	Potential
Very energy efficient - lower running costs		
A (94-100)		
B (81-93)		
C (69-80)	77	82
D (55-68)		
E (39-54)		
F (21-38)		
Not energy efficient - higher running costs		
G (1-20)		
England, Scotland & Wales EU Directive 2002/91/EC		

### *Chestertons Covent Garden Sales*

196 Shaftesbury Avenue  
 London  
 WC2H 8JF  
 coventgarden@chestertons.co.uk  
 020 3040 8300  
 chestertons.co.uk

# Odhams Walk



First Floor

Approx Gross Internal Area **563 Sq Ft - 52.30 Sq M**

For Illustration Purposes Only - Not To Scale

[www.goldlens.co.uk](http://www.goldlens.co.uk)

Ref. No. 008673K

