



Guide Price
£300,000

Freehold

2x  1x  1x 

**Hambrook Road,
Holborough Lakes,
Snodland, Kent, ME6**

OVER 60?

Secure this property
for up to **59% less!**

Wards
Helping you move forwards



Main features

- Beautifully presented end of terrace home
- Handy parking space to the rear of the property
- Chain free - so this could be yours sooner than you think
- Prestigious Holborough Lakes development with onsite gym, nursery and lovely walks
- Excellent travel links nearby

Accommodation

GROUND FLOOR

Entrance Hall
 Kitchen: 10'3 x 7'3 (3.13m x 2.21m)
 Cloakroom
 Lounge/Diner: 15'1 x 11'11 (4.60m x 3.63m)

FIRST FLOOR

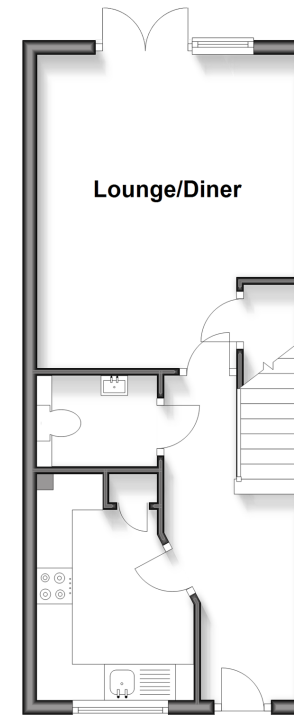
Landing
 Bedroom 1: 11'11 x 11'3 (3.63m x 3.43m)
 Bedroom 2: 12'0 x 9'2 (3.66m x 2.80m)
 Bathroom

OUTSIDE

Front and Rear Gardens
 Allocated Parking Space

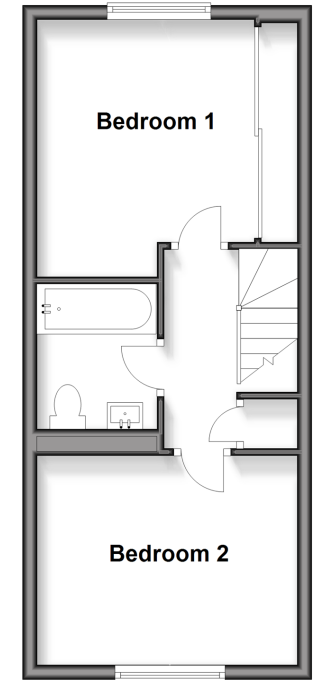
Ground Floor

Approx. 355.1 sq. feet



First Floor

Approx. 352.7 sq. feet



Call Snodland - 01634 245055 ■ wardsofKent.co.uk

■ Legal advice should be taken to verify fixtures/fittings, planning, alterations and/or lease details
 ■ Through a Homewise Home For Life Plan people aged 60+ can secure this property for up to 50% less, by purchasing a Lifetime Lease.

■ Appliances & services are untested, dimensions are approximate and floor plans are not to scale