

**Shaw
& Co**
ESTATE
AGENTS

£575,000

The Alders

Hounslow, TW5 0HP

PROPERTY SUMMARY

A neatly presented three bedroom end of terrace family home ideally situated in the Alders Heston, offering a spacious and well balanced accommodation throughout , perfectly fitted for modern family living.

The ground floor comprises a bright and spacious reception room creating an ideal setting for both relaxing and entertaining. To the rear, a contemporary open plan kitchen and dining area offers excellent space for family living, designed with both practicality and comfort in mind.

To the first floor offers three bedrooms and a family bathroom , completing the upper level. Externally the property benefits from a large rear garden offering significant outdoor space and excellent potential for extension (STPP).

The property presents a fantastic opportunity for first time buyers, growing families or investors looking to add value in a well connected location.

The area is well served by a range of local amenities, shops and supermarkets as well as reputable schools making it an ideal setting. Heathrow Airport and major road links such as A4/M4 are also within easy reach.

Viewing Highly Recommended.

3



1

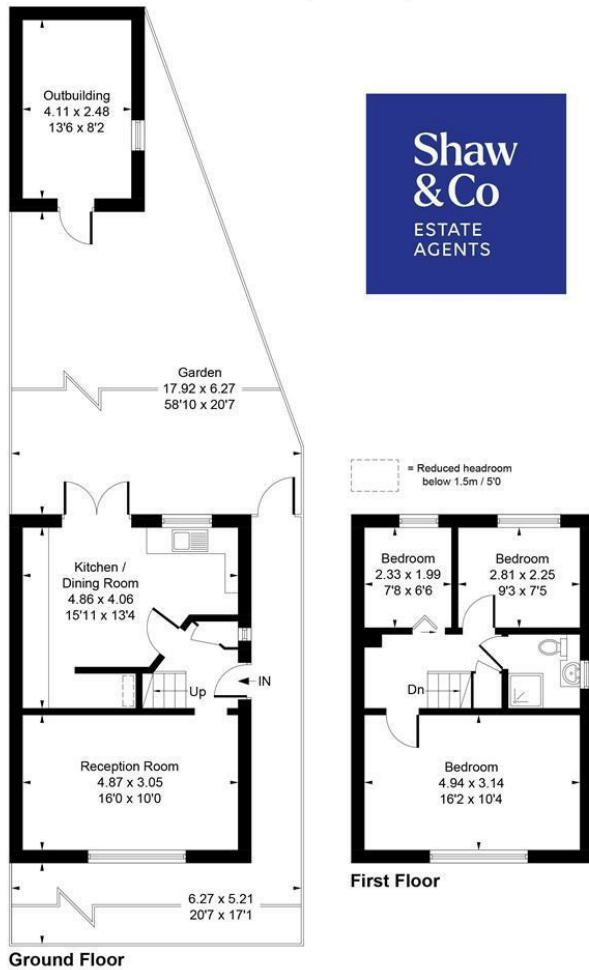


1





Approximate Gross Internal Area = 73.75 sq m / 794 sq ft
 Outbuilding = 10.42 sq m / 112 sq ft
 Total = 84.17 sq m / 906 sq ft



Whilst every attempt has been made to ensure the accuracy of the floor plan contained here, measurements of doors, windows, rooms and any other items are approximate and no responsibility is taken for any error, omission, or mis-statement. This plan is for illustrative purposes only and should be used as such by any prospective purchaser.
 © Vizion Property Marketing Produced for Shaw & Co.

LOCAL AUTHORITY

Hillingdon

TENURE

Freehold

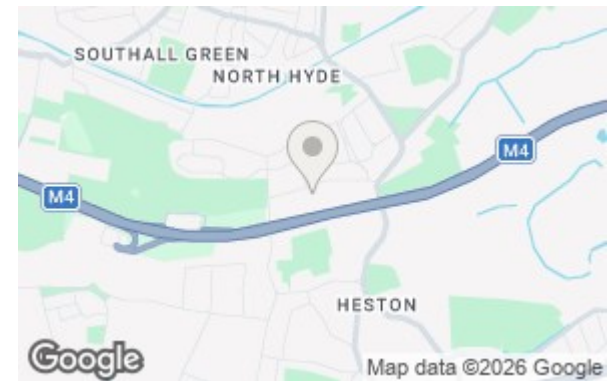
COUNCIL TAX BAND

D

VIEWINGS

By prior appointment only

Energy Efficiency Rating		Current	Potential
Very energy efficient - lower running costs			
(92 plus) A			89
(81-91) B			
(69-80) C		66	
(55-68) D			
(39-54) E			
(21-38) F			
(1-20) G			
Not energy efficient - higher running costs			
England & Wales		EU Directive 2002/91/EC	



Agents Note: Whilst every care has been taken to prepare these particulars, they are for guidance purposes only. All measurements are approximate and are for general guidance purposes only and whilst every care has been taken to ensure their accuracy, they should not be relied upon and potential buyers/tenants are advised to recheck the measurements

Shaw & Co
 ESTATE AGENTS

OFFICE ADDRESS
 10 Central Parade
 New Heston Road
 Heston
 Middlesex
 TW5 0LJ

OFFICE DETAILS
 0208 570 7258
 heston@shawandcoestates.com