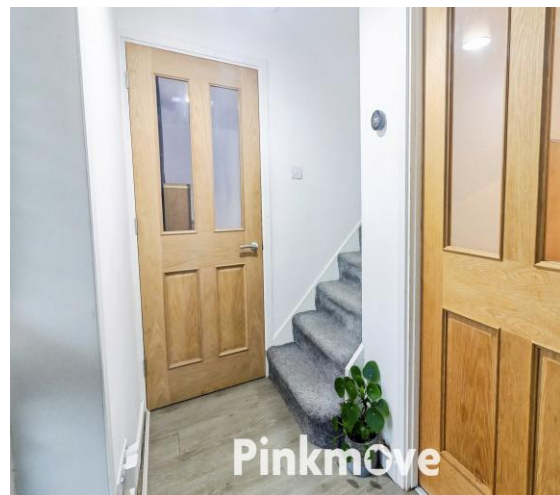




Pinkmove

Radnor Way, Cwmbran guide price £260,000-£270,000

- Two Reception Rooms
- Family Bathroom and Downstairs Wet Room
- Short walk to Cwmbran Town Centre
- Enclosed Rear Garden
- Close to Shops, Schools and Railway Station
- Excellent Transport Links to the M4 motorway network
- EPC Rating: C



 3  2  2

Pinkmove

01633 746088
team@pinkmove.co.uk



Pinkmove

About the property

Immaculately presented and ready to move straight into this detached home is a short walk to Cwmbran town centre with two reception rooms, modern kitchen, wet room, and enclosed garden. Close to schools, shops, and excellent transport links.



Pinkmove



Pinkmove



Pinkmove



Pinkmove



Pinkmove



Pinkmove

Accommodation

Living Room

9' 8" x 12' 3" (2.95m x 3.73m)

Dining Room

7' 11" x 12' 1" (2.41m x 3.68m)

Kitchen

14' 3" x 9' 6" (4.34m x 2.90m)
Max Measurements

Downstairs Shower Room

6' 7" x 7' 2" (2.01m x 2.18m)
Max Measurements

Bedroom 1

9' 9" x 12' 2" (2.97m x 3.71m)

Bedroom 2

9' 4" x 12' 2" (2.84m x 3.71m)
Max Measurements

Bedroom 3

9' 4" x 6' 10" (2.84m x 2.08m)

Bathroom

5' 5" x 9' 9" (1.65m x 2.97m)

Floorplan

Ground Floor

Approx. 44.2 sq. metres (476.1 sq. feet)



First Floor

Approx. 39.1 sq. metres (420.7 sq. feet)



Total area: approx. 83.3 sq. metres (896.8 sq. feet)

21 Radnor Way

Important Information

Note while we endeavour to make our sales details accurate and reliable, if there is any point which is of particular interest to you, please contact the office and we will be pleased to confirm the position for you. We have not personally tested any apparatus, equipment, fixtures, fittings or services and cannot verify they are in working order or fit for their purposes. Nothing in these particulars is intended to indicate that carpets or curtains, furnishings or fittings, electrical goods (whether wired or not). Gas fires or light fittings or any other fixtures not expressly included form part of the property offered for sale. This computer generated Floorplan, if applicable, is intended as a general guide to the layout and design of the property. It is not to scale and should not be relied upon for dimensions. Tenure: We cannot confirm the tenure of the property as we have not had access to the legal documents. The buyer is advised to obtain verification from their solicitor or surveyor.

Peter Alan Limited is registered in England and Wales under company number 2073153, Registered Office is Cumbria House, 16-20 Hockliffe Street, Leighton Buzzard, Bedfordshire, LU7 1GN. VAT Registration Number is 500 2481 05. For activities relating to regulated mortgages and non-investment insurance contracts, Peter Alan Limited is an appointed representative of Connells Limited which is authorised and regulated by the Financial Conduct Authority. Connells Limited's Financial Services Register number is 302221. Most buy-to-let