



Shade Apartments Beech Avenue, SOUTH CROYDON CR2 0NN

welcome to

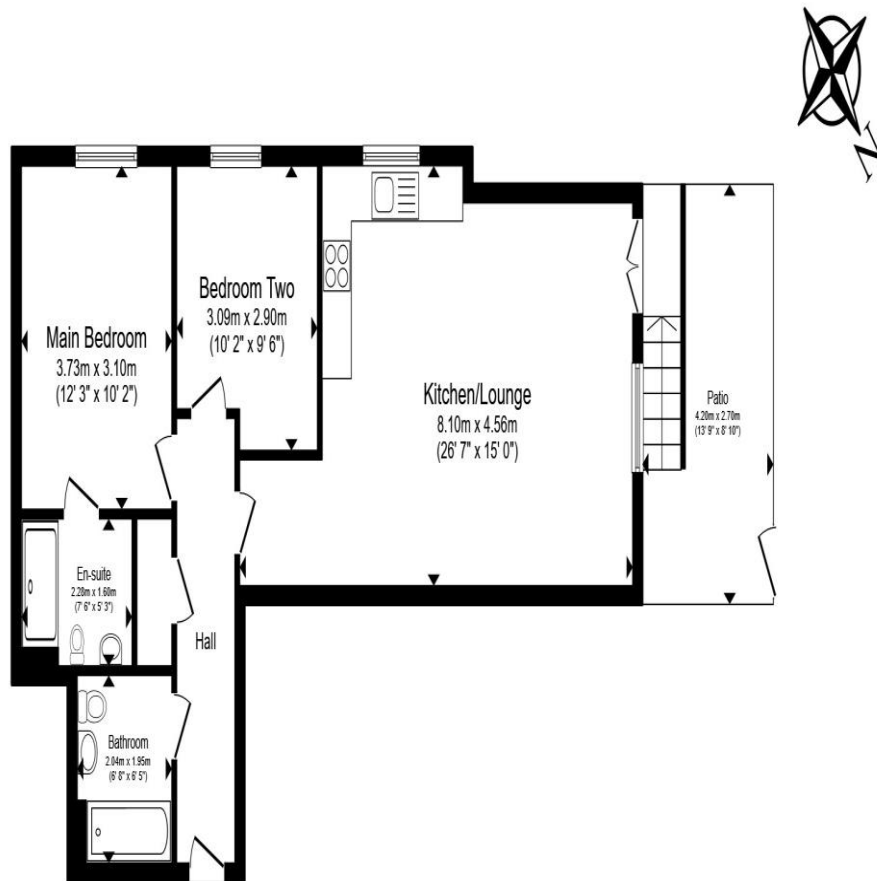
Shade Apartments Beech Avenue, SOUTH CROYDON

Bright & modern ground floor apartment with private patio and allocated parking.

This modern ground floor apartment, built in 2021, offers well-designed and contemporary living accommodation throughout. The property comprises two generous double bedrooms, with the principal bedroom benefiting from a stylish en suite bathroom, in addition to a second well-appointed family bathroom.

The open plan kitchen and living area provides a bright and sociable space, ideal for both everyday living and entertaining, with direct access to a private patio. Residents also enjoy use of a communal garden, perfect for relaxing outdoors, along with the convenience of an allocated parking space with EV charging.





Floor Plan

Total floor area 66.8 m² (719 sq.ft.) approx

This floor plan is for illustrative purposes only. It is not drawn to scale. Any measurements, floor areas (including any total floor area), openings and orientation are approximate. No details are guaranteed, they cannot be relied upon for any purpose and they do not form part of any agreement. No liability is taken for any error, omission or misstatement. A party must rely upon its own inspection(s). Powered by www.propertybox.io



Beech Avenue, is a quiet and desirable residential road, well positioned for the amenities of South Croydon and the surrounding areas. The location benefits from excellent transport links, with two stations nearby stations providing regular services into London Bridge & Victoria in less than 30 minutes, making it ideal for commuters. A variety of shops, cafés and restaurants are close at hand, while several green spaces and parks in the area including Wettren Tree Gardens and Purley Beeches directly opposite the building offer opportunities for walking, exercise and leisure. The property is also well served by reputable schools and local services, combining a peaceful setting with everyday convenience.

welcome to

Shade Apartments Beech Avenue, SOUTH CROYDON

- Ground Floor Apartment - Built in 2021
- Two Double Bedrooms
- Two Bathrooms (One En-suite)
- Open Plan Kitchen/Living
- Private Patio

Tenure: Leasehold EPC Rating: B

Council Tax Band: D Service Charge: 1107.00

Ground Rent: 415.00

This is a Leasehold property with details as follows; Term of Lease 118 years from 31 Dec 2025.
Should you require further information please contact the branch. Please Note additional fees could be incurred for items such as Leasehold packs.

£395,000



Please note the marker reflects the postcode not the actual property

check out more properties at barnardmarcus.co.uk



Property Ref:
SAN107957 - 0004

1. MONEY LAUNDERING REGULATIONS Intending purchasers will be asked to produce identification documentation at a later stage and we would ask for your co-operation in order that there is no delay in agreeing the sale. 2. These particulars do not constitute part or all of an offer or contract. 3. The measurements indicated are supplied for guidance only and as such must be considered incorrect. Potential buyers are advised to recheck measurements before committing to any expense. 4. We have not tested any apparatus, equipment, fixtures or services and it is in the buyers interest to check the working condition of any appliances. 5. Where an EPC, or a Home Report (Scotland only) is held for this property, it is available for inspection at the branch by appointment. If you require a printed version of a Home Report, you will need to pay a reasonable production charge reflecting printing and other costs. 6. We are not able to offer an opinion either written or verbal on the content of these reports and this must be obtained from your legal representative. 7. Whilst we take care in preparing these reports, a buyer should ensure that his/her legal representative confirms as soon as possible all matters relating to title including the extent and boundaries of the property and other important matters before exchange of contracts.

Barnard Marcus is a trading name of Sequence (UK) Limited which is registered in England and Wales under company number 4268443, Registered Office is Cumbria House, 16-20 Hockliffe Street, Leighton Buzzard, Bedfordshire, LU7 1GN. VAT Registration Number is 500 2481 05.



barnard marcus



020 8651 6363



Sanderstead@barnardmarcus.co.uk



Station Approach, Sanderstead, South Croydon, Surrey, CR2 0PL



barnardmarcus.co.uk