

Ridgeway Close

A new standard of living





A boutique collection of distinguished country homes in the heart of the Chilterns

Ridgeway Close offers a rare and privileged opportunity to own a beautifully crafted new home in one of Hertfordshire's most desirable semi-rural settings. Perfectly balancing country calm with city connections. These homes are designed for modern families, professionals and downsizers who value space, style and quality.

Mile Barn Farm, Hemel Hempstead Road,
Dagnall, Berkhamsted HP4 1QR

The Development

Nestled within the former grounds of Mile Barn Farm, Ridgeway Close is an exclusive enclave of just nine detached luxury homes, thoughtfully designed to complement their spectacular setting. Surrounded by rolling open countryside and commanding uninterrupted views across the Chiltern Hills, this is a place where timeless elegance meets modern comfort.

Each home is individually crafted, blending classic architectural detail with contemporary interiors, generous proportions, and meticulous attention to detail. With spacious private plots, landscaped surroundings and a specification that sets a new benchmark for quality.

Ridgeway Close represents country living at its most refined.

Set at the end of a private close, the development enjoys a rare sense of seclusion and tranquillity, while remaining superbly connected to Berkhamsted, Hemel Hempstead and Tring.

Here, residents can enjoy the serenity of nature on their doorstep without sacrificing everyday convenience.





About the location

The charming village of Dagnall sits on the edge of the Chilterns Area of Outstanding Natural Beauty – an unspoilt landscape offering endless opportunities for walking, cycling, and outdoor pursuits. Traditional country pubs, farm shops and welcoming village communities surround the area. While the historic market town of Berkhamsted is just a short drive away, with its boutique shopping, fine dining and vibrant café culture.

For families, the area boasts an excellent choice of state and independent schools, alongside an array of leisure opportunities from golf and equestrian facilities to the majestic Ashridge Estate, with its ancient woodlands and far-reaching views.

Travel and connections

Despite its rural setting, Ridgeway Close is ideally placed for commuters. Berkhamsted station provides fast, direct services into London Euston in under 40 minutes. By road, the A41, M1, and M25 are all within easy reach, ensuring swift access into the capital and beyond. Luton Airport is just 12 miles away, while Heathrow and Stansted can both be reached in under an hour.



Ridgeway Close

◀ Tring

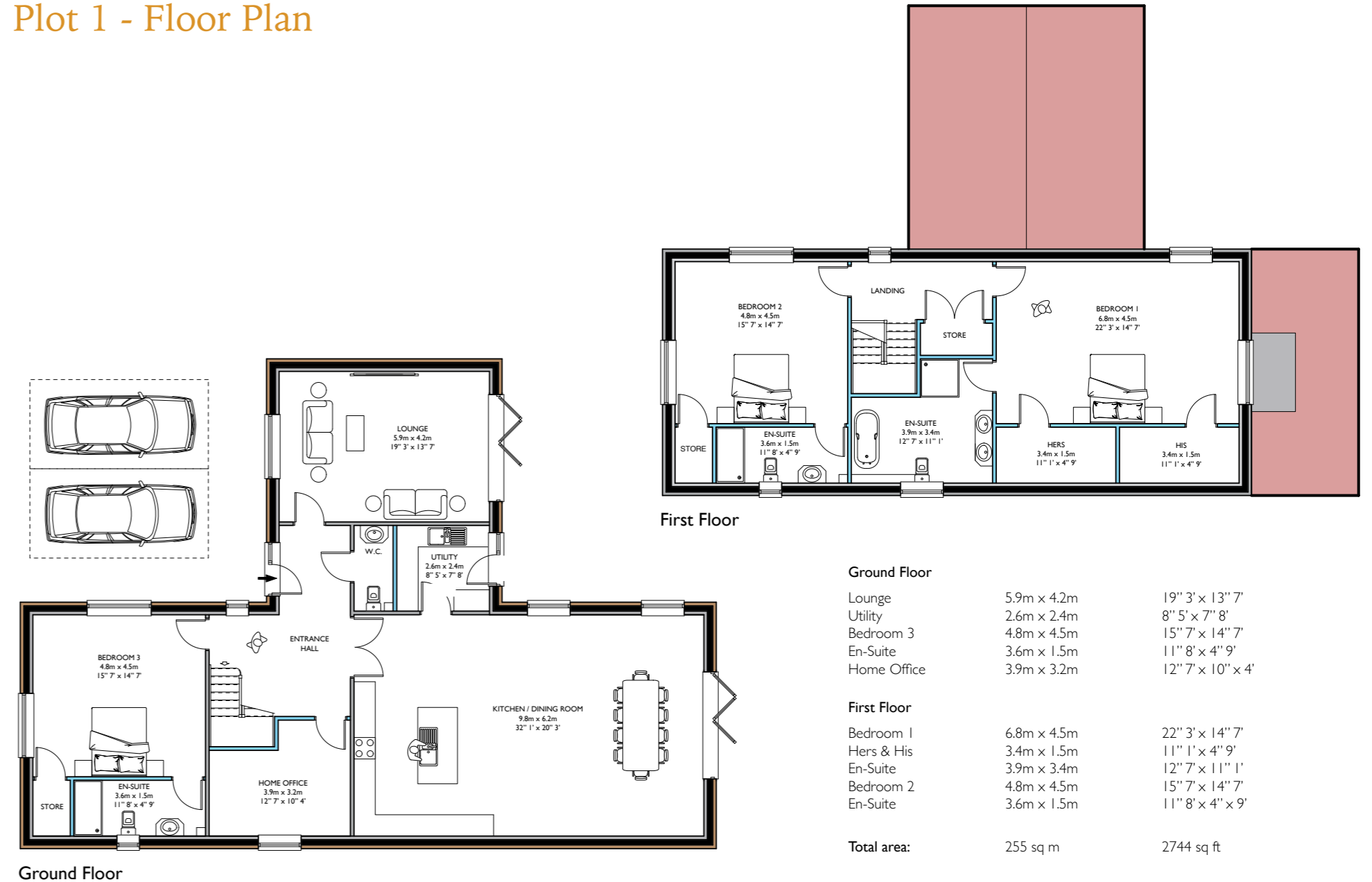
National Trust
Ashridge Estate



Plot 1



Plot 1 - Floor Plan

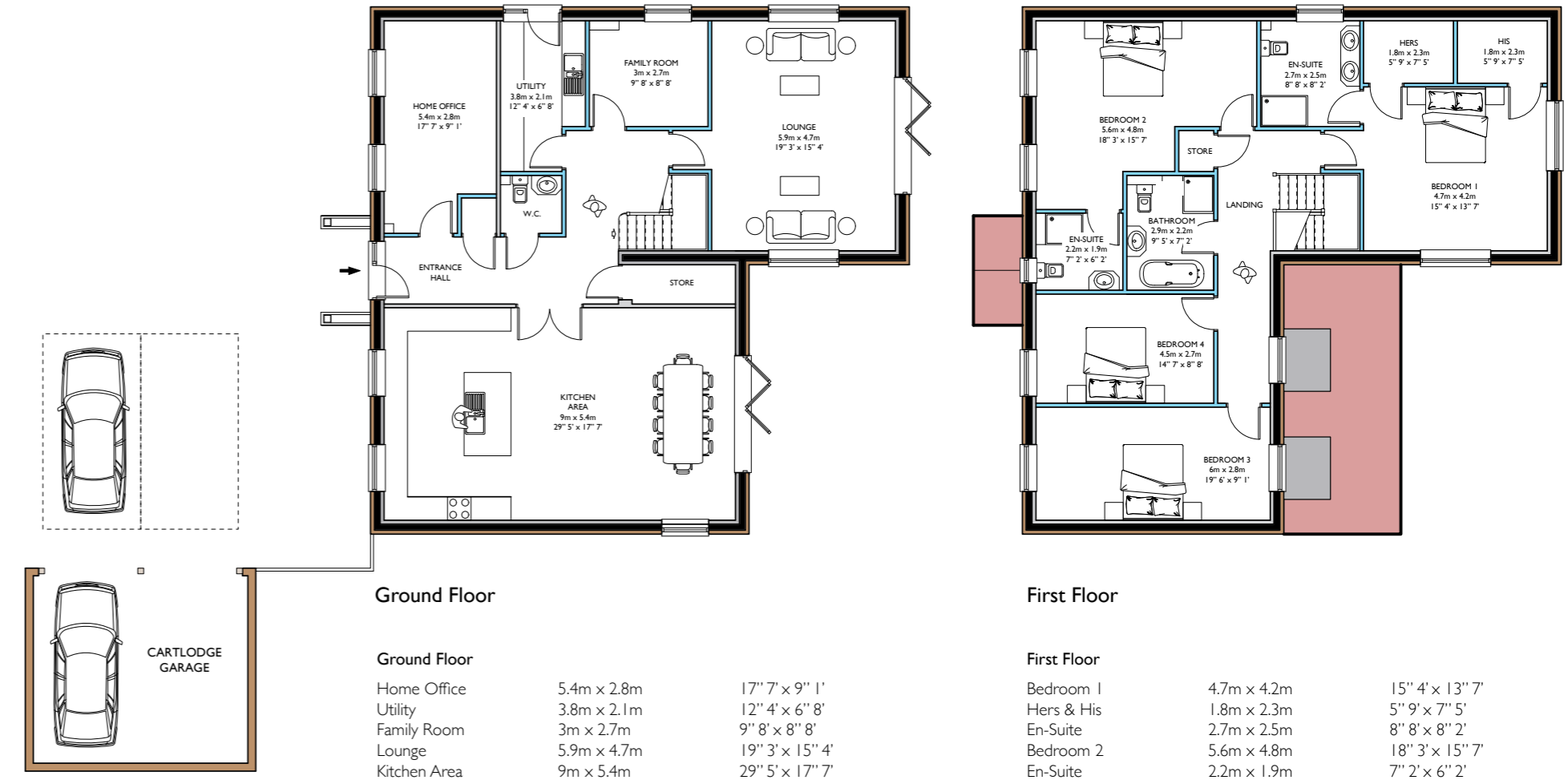


*Approx measurements, floor plans can be subject to change.

Plot 2



Plot 2 - Floor Plan

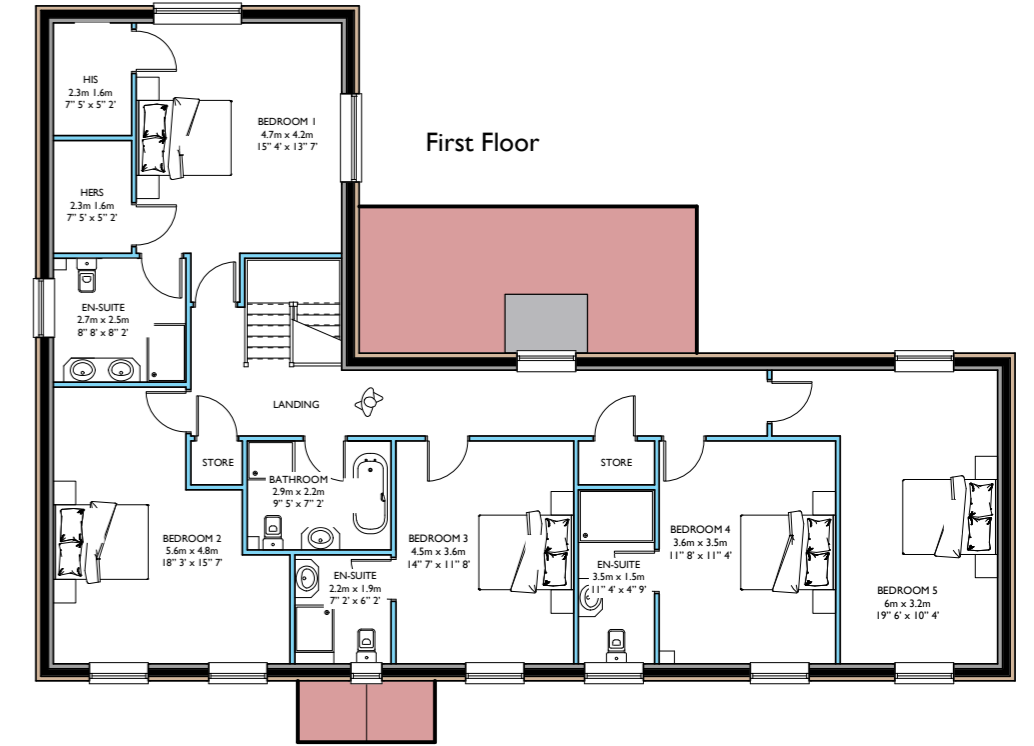
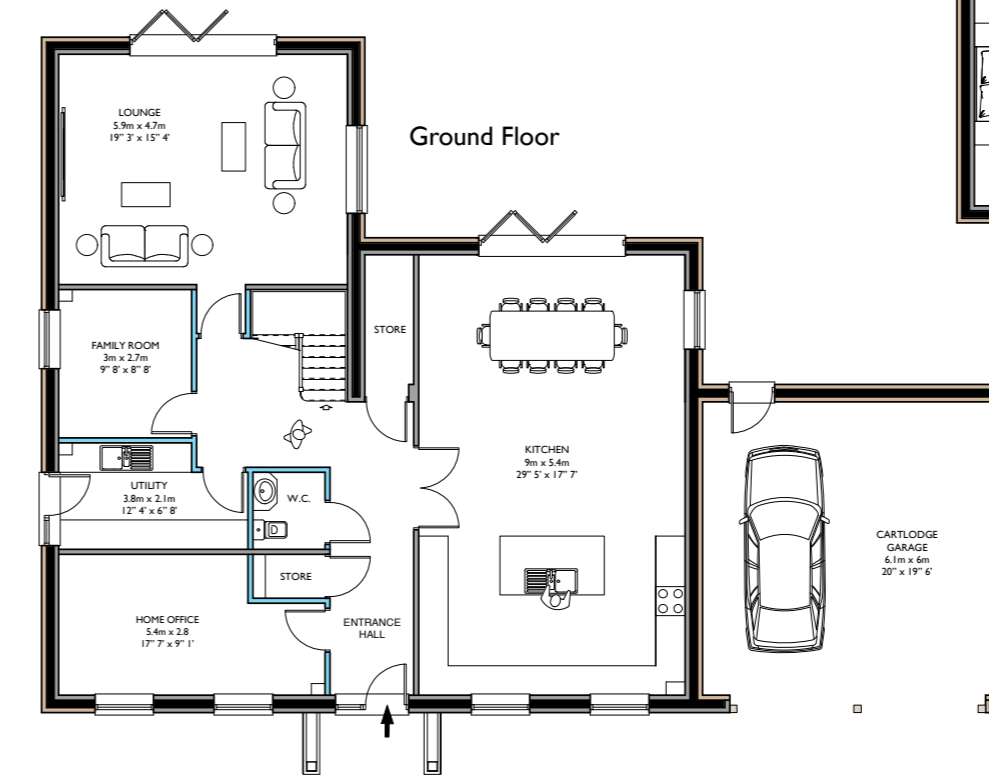


*Approx measurements, floor plans can be subject to change.

Plot 4



Plot 4 - Floor Plan



Ground Floor		
Lounge	5.9m x 4.7m	19' 3" x 15' 4"
Family Room	3m x 2.7m	9' 8" x 8' 8"
Utility	3.8m x 2.1m	12' 4" x 6' 8"
Home Office	5.4m x 2.8m	17' 7" x 9' 1"
Kitchen	9m x 5.4m	29' 5" x 17' 7"
Cartlodge Garage	6.1m x 6m	20" x 19' 6"
First Floor		
Bedroom 1	4.7m x 4.2m	15' 4" x 13' 7"
Hers & His	2.3m x 1.6m	7' 5" x 5' 2"
En-Suite	2.7m x 2.5m	8' 8" x 8' 2"
Bedroom 2	5.6m x 4.8m	18' 3" x 15' 7"
Bathroom	2.9m x 2.2m	9' 5" x 7' 2"
Bedroom 3	4.5m x 3.6m	14' 7" x 11' 8"
En-Suite	2.2m x 1.9m	7' 2" x 6' 2"
Bedroom 4	3.6m x 3.5m	11' 8" x 11' 4"
En-Suite	3.5m x 1.5m	11' 4" x 4' 9"
Bedroom 5	6m x 3.2m	19' 6" x 10' 4"

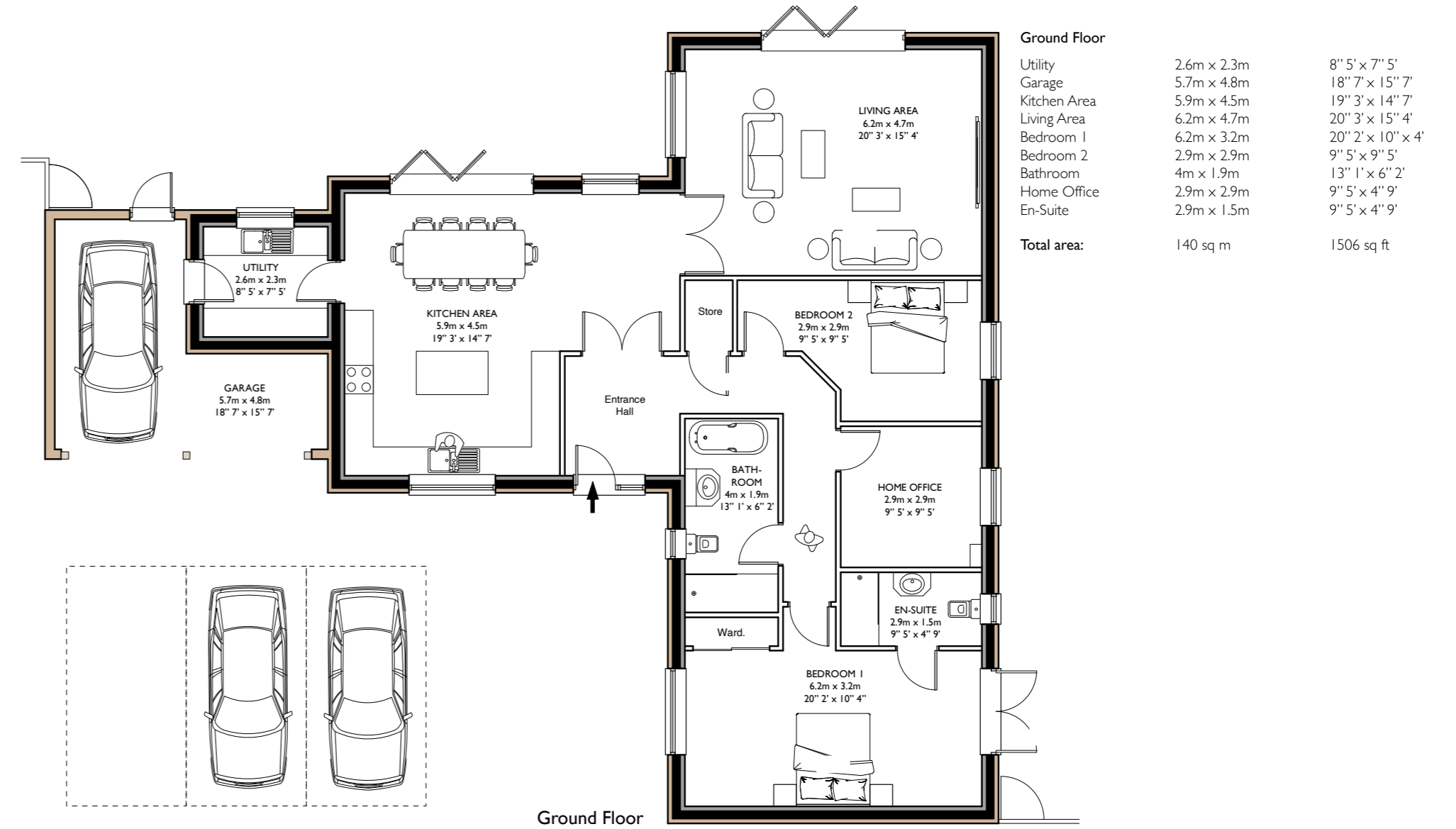
Total area:
297 sq m
3196 sq ft

*Approx measurements, floor plans can be subject to change.

Plot 5



Plot 5 - Floor Plan



*Approx measurements, floor plans can be subject to change.

Plot 6



Plot 6 - Floor Plan



Ground Floor

*Approx measurements, floor plans can be subject to change.

Plot 7



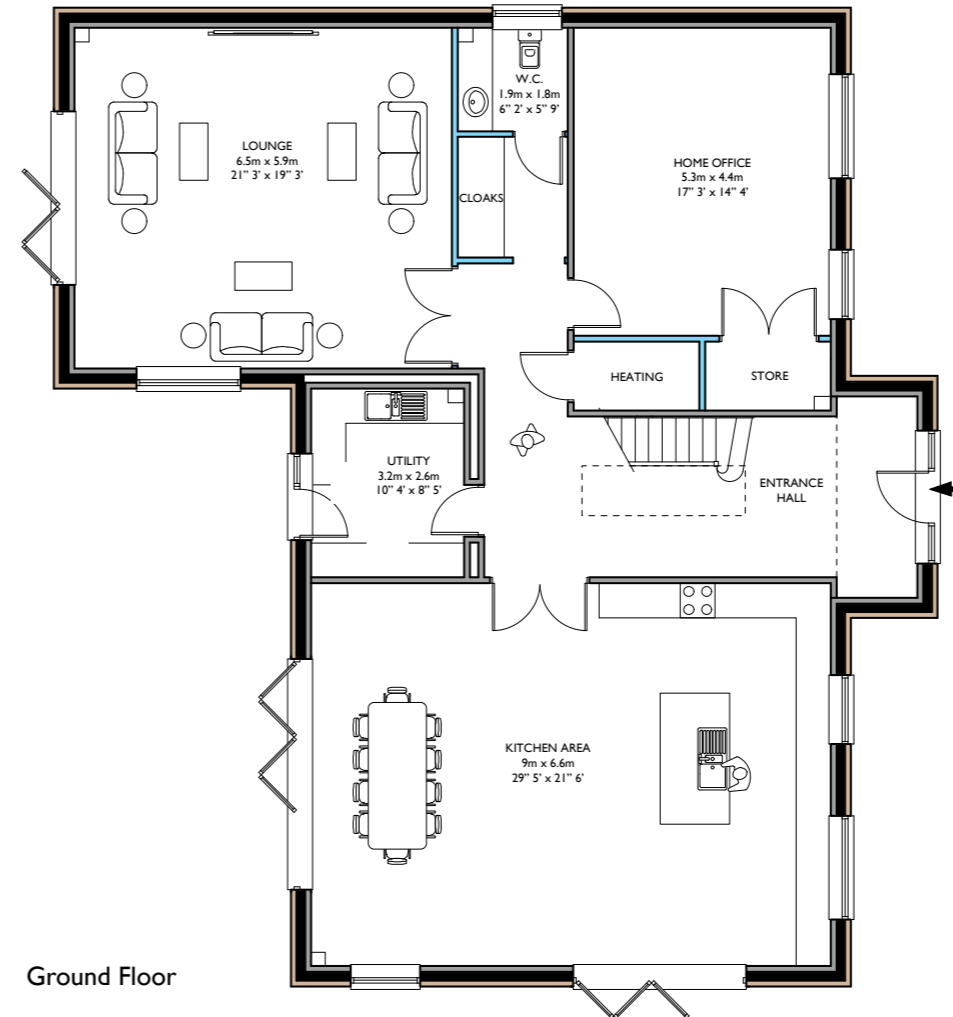
Plot 7 - Floor Plan

Ground Floor

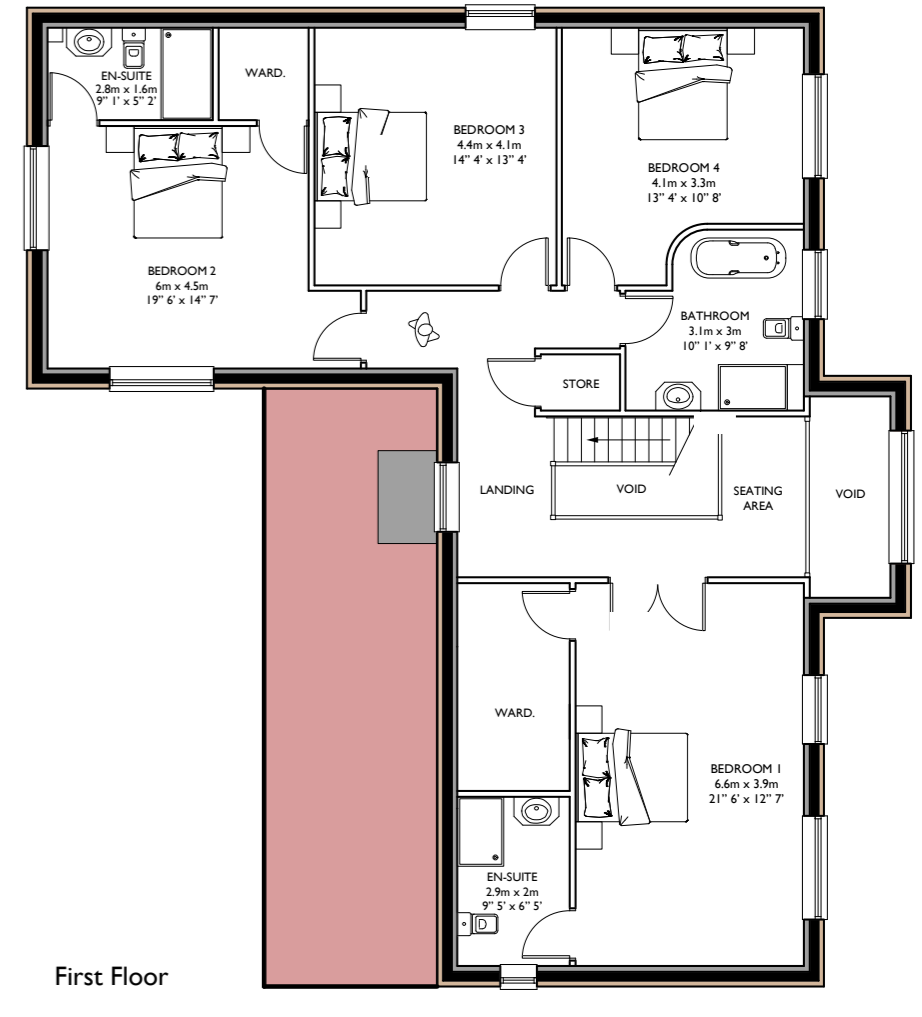
Lounge	6.5m x 5.9m	21' 3" x 19' 3"
Utility	3.2m x 2.6m	10' 4" x 8' 5"
Kitchen Area	9m x 6.6m	29' 5" x 21' 6"
Home Office	5.3m x 4.4m	17' 3" x 14' 4"
W.C.	1.9m x 1.8m	6' 2" x 5' 9"

First Floor

Bedroom 1	6.6m x 3.9m	21' 6" x 12' 7"
En-Suite	2.9m x 2m	9' 5" x 6' 5"
Bedroom 2	6m x 4.5m	19' 6" x 14' 7"
En-Suite	2.8m x 1.6m	9' 1" x 5' 2"
Bedroom 3	4.4m x 4.1m	14' 4" x 13' 4"
Bedroom 4	4.1m x 3.3m	13' 4" x 10' 8"
Bathroom	3.1m x 3m	10' 1" x 9' 8"
Total area:	321 sq m	3454 sq ft



Ground Floor



First Floor

*Approx measurements, floor plans can be subject to change.

Plot 8



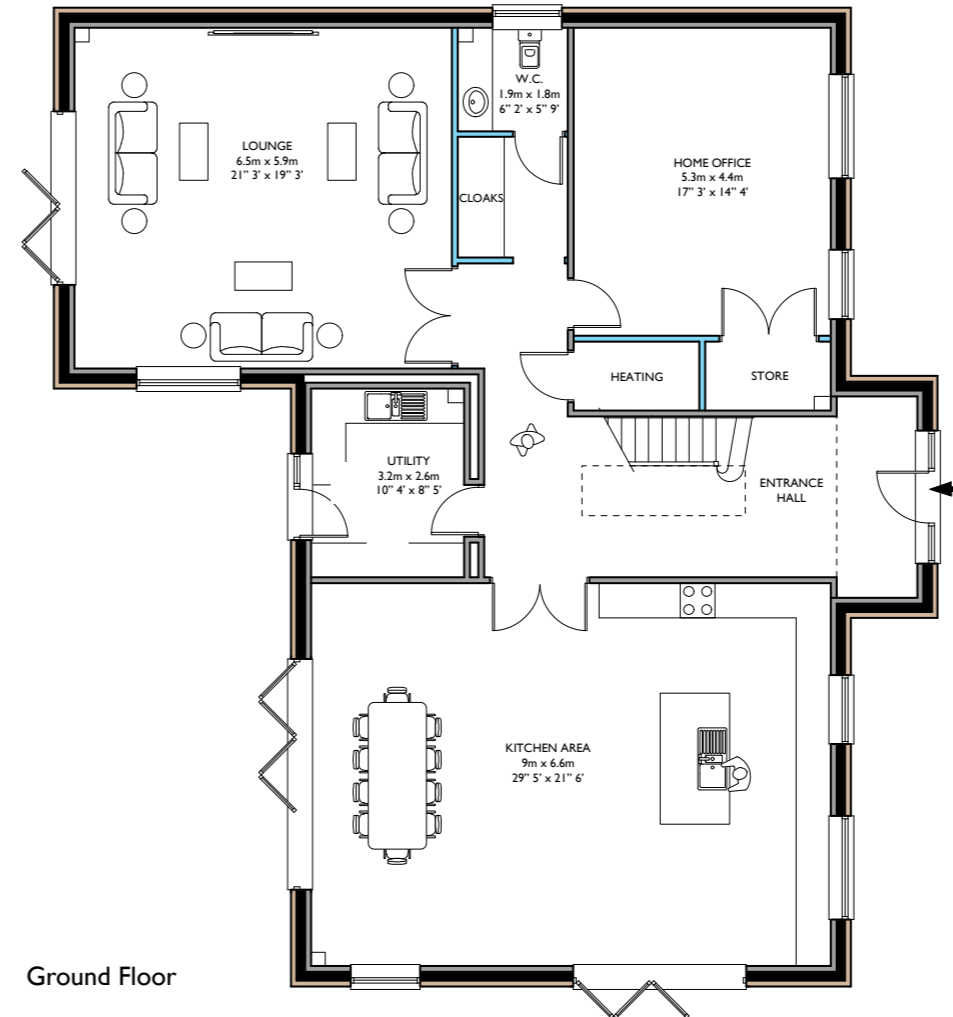
Plot 8 - Floor Plan

Ground Floor

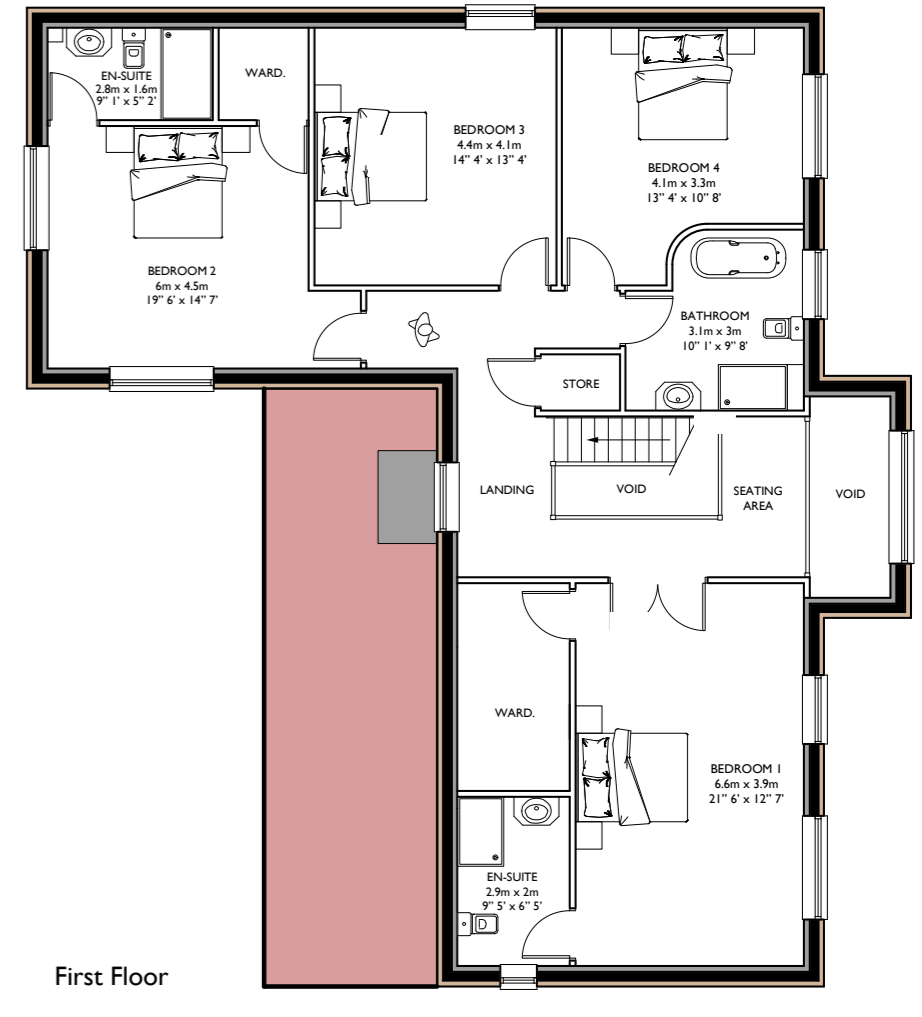
Lounge	6.5m x 5.9m	21' 3" x 9" 3"
Utility	3.2m x 2.6m	10' 4" x 8" 5"
Kitchen Area	9m x 6.6m	29' 5" x 21" 6"
Home Office	5.3m x 4.4m	17' 3" x 14" 4"
W.C.	1.9m x 1.8m	6" 2" x 5" 9"

First Floor

Bedroom 1	6.6m x 3.9m	21' 6" x 12' 7"
En-Suite	2.9m x 2m	9' 5" x 6' 5"
Bedroom 2	6m x 4.5m	19' 6" x 14' 7"
En-Suite	2.8m x 1.6m	9' 1" x 5' 2"
Bedroom 3	4.4m x 4.1m	14' 4" x 13' 4"
Bedroom 4	4.1m x 3.3m	13' 4" x 10' 8"
Bathroom	3.1m x 3m	10' 1" x 9' 8"
Total area:	321 sq m	3454 sq ft



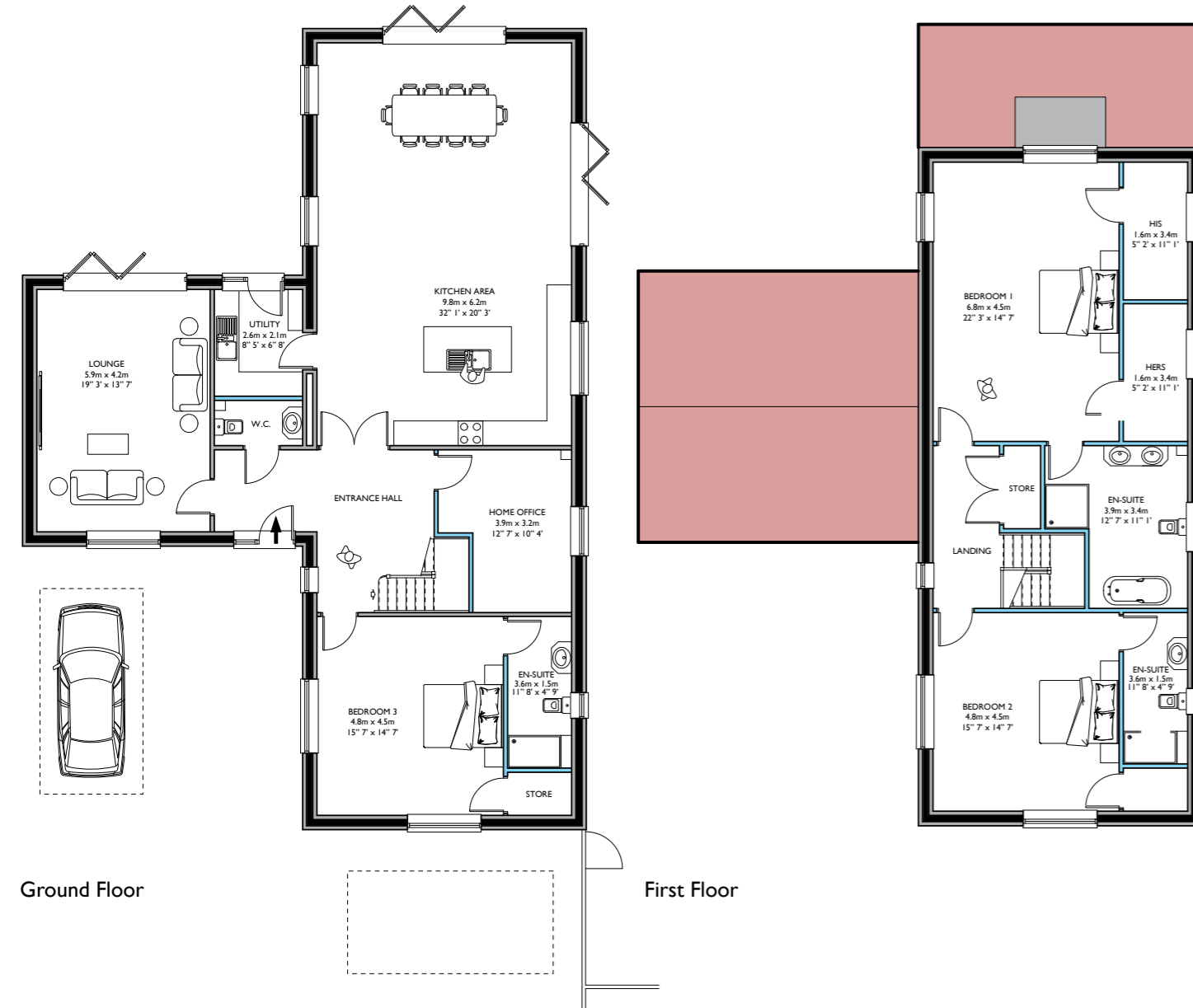
Ground Floor



First Floor

*Approx measurements, floor plans can be subject to change.

Plot 3 - Floor Plan



Ground Floor			
Lounge	5.9m x 4.2m	19' 3" x 13' 7"	
Kitchen Area	9.8m x 6.2m	32' 1" x 20' 3"	
Utility	2.6m x 2.1m	8' 5" x 6' 8"	
Home Office	3.9m x 3.2m	12' 7" x 10' 4"	
Bedroom 3	4.8m x 4.5m	15' 7" x 14' 7"	
En-Suite	3.6m x 1.5m	11' 8" x 4' 9"	
First Floor			
Bedroom 1	6.8m x 4.5m	22' 3" x 14' 7"	
His	1.6m x 3.4m	5' 2" x 11' 1"	
Hers	1.6m x 3.4m	5' 2" x 11' 1"	
En-Suite	3.9m x 3.4m	12' 7" x 11' 1"	
Bedroom 2	4.8m x 4.5m	15' 7" x 14' 7"	
En-Suite	3.6m x 1.5m	11' 8" x 4' 9"	
Total area:	255 sq m	2744 sq ft	

Ground Floor

First Floor

Plot 9 - Floor Plan



Ground Floor			
Lounge	5.9m x 4.7m	19' 3" x 15' 4"	
Family Room	3m x 2.7m	9' 8" x 8' 8"	
Utility	3.8m x 2.1m	12' 4" x 6' 8"	
Home Office	5.4m x 2.8m	17' 7" x 9' 1"	
Kitchen Area	9m x 5.4m	29' 5" x 17' 7"	
Garage	6m x 4.5m	19' 6" x 14' 7"	
First Floor			
Bedroom 1	5.9m x 4.7m	19' 3" x 15' 4"	
His	1.7m x 2.3m	5' 5" x 7' 8"	
Hers	1.7m x 2.3m	5' 5" x 7' 8"	
En-Suite	2.7m x 2.5m	8' 8" x 8' 2"	
Bedroom 2	6m x 2.8m	19' 6" x 9' 1"	
Bedroom 2	4.5m x 2.7m	14' 7" x 8' 8"	
Bedroom 2	5.6m x 4.8m	18' 3" x 15' 7"	
En-Suite	2.2m x 1.9m	7' 2" x 6' 2"	
Total area:	257 sq m	2765 sq ft	

First Floor

Ground Floor

Internal Specification

- Under Floor Heating to Ground & First floor
- Schmidt Designer Kitchen (Master Range - Colour Choice subject to build stage)
- Bosch Integrated Appliances to feature Dishwasher - Double Ovens (Where specified)
- Full Height Fridge and Full Height Freezer
- Induction Hob
- Extractor
- Wine Display Fridge
- Quartz Worktops (Colour Choice subject to build stage on upstands and Splashback)
- Luxury Vinyl Flooring (Herringbone Pattern - Colour Choice subject to build stage)

External Specification

- Carport (Double where specified)
 - Block Paved Driveway
 - EV Charger
 - External Tap
 - Power Points
 - Porcelain Tiled Patio Areas
- Heating:
- Air Source Heat Pump (Samsung)



*Specification can be subject to change. Images shown are from a previous development.



For further details please contact:

Ashtons Land & New Homes

01462 453195

newhomes@ashtons.co.uk

ashtons.co.uk/land-and-new-homes

32 Bridge Street, Hitchin,

Hertfordshire SG5 2DF




Queen's wood
HOMES

 **ashtons**
land & new homes

Artist's perspectives, plans and diagrams used in this brochure are intended to be a general guide to the appearance of the development. Internal images are from a previous development, to show typical finish & specification. The measurements are approximate and should not be relied on and should only be used to give guidance. From time to time, it is necessary for us to make architectural changes therefore prospective purchasers should check the latest plans with our sales representative. We reserve the right to vary the specification as and when it may become necessary. Whilst all statements contained in the brochure are believed to be correct, they are not to be regarded as statements or representations of fact and neither the Agent or the Developer guarantee their accuracy. The statements are not intended to form any part of an offer or a contract.