

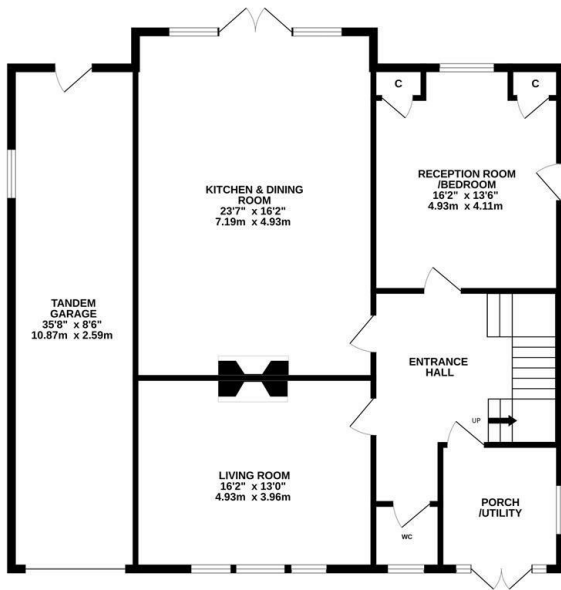


Priory Avenue, Hastings TN34 1UL  
Offers in excess of £750,000

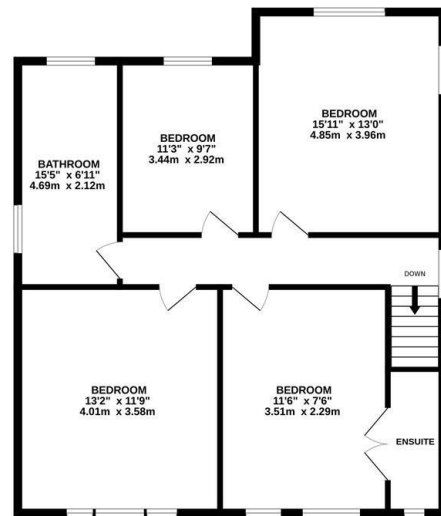
 4  2  2  D

An attractive four bedroom DETACHED 1930'S FAMILY HOME situated in an enviable setting within immediate reach of Alexandra Park, Linton Gardens and a leisurely walk from the beach and Hastings Town centre which benefits from a mainline railway station with connections to London. The accommodation has UNDERGONE EXTENSIVE RESTORATION and is presented in immaculate condition throughout, retaining a WEALTH OF ORIGINAL ART DECO FEATURES. You enter in to a spacious porch which in turn opens into a WELCOMING ENTRANCE HALLWAY with a downstairs cloakroom, there is a well proportioned living room which enjoys a bright Southerly aspect and an IMPRESSIVE, OPEN PLAN KITCHEN AND DINING SPACE which measures 23'7 x 16'2 boasting Crittall style doors at the rear opening to the landscaped garden. This sociable space is fitted with stylish kitchen units complete with integrated appliances, there is a central island/breakfast bar and ample room for a full dining table creating the perfect environment to entertain and acting as the HUB OF THE FAMILY HOME. There is also a second reception room on the ground

GROUND FLOOR  
1304 sq.ft. (121.1 sq.m.) approx.



1ST FLOOR  
934 sq.ft. (86.8 sq.m.) approx.



TOTAL FLOOR AREA: 2238 sq.ft. (207.9 sq.m.) approx.

Whilst every attempt has been made to ensure the accuracy of the floorplan contained here, measurements of doors, windows, rooms and any other items are approximate and no responsibility is taken for any error, omission or mis-statement. This plan is for illustrative purposes only and should be used as such by any prospective purchaser. The services, systems and appliances shown have not been tested and no guarantee as to their operability or efficiency can be given.

Made with Metropix ©2025

