



Lewin Road, SW16

£475,000

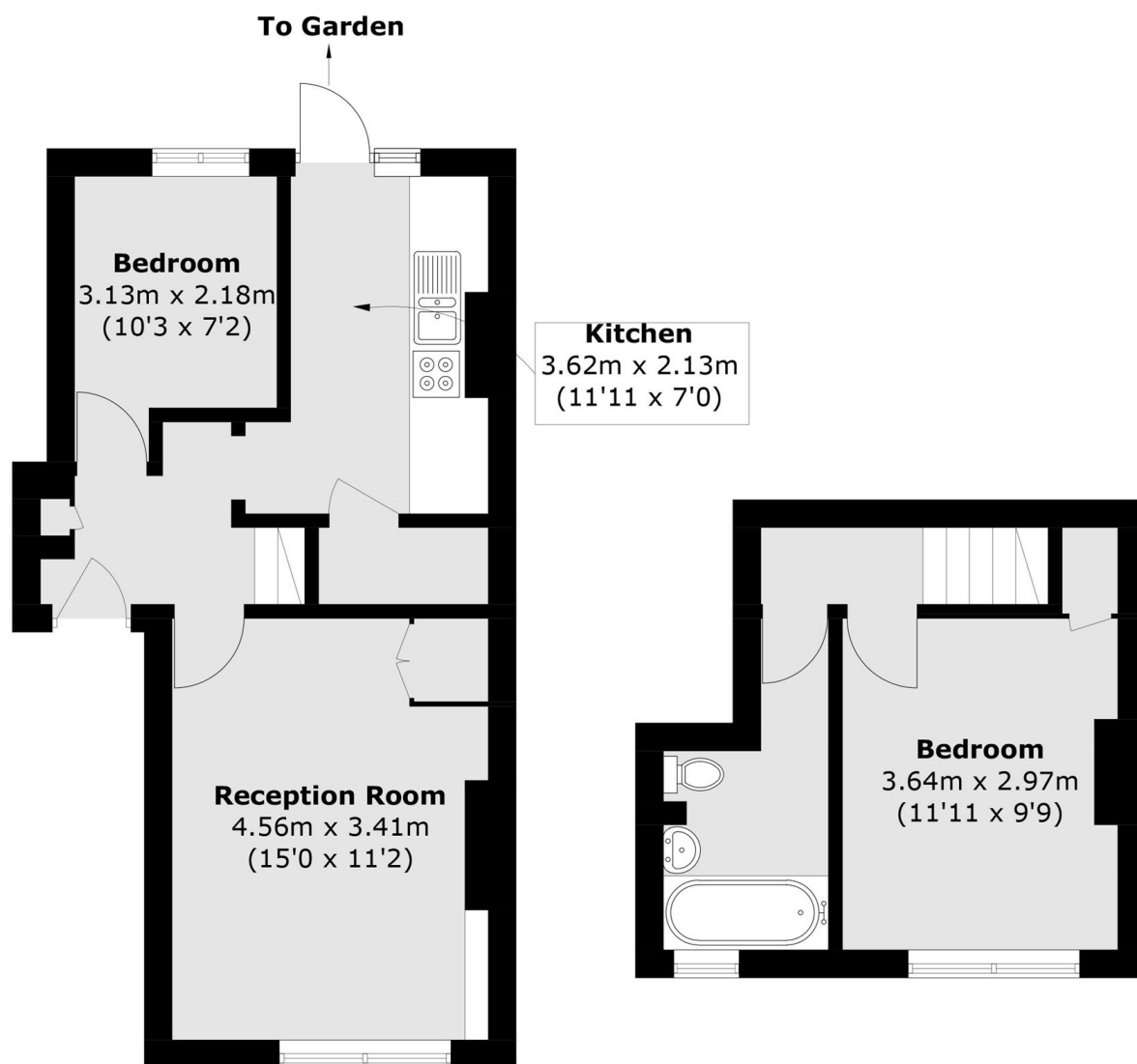
Spread over two floors is this two bedroom, share of freehold, garden flat. This property has a front facing reception with high ceilings and fitted shelves, the rear separate kitchen leads through to the large private garden with decked area. There is a bedroom on the ground floor which can be used as a study if required. The double bedroom on the first floor has lots of natural light and is next door to the family bathroom. This home is also being offered with no onward chain.

Located on a prime residential street off Streatham Common, the property enjoys easy access to excellent transport links providing direct connections into The City and the West End. The open green spaces of Streatham Common and a range of local cafés, shops, and amenities are all within easy reach.

Features

- Two Bedrooms
- Private Garden
- Chain Free
- Prime Location
- Separate Garden
- Share of Freehold

Lewin Road, LONDON, SW16



Ground Floor

First Floor

Total area (approx.): 57.1 sq. m (614.5 sq. ft)