



## GROUP 3

31 Draycott Avenue | | LONDON | SW3 3BS

£2,581 Per month

**ESON2**  
REAL ESTATE

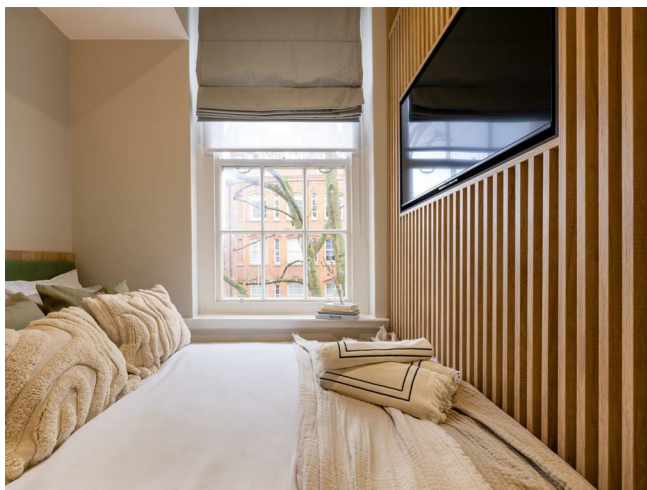
## Key features

- Open-Plan Living
- High-End Kitchen
- Luxurious Bathroom
- Smart Design
- On-site Gym
- Workspace Facilities
- 24/7 Security

## Description

A newly renovated studio in Chelsea SW3 featuring a sleek, space-efficient layout, modern kitchen with premium appliances, and stylish bathroom. Includes built-in storage, dining and study areas, 24/7 gym access, co-working spaces, secure entry, and CCTV. Prime location near King's Road, Knightsbridge, and luxury shopping—ideal for professionals or students.

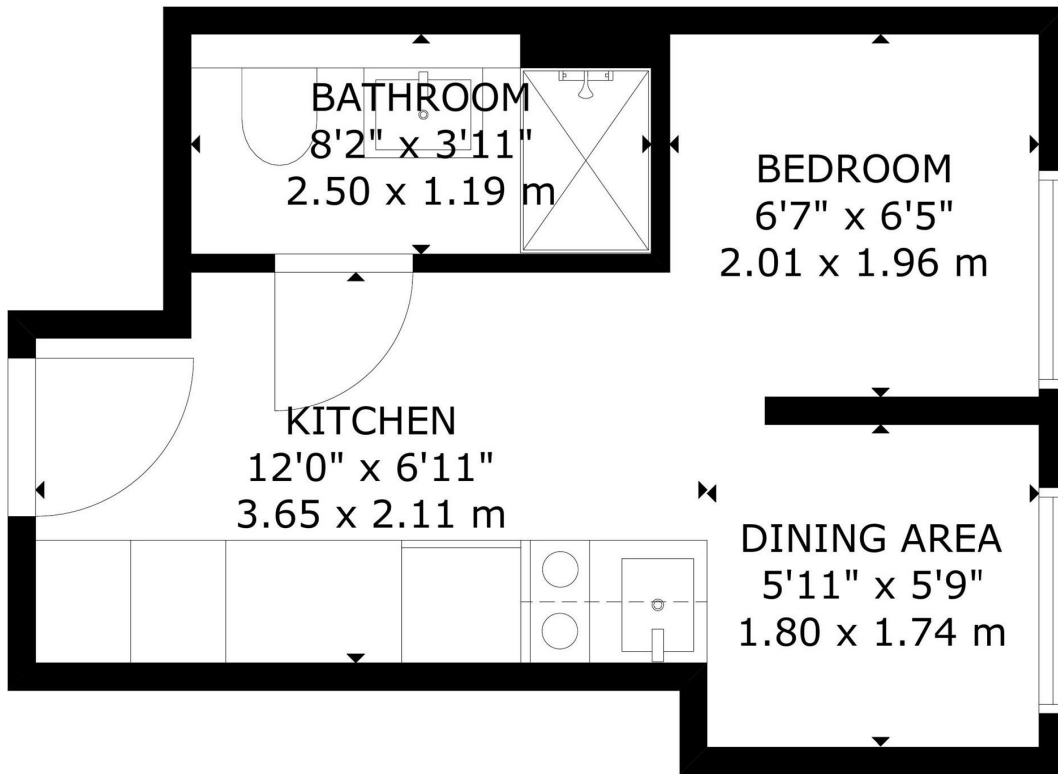
## Directions



A bright, newly refurbished studio in Chelsea SW3, combining contemporary design with practical, city-ready living. The open-plan layout maximises natural light, with a large window by the bed creating a welcoming and airy space.

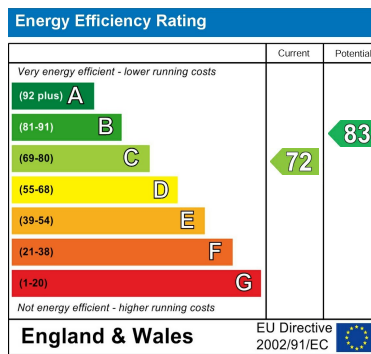


Floor plans



GROSS INTERNAL AREA  
TOTAL: 18 m<sup>2</sup>/193 sq ft  
THIRD FLOOR: 18 m<sup>2</sup>/193 sq ft  
SIZE AND DIMENSIONS ARE APPROXIMATE, ACTUAL MAY VARY

THIRD FLOOR



Council Tax Band      EPC Rating C



301 Michelin House 81 Fulham road  
London  
Greater London  
SW3 6RD  
07920 257649  
fayeel@eson2.co.uk  
www.eson2.co.uk