



2 Ash View, Ashton-Under-Lyne, OL6 8JW

£875

A Wilson Estates are delighted to offer To Let this two bedroom terrace on Ash View in Ashton.

Located in a popular residential area, close to schools, transport links and town centre amenities. The property briefly comprises two bedrooms, lounge, kitchen and fitted three piece bathroom suite. Early viewing is recommended.

2 Ash View

, Ashton-Under-Lyne, OL6 8JW

£875



Lounge

Composite double glazed door and uPVC double glazed window to front elevation. Fireplace with surround. Lighting, radiator, carpet, and blinds.

Kitchen

uPVC double glazed window and composite door to rear elevation. Fitted wall and base units with coordinating work surfaces. Stainless steel single sink unit with mixer tap. Integrated electric oven and gas hob with extractor over. Part tiled walls, lighting, radiator, and vinyl flooring.

Stairs and Landing

Wooden bannister and balustrades. Lighting, radiator, and carpet.

Bathroom

uPVC double glazed window to rear. Three piece bathroom suite comprising low-level WC, hand wash, and panelled bath with mains fed shower over. Part tiled walls, lighting, radiator, vinyl flooring, and built in storage cupboard.

Bedroom One (double)

uPVC double glazed window to front elevation. Lighting, radiator, and carpet.

Bedroom Two

uPVC double glazed window to rear elevation. Lighting, radiator, carpet, and built in storage cupboard.

Externally

Garden to the front with laid to lawn. To the rear is an enclosed yard with out building storage.

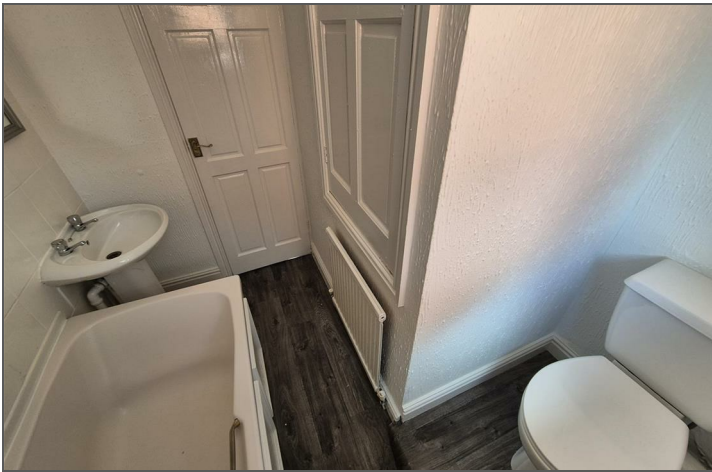
Additional Information

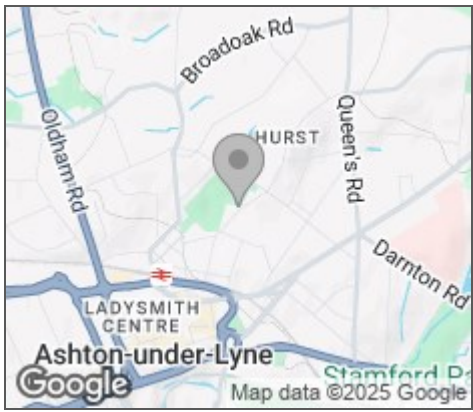
Council Tax Band : A

EPC Rating : D

Holding Deposit : £201

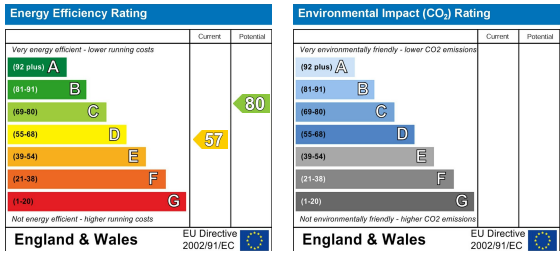
STRICTLY NO PETS AND SMOKING POLICIES





Viewing

Please contact our A Wilson Estates Ltd Office on 0161 303 0778 if you wish to arrange a viewing appointment for this property or require further information.



These particulars, whilst believed to be accurate are set out as a general outline only for guidance and do not constitute any part of an offer or contract. Intending purchasers should not rely on them as statements of representation of fact, but must satisfy themselves by inspection or otherwise as to their accuracy. No person in this firms employment has the authority to make or give any representation or warranty in respect of the property.